



JUNE 2008 PROGRAMS

JUNE 1 "INTO THE HILLS"

Reverend Michael Nelson reflects, "Over 250 million years ago Kansas was covered by a succession of big seas. The underlying land has eroded into what we know as the Flint Hills. The largest expanse of tall grass prairie in North America provides one of the best grazing/gazing lands in the world. This sea still summons with its waves of bluestem; a sense of infinity." Contact *Michael* at (913) 961-2626 or minister@uufm.net

JUNE 8 "PUTTING THE GLOBAL FOOD CRISIS IN CONTEXT"

Stan Cox, senior research scientist at the Land Institute in Salina, is the author of a newly published book, *Sick Planet: Corporate Food and Medicine* (read excerpt on page 7). Stan shares findings which he believes demonstrate that the global food crisis is due predominately to the way the US model of corporate, industrialized agriculture has been extended to the rest of the world, most prominently via the recent focus on biofuels. Contact/convener is *John Exdell* at 539-6076 or jbx@ksu.edu

JUNE 15 "A VIEW OF LGBT LIFE WEST OF 135"

Anne Mitchell, raised in Berkeley, California, and a graduate of Smith College, has lived for years in Comanche County, Kansas, on a ranch with her partner. As a social worker she often works with LGBT people. She will share some of her insights. Contact/convener is *Michael Nelson* at (913) 961-2626 or minister@uufm.net

JUNE 22 "VINCENT VAN GOGH: SPIRITUAL AND ARTISTIC JOURNEY"

Fellowship member Dick Beeman reads selections from the letters of Vincent van Gogh, revealing a complex, fascinating man and artist, hidden behind the popular caricature of the mad dauber. Dick will be joined by Tom Phillips and Dan Swenson, portraying, respectively, Vincent's friend and fellow artist Anton von Rappard, and his brother Theo. Contact *Dick* at 539-9369 or rbeeman@cox.net

JUNE 29 "THE CALL OF THE WIND PEOPLE"

Reverend Michael Nelson considers, "Kansas, named after the Kansa people, pays little tribute to this tribe whose land we live on. Who were they? Who are they? How do we honor them today?" Contact *Michael* at (913) 961-2626 or minister@uufm.net

UU FELLOWSHIP OF MANHATTAN
PO Box 910
Manhattan, KS 66505

UUFM OFFICE: (785) 537-2349

www.uufm.net

REV MICHAEL NELSON, minister
(913) 961-2626
minister@uufm.net

ELKE LORENZ, Executive Board Chair
(785) 539-3527
ellorenz@uufm.net

SUNDAY SERVICES

begin at **10:45 AM**

at the Fellowship building

located at **481 ZEANDALE ROAD**

INSIDE THIS ISSUE	PAGE
Michael's Musings	2
Minister's Schedule	2
New Prairie Star Family Camp	2
RE / Youth Activities	3
Activities and Events	4
Social Action	5
Volunteer Opportunities	5
Words from Our Chair	6
Board meetings	6
Excerpt from Stan Cox	7
Administrator's Schedule	8
Sunday Coffee Providers	8
Member Info / Subscriptions	8
June Calendar	9

New Member PICNIC !!!

On Thursday, **JUNE 19**, at 6 pm, our Social and Membership Committees and Michael Nelson will host a Picnic for anyone who has joined the Fellowship in the past three years. New members are asked to RSVP after receiving their invitation in the mail. Bring the whole family. A sitter will be available after the picnic, to allow time for a brief discussion. Contact Mary Westfall at 539-5397 or westyks@interkan.net, or Cathy Hedge at 537-1101 or cathyhedge@usd475.org to learn more.



**UUFM is a
WELCOMING CONGREGATION**

Learn more about the Welcoming Congregation initiative
at www.uua.org/visitors/justicediversity/6252.shtml

MICHAEL'S MUSINGS - REV MICHAEL NELSON, MAY 21, 2008

Dedicated to Doreen Shanteau --



On a recent visit with Evelyn Frazier, we talked about many things. I knew the best in her was alive when she quoted Emily Dickinson with zest. I sought the poem she quoted among the 1,789 Dickinson wrote. As I searched, I found myself lolling and

plunging and rising in Emily's universe. I could not find the poem Evelyn recited, but I found many that spoke directly to me with the "... internal difference--/ Where the Meanings, are--/ None may teach it--Any--/ 'Tis the Seal Despair--/ An imperial affliction/ Sent us of the air--/ When it comes, the Landscape listens--/ Shadows--hold their breath--/ When it goes, 'tis like the Distance/ On the look of Death--/.

I do not wish for my father to be alive. It was, as the saying goes, his time to go. With this, I have no argument, but since his death I find myself wanting him to know about the first indigo bunting I have ever seen come to the feeder; the plains wild indigo, a yellow pea that shines like a beacon on the prairie as dusk gathers drawing me into the light of beauty; that the eastern phoebe has rebuilt her nest by the garage door--the three chicks staring at me silently; how well the potatoes are growing ...

Dickinson's poetry often features birds, butterflies, bumblebees ... Details from the natural world abound in her verse. My dad found sustaining and renewing pleasure in nature. When despair over his death takes hold I go to the garden, the woods, the fields, the creek ... Now when the coyotes howl before nightfall, the owls call, the indigo bunting arrives, there are no layers of indifference to penetrate. I know "the Distance" without remove. Dad would have loved to see the fox and her kits at the wood's edge gambol, the red-brown fur and black noses in all that shimmer of bright green. There are moments as if I were seeing him incarnated.

While I do not summon grief, I do not shun it. In Coomaramamy's essay on the aesthetics of Buddhism he wrote about "Samvega," a Pali word that "denotes the shock or wonder that may be felt when the perception of a work of art becomes a serious experience." There are

moments when watching the birds pecking seed becomes a source of the living truth. Emily's poems bridge what can't be bridged. Holding a newborn child, the hand of someone dying, a grieving mother who now needs to find her way into a new life lets me know something about the art of living--how we live with what is here and what is not.

The indigo bunting has just landed on the deck. What a fine fellow ... *Michael*

Michael Nelson's Schedule

In June, Michael will be available in the Fellowship office on:

Monday,	June 2 -	2 to 4 pm
Tuesday,	June 3 -	11 am to 1 pm
Wednesday,	June 11 -	3 to 5 pm
Thursday,	June 12 -	4 to 7 pm
Tuesday,	June 17 -	11 am to 1 pm
Thursday,	June 19 -	4 to 6 pm
Thursday,	June 26 -	2 to 4 pm
Monday,	June 30 -	2 to 4 pm

During office hours, call Michael at the Fellowship at 537-2349. Meetings may be arranged at times other than posted office hours. Contact Michael at (913) 961-2626 or minister@uufm.net to make arrangements.

Camp StarTrail

As you may have heard, plans are being made to start a new, week long, multi-generational UU camp in August 2009. The planning group includes UUs from Nebraska, Kansas, and Missouri. We will be renting a camp in the Platte River Valley between Omaha and Lincoln, Nebraska. Activities include hiking, canoeing, celebration services in the mornings and vespers in the evening, excursions to area attractions such as the Henry Doorly Zoo in Omaha, and some of the best food we've ever tasted at any camp.

We'll be meeting at the camp August 8 thru 10, 2008, to continue the planning process. We're looking for UUs who have ideas and energy in areas such as music and the arts, programming for children and youth, finance, promotion, and more, and hope you, or someone from your congregation, will join us!

Information and registration forms are available at www.psdoua.org/Camps/CampStarTrail To learn more, contact Nancy Heege, Prairie Star District Executive, at nheege@psdoua.org, or Rev. Phillip Lund, Lifespan Program Director, at plund@psdoua.org

UU WORLD TRAVELERS ...

An exciting itinerary awaits students in June !!!

- JUNE 1 - BON VOYAGE PARTY**
- JUNE 8 - A TRIP DOWN MEMORY LANE**, with Charley Kempthorne
- JUNE 15 - CALIFORNIA**, with Sandy Nelson
- JUNE 22 - TBA** ask Sandy Nelson if you'd like to guide a tour
- JUNE 29 - FLYING KITES AROUND THE WORLD**, with Jay Ham



Once again we are combining classes over the summer for the always popular "UNITARIAN UNIVERSALIST WORLD TRAVELERS," with a special twist to address the need for nurturing a UU identity in our youth. Our spectacular Bon Voyage party will be the first Sunday in June. Students then "tour" a different UU related "location" each Sunday throughout the summer. With the help of "tour guides" the children learn about that location's culture, religions, and UU history; and engage in related activities.

Our plans include "trips" to Transylvania; Boston; Walden Pond; Monticello; the home of John and Abigail Adams; Berkeley, California; and more. **WE NEED YOU** to help lead us on a virtual tour of these special places. It's easy! We have materials to walk you through an entire presentation. Tour guides never go solo. They always have at least one other teacher on the trip. If you'd like to join in the fun one Sunday morning this summer, contact RE Committee chair Sandy Nelson at 341-0135 or sandralounelson@yahoo.com.

YOUTH CHOIR

The UUFM Youth Choir, directed by Sarah Nuss-Warren and Kris Cervantes, rehearses before the morning service on the first and third Sundays of each month, from 10:15 to 10:40 am, in the old sanctuary. In June, the choir will rehearse only once on Sunday **JUNE 15**, at 10:15 am. All kids and youth are invited to join in our song. Contact Sarah at 537-3586 or nusswarr@gmail.com to learn more.



Finger painting by Isabel

HIRING A DRE

At the May Executive Board meeting, discussion focused on the congregation's vote to hire a Director of Religious Education (DRE). The Board has appointed a task force, which will develop a job description. At the July Board meeting, five members will be appointed to a DRE Search Committee, with the expectation that a DRE will be hired by early October 2008. Anyone can nominate themselves or someone else by putting their name and a short explanation of why they are being nominated in the Chair's mailbox above the coat rack at the Fellowship, or by emailing Elke Lorenz at ellorenz@uufm.net, or Eric Banner at banner.eric@gmail.com. Nominations will be accepted until July 1.

STUDENT ART

Over the past several weeks, Fellowship members, friends, and visitors have been treated to a colorful and ever-changing exhibit of art work, created by our own RE students. Take a stroll down the hallway in front of the RE rooms to view the current, vivid display of student artwork.

JUNE ACTIVITIES AND EVENTS

The **MEN'S LUNCH** meets EVERY WEDNESDAY, at 12 noon, in the old sanctuary. Bring a desire for stimulating conversation and a sack lunch for yourself. Contact Jack Warren at 539-4073 or jomega@ksu.edu, or Charley Kempthorne at 564-1118 or charley@thelifestoryinstitute.com

MEDITATION practice meets in the new sanctuary on the first and third Thursday of each month. This month, sessions will be held on Thursday, JUNE 5, from 5:30 to 6:30 pm, and on JUNE 19, from 5:30 to 6 pm. Learn more from Jay Ham at 539-5118 or jm.3554@gmail.com

The **ADULT DISCUSSION** forum meets on Sunday, JUNE 8 and JUNE 22, at 9:30 am, in the large RE room. All are welcome to join in this varied discussion. Contact Jim Bascom at 537-1132 or jfbascom@sbcglobal.net for more information.

The **EAT 'N' WRITE** memoir-writing workshop meets Monday, JUNE 9, and JUNE 23, at 11:30 am in the old sanctuary. Bring your lunch and your writing tools! Learn more from Barbara Bascom at 537-1132 or bbbascom@sbcglobal.net

The **WOMEN'S LUNCH GROUP** meets Wednesday, JUNE 11, at 12 noon, at Happy Valley Restaurant, 1120 Laramie Street, in Manhattan's Aggieville. All interested Fellowship women and their guests are invited. Contact Florence Schwab at 539-0976 or fschwab@cox.net, to learn more.

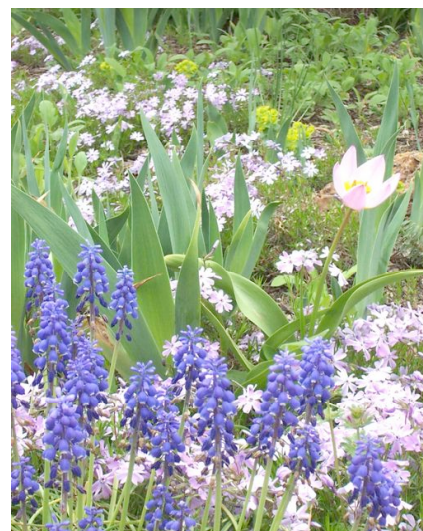
The **UU DRUM CIRCLE** meets on Friday, JUNE 13, at 7 pm, around the fire pit given dry weather. All members, friends, and guests of all ages are invited to drum with us around the fire pit or in the main sanctuary given rainy weather. We've enjoyed honoring special instruments people brought the last couple times and would do it again for those who couldn't make it or if other instruments needed honoring. Plenty of instruments are provided for drumming. Learn more from Pat Embers at 539-2819 or embers1@cox.net

On Thursday, JUNE 19, at 6 pm, our Social and Membership Committees and Michael Nelson will host a **NEW MEMBER PICNIC** for anyone who has joined the Fellowship in the past three years. New members are asked to RSVP after receiving their invitation in the mail. Bring the whole family. A sitter will be provided after the picnic, to allow time for a brief discussion. Contact Mary Westfall at 539-5397 or westyks@interkan.net, or Cathy Hedge at 537-1101 or cathyhedge@usd475.org to learn more.

Join us for a **CIRCLE DINNER** on Saturday, JUNE 28. Members and friends choose to be guests or hosts. Small groups attend dinner at a host's home. Guests will bring an assigned dish to share. Contact Enell Foerster at 537-0977 or foer@ksu.edu to sign up, or for more information.

COUNCIL OF COMMITTEES

The Council of Committees will meet in the Fellowship's old sanctuary on Tuesday, June 17. All continuing and new committee and task force chairs are encouraged to attend this orientation event, as we discuss our hopes for the coming Fellowship year, and begin to form a cooperative working group. Contact Chair-elect Dale Askey at 537-1272 or dsa06513@gmail.com, or Executive Board Chair Elke Lorenz at 539-3527 or ellorenz@uufm.net to learn more.



FELLOWSHIP GROUNDS

The plantings around the Fellowship have been gloriously blooming throughout the spring. Members and friends are encouraged to stroll the grounds to view the new flowers as they bloom and fade with the season. The dedicated efforts of our Grounds Committee and volunteers at our regularly scheduled workdays are evident in the beautifully tended gardens around the building.

UUFM Social Action

VOLUNTEER AND SOCIAL ACTION OPPORTUNITIES

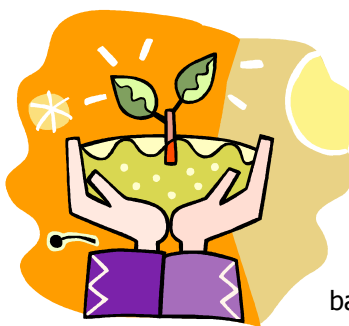
This month, Fellowship volunteers will prepare and serve **HAPPY KITCHEN COMMUNITY BREAKFASTS** on Friday, JUNE 13, JUNE 27, and MAY 30, at St Paul's Episcopal Church. **VOLUNTEERS ARE NEEDED.** The meal is free and all are invited to join us for good food and fellowship. Of course, donations are welcome. Contact Anne Marchin at 539-3026 or annemarchin22@hotmail.com

Fellowship volunteers periodically deliver government food commodities to individuals unable to pick them up from **FLINT-HILLS BREADBASKET**. If you can share two hours of your time during an upcoming delivery, it would make a world of difference to someone. For more information, contact Terri Franz at 537-2291 or terrijfranz@sbcglobal.net

GREETERS share a smile as folks arrive on Sunday morning, encourage visitors to sign our guest book, answer questions, and help to create a warm and welcoming atmosphere at UUFM. Contact Welcoming Committee co-chairs Mary Westfall at 539-5397 or westyks@hotmail.com, or Cathy Hedge at 537-1101 or cjhedgewriter@yahoo.ca

Could you share your travel adventures with our youth this summer? Volunteer **"TOUR GUIDES"** are being scheduled for this summer's RE curriculum, "UU World Travelers." The theme of the tours this year will be Unitarian and Universalist destinations. This is a one-morning commitment, and our RE teachers have lots of help and guidance to offer. Contact Sandy Nelson at 341-0135 or sandralounelson@yahoo.com

The Manhattan Alliance for Peace and Justice (MAPJ) continues weekly **ANTI-WAR DEMONSTRATIONS** on Wednesday afternoons, from 4:30 to 5:30 pm, in Triangle Park, at the corner of Bluemont and Manhattan Avenue, in Aggieville. Please contact Anne Cowan at 537-2025 or anne_cowan@sbcglobal.net to learn more.



HELPING HANDS SUNDAY

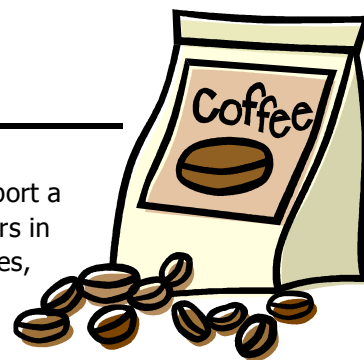
On JUNE 8, our Helping Hands Sunday beneficiary will be the **ENVIRONMENTAL DEFENSE FUND**, a US-based nonprofit environmental advocacy group, known for its work on issues including global warming, ecosystem restoration, oceans, and human health. It is non-partisan, and its work often advocates market-based solutions to environmental problems. Learn more at www.edf.org

All cash contributions and checks placed in the offering basket on the second Sunday of the month will go to the Helping Hands Sunday beneficiary, unless otherwise indicated. Write "UUFM" on the memo line of your check to indicate contributions NOT intended for the beneficiary. All checks should be made out to UUFM.

On Sunday, May 11, we raised \$618 as we passed the plate in support of Wonder Workshop's summer programs. The Social Action Committee thanks members and friends for your generous contributions!!! To learn more, contact our Social Action Committee chair Pat Weisenburger at 539-4711 or patw@ksu.edu

EQUAL EXCHANGE COFFEE

Equal Exchange products directly support a better life for farmers and farm workers in the developing world through fair prices, community development, and environmental stewardship. Through Fair Trade, small farmer organizations market their own harvests through direct, long-term contracts with inter-national buyers, learn how to manage their businesses and compete in the global marketplace.



Fair Trade products are offered for purchase at the Fellowship following Sunday programs. Regular, decaf, whole bean, and ground coffees, as well as chocolate, and tea are available. Special orders can be taken. To learn more about Fair Trade certification, or to purchase Fair Trade products, contact Anne Cowan at 537-2025 or anne_cowan@sbcglobal.net or ask her on Sunday mornings. More information is available at www.equalexchange.com

WORDS FROM OUR CHAIR

Dear Fellowship Members and Friends,



Thank you for your confidence in me to be the Executive Board Chair this year. Ultimately Michael Oldfather is responsible for this because he asked me to fill a vacant position on the Board back in July 2005. This is why

Michael Nelson and Eric Banner asked me in March 2007 to be Chair-elect. Therefore, any complaints about my performance or lack thereof should be directed to Michael Oldfather! I am honored to be the Chair this year and look forward to working with all members of the congregation in a positive and congenial manner. So many members of the fellowship are taking on leadership roles. Without their dedication the fellowship would not be able to function.

What helped me the most to prepare for my new role were the examples set by Michael Oldfather and Eric Banner as Chairs. I was able to observe their selfless work for the Fellowship not only during Board meetings, but also on committees and during interaction with many Fellowship members. I am a bit concerned to be a relatively new member and hope to have the trust of our long-time members to whom we owe the current excellent state of the Fellowship. My own leadership philosophy is that everybody can and should be a leader from the position in which they find themselves. The synergy from leading by example in our conduct with others can be enormous.

As of June 2008, Board meetings will be held on the second Thursday of each month. Thus, this month's meeting will be on June 12, from 7 to 8:30 pm, in the old sanctuary. As in the past, all Fellowship members are welcome to attend. On Saturday, June 14, the Board will have its annual retreat to outline the plans for the year. Michael Nelson and I are working on our visions at this time and will receive input from the other Board members during the retreat as well. As you already know, much of our energy will be spent in the search for a Director of Religious Education (DRE). The DRE will enhance an already excellent RE program for our children and lighten the burden for planning for RE for our RE teachers. We can only sustain a DRE if we meet our pledge goals and are attractive to young families. Therefore, I believe that outreach to the commun-

ity will be very important in fulfilling our mission and vision in the coming year(s).

Member-at-large Terrie Beccera (formerly Terrie Clark) resigned her Board position effective June 1. She is very busy writing a dissertation. We thank Terrie for her service to the Fellowship and hope that she will be able to resume her work for us after the completion of her dissertation. The Board will vote on a new member-at-large during the June Board meeting to finish Terrie Beccera's term that would have ended on May 31, 2009. A long-time member of the fellowship has expressed willingness to serve.

The most inspirational event of the month of May for me was hearing the Rev. Bill Sinkford, President of the UUA, speak at Lawrence High School on May 18th. He talked about reaching out to other organizations and working together with them to help better our world. He spoke about working with other churches on issues that unite us, and not focusing so much on viewpoints that divide us. Just like the recent public service of the newly founded Hutchinson UU Fellowship, the visit of William Sinkford turned into a major SCORE event and was attended by members from several Kansas UU Fellowships. It has been a great pleasure to meet UUs from across the region. Chair-elect Dale Askey will serve on the SCORE Board this year. He also will lead a Council of Committees meeting on Tuesday, June 17. All committees are asked to meet prior to June 17 so they can share their plans for the year with each other.

Looking forward to a wonderful year,

Elke Lorenz

UUFM Executive Board Chair

Contact Elke at 539-3527 or ellorenz@uufm.net

EXECUTIVE BOARD

The Executive Board will meet on Thursday, JUNE 12, at 7 pm in the old sanctuary. Members and friends of the Fellowship are always welcome and encouraged to attend. For more information, contact Executive Board Chair Elke Lorenz at 539-3527 or ellorenz@uufm.net

Officers gather for the Board's annual planning retreat on Saturday, June 14, at 11 am.

AN EXCERPT FROM ...

SICK PLANET: CORPORATE FOOD AND MEDICINE

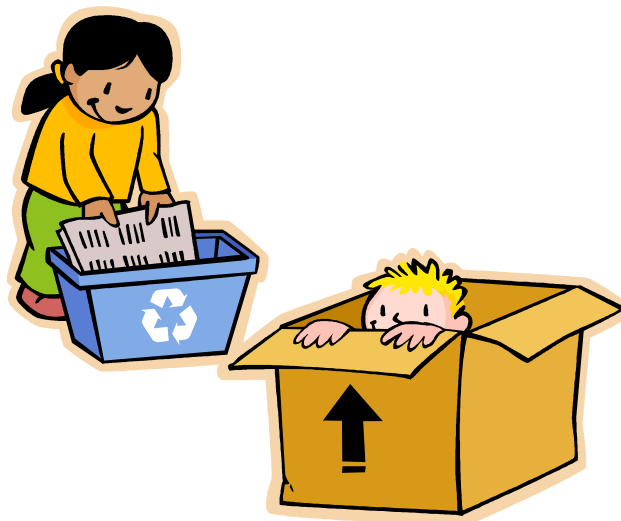
BY STAN COX

Farming ... is inevitably bound by the calendar--by month-to-month variation in the capacity of soil and sunlight to produce new plant tissue. It depends fundamentally on the productivity and the habits of non-human biological organisms over which humans can exert control only up to a point. Land, machinery, and workers all are forced into idleness for extended periods punctuated by times of frenzied activity. That clearly isn't the ideal pattern for efficient wealth generation, so the past century has seen relentless efforts to mold agriculture into the factory model as closely as possible and, where that can't be done, to graft more easily regimented industries onto an agricultural rootstock.

... The processing of raw agricultural products into food--what the government classifies as food "manufacturing"--has grown twice as fast as agriculture, and food service has grown almost four times as fast, much of that growth attributable to American's increasing tendency to eat out.

And the growth that has been achieved by the economy's agricultural sector has also gone, for the most part, to support industries whose output isn't physically bound to sunlight and the seasons ... The share of total farm output that goes to pay for industrial inputs--machinery, fertilizers, chemicals, etc.--has shot up from 30 percent of the average farm's total production in the 1940s to 50 percent today, while the share going to the farmers who raise the actual crops and animals has shrunk to less than half of what it once was.

Stan, a long time Fellowship friend, will present the Sunday morning service on June 8 entitled "Putting the Global Food Crisis in Context." To learn more about his recently published book--*Sick Planet: Corporate Food and Medicine*, published by Pluto Press, London, distributed by University of Michigan Press--and to read more writings by Stan, visit www.sickplanetbook.com



FELLOWSHIP GARAGE SALE *BIG SUCCESS!!!*

Shirley Hobrock, our out-going Social Committee chair, and organizer extraordinaire of our UUFM Garage Sale fundraising events, shares this report on the Fellowship's most recent garage sale held on April 25 and 26, 2008:

"Over \$1,600 was raised!!! It seems like it has been a long time since the garage sale but I would like to give a few words of thanks to all who participated and gave your precious belongings to such a good cause. A big thank you to Gwen Geiselman who furnished her garage and Barbara Hacker who worked many hours on the scene. We couldn't do this event without our guys who haul our tables and large items on the trucks. Thanks to Brice my sidekick who does whatever I ask of him for the sale."

It should also be noted that Shirley herself puts in hours upon hours each year to help make the garage sale happen. She ended her task this year by delivering unsold bedding and jackets to the Manhattan Head Start program. Thank you, Shirley!!!



SUNDAY COFFEE PROVIDERS

- June 1: Sandy Nelson / RE students
- June 8: Chelsey and Jessie Freyermuth
- June 15: Charley and June Kempthorne
- June 22: K Swenson / *volunteer needed*
- June 29: *POTLUCK refreshments*

THANKYOU to our refreshment providers! Volunteers make coffee, serve a simple snack, and clean up afterwards. A sign up is posted on the bulletin board in the kitchen. At least two volunteers are scheduled each Sunday. To learn more, contact Betty Banner at 776-1887 or bettybanner@gmail.com, or Gwen Geiselman at 776-4505.

Administrator's Schedule

In June, Susan Turner will be available in the Fellowship office on:

- Monday, June 2 - 3 to 5 pm
- Tuesday, June 3 - 12 to 5 pm
- Thursday, June 5 - 12 to 5 pm
- Monday, June 9 - 4 to 6 pm
- Tuesday, June 10 - 12 to 5 pm
- Thursday, June 12 - 4 to 7 pm
- Monday, June 16 - 4 to 6 pm
- Tuesday, June 17 - 12 to 5 pm
- Thursday, June 19 - 12 to 5 pm
- Thursday, June 26 - 12 to 5 pm
- Saturday, June 28 - 11 am to 6 pm
- Monday, June 30 - 3 to 5 pm

Contact *Sue* at 537-2349 during office hours, or just drop in. She may also be reached at office@uufm.net at anytime.

HELPFUL INFORMATION FOR MEMBERS AND FRIENDS

Contact Fellowship administrator Susan Turner at 539-3272 or office@uufm.net to **UPDATE YOUR MAILING, PHONE, or EMAIL** information, or to cancel your subscription to this newsletter. Members and friends may also reach Susan during her posted office hours (*see below*) at 537-2349.

If you have been considering **BECOMING A MEMBER** of UUFM, please contact our Welcoming and Membership Committee co-chairs, Mary Westfall at 539-5397 or westyks@hotmail.com, or Cathy Hedge at 537-1101 or cjhedgewriter@yahoo.ca, for information and assistance.

Fellowship members may receive the UUA magazine **UU WORLD**, without cost. Contact Fellowship administrator Susan Turner at 539-3272 or office@uufm.net. UU World may be viewed online at www.uuworld.org

Join in email discussions of interest to Fellowship members and friends on our **EMAIL LIST SERV**. List serv members may choose to receive each message individually as it is sent out to the list serv; receive one daily. Contact list serv moderator Ruth Welti at welti@ksu.edu to subscribe.

SUNDAY ANNOUNCEMENTS

Contact Marolyn Caldwell at 776-4862 or marolync@flinthills.com *by 12 noon, on Friday*, with announcements of interest to Fellowship members and friends for inclusion in the Sunday program guide. Remember to check the program guide each week for announcements of upcoming activities and events.

CARING FOR MEMBERS AND FRIENDS

If you could use a hand, or if you know members or friends who are experiencing life challenges, and would appreciate assistance, please let our Caring Committee know. Contact Caring Committee co-chairs Barbara Hacker at 587-8002, or Yvonne Lacy at 539-4404 or yvcq67lacy@sbcglobal.net

BUILDING USE AND SCHEDULING

Please check with Susan Turner to be sure your desired date is available before finalizing plans for committee meetings, Fellowship activities, or private events that will be held in the Fellowship building. The building is available for Fellowship-sponsored activities without cost. Members and friends may schedule private events for a small fee, which includes a refundable deposit. To confirm building availability and schedule your activity, or for more information, contact Sue at 537-2349 or office@uufm.net

JUNE NEWSLETTER DEADLINE

The deadline for submissions to the July newsletter will be Sunday, **JUNE 15**. Please send news, meetings, announcements, and events to Susan Turner at 539-3272 or office@uufm.net