



NOVEMBER 2008 PROGRAMS

NOVEMBER 2 "CREATIVE CONFLICT"

Reverend Thea Nietfeld describes this program, "The paradox of a congregation of heretics gives each UU the opportunity to become skillful at engaging conflicts creatively. Our tradition's principles and exemplars offer guidance." Contact/convener is *Michael Nelson* at (913) 961-2626 or minister@uufm.net

NOVEMBER 9 "EXPANDING OUR PROGRESSIVE RELIGIOUS TRADITION"

Reverend Michael Nelson reflects, "We celebrate our Unitarian Universalist identity by affirming our common bonds and making progressive religion available to all who need it. The Unitarian Universalist Association and SCORE (Southern Cluster Outreach and Extension Ministry) are essential elements in helping us achieve the visibility and viability necessary to extend and strengthen our connections. *Michael* may be contacted at (913) 961-2626 or minister@uufm.net

NOVEMBER 16 "TRENDS IN ARELIGIOUS SPIRITUALITY: CAUSE FOR CONCERN OR OCCASION FOR HOPE?"

The "spiritual, but not religious" young adult is changing the religious landscape in postmodern America. Reverend David Jones explores how key intellectual and cultural developments over the past 30 years have shaped the spirituality of young adults and today's religious communities. Contact/convener is *Kathleen Oldfather* at 537-3738 or koldfather@yahoo.com

NOVEMBER 23 "DOES LIBERAL RELIGION RAISE POLITICAL LIBERALS?"

Many of us come to Unitarian Universalism because we want a place to help raise our children. How does growing up UU influence our politics and work for our communities? Members reflect on how their childhood as UUs helped shape their lives today. Contact/convener is *Eric Banner* at 776-7649 or banner.eric@gmail.com

NOVEMBER 30 "ARCHITECTS AND BUILDINGS OF MANHATTAN"

The space around us affects the way we live. In the first of possibly several explorations on similar themes, we will be joined by Professor Emerita Patricia O'Brian. The Riley County Historical Society has published her work. Contact/convener is *Elke Lorenz* at 539-3527 or ellorenz@uufm.net

We'll celebrate the Thanksgiving season with a **SOUP SUNDAY** potluck following the service. Learn more on page 4 of this newsletter.

UU FELLOWSHIP OF MANHATTAN

PO Box 910
Manhattan, KS 66505
(785) 537-2349

www.uufm.net

REV MICHAEL NELSON, minister
(913) 961-2626
minister@uufm.net

ELKE LORENZ, Executive Board Chair
(785) 539-3527
ellorenz@uufm.net

SUNDAY SERVICES
begin at **10:45 AM**
at **481 ZEANDALE ROAD**

INSIDE THIS ISSUE	PAGE
Michael's Musings	2
Minister's Schedule	2
RE / Youth Activities	3
DRE's Schedule and Bio	3
Activities and Events	4
Social Action	5
Volunteer Opportunities	5
Words from Our Chair	6
Board meeting	6
Recycling UU World magazine	6
Coffee Providers and Greeters	7
Administrator's Schedule	7
Member Info / Subscriptions	7
Note from Shanteau Family	8
Camp StarTrail	8
November Calendar	9

CREATIVE CONFLICT WORKSHOP

Join us for an interactive Creative Conflict workshop Saturday, **NOVEMBER 1**, from 1 to 4 pm, at the Fellowship. Workshop participants will gain tools to deal with community conflict in a calm, creative, consensus-oriented way, and learn to allow opponents to become friends.

Workshop facilitator Rev Thea Nietfeld studies, practices, and teaches Gandhian nonviolence, peaceful communication, and restorative justice. She has served as minister of the UU Congregation of Tahlequah, Oklahoma, since 2001.



**UUUFM is a
WELCOMING CONGREGATION**

Learn more about the Welcoming Congregation initiative at www.uua.org/visitors/justicediversity/6252.shtml

As fall turns its leafless limbs towards winter, nature's cycles become starkly apparent. Yet, autumn is often the best time to plant perennials and fruit trees, because all of the plant's living energy moves underground to grow roots. In our Fellowship we gain new members and friends as loyal members move to Colorado, New Mexico ... Others move from beloved homes to new homes at Meadowlark or to live closer to their children.



The network of our Fellowship roots spread and deepens through intentional organization, but as important, are those connections that do not require a chair, secretary, members with tasks to accomplish. Long friendships continue to nourish and support as new ones develop. The inner networking becomes more real to me as I hear members casually mention how they watched another family's children when an emergency arose, gather together to watch the debates, read each others blogs, play bridge, or take someone who can no longer drive to a concert, a talk, or to Sunday service. The list of examples grows longer and longer. All this points to the robustness of our evolving root system. The more informal nature of these connections is not something to quantify, but does help us to sense the good health of our community.

And of course there is so much that we all sense as we gather on Sunday's or other activities organized at the Fellowship. Our current exhibit of photographs by our members induces a smile whenever I walk into the narthex. Watching babies become toddlers, and toddlers sprout into children ... to see Kia and Rose walking, and begin to race from their parents to something that is off limits is a feather brushing on the funny bone. Julia, still in her mother and father's arms, becomes increasingly focused in her observations. When a smile breaks across her face I find myself held in a web of wonder. And to round this out we have two mothers who are pregnant with child. As the baby grows and the mother's belly swells towards its fullness, it sometimes makes me pause and feel the amplitude, the vibration of expectancy, the sense of life flourishing. Of course, I am

not the one with morning sickness and tired feet. As I celebrate these signs of growth, I also empathize with the discomfort it may sometimes cause.

Maria Snyder, our first paid Director of Religious Education, and I met for coffee to explore what this new era might look like. Two hours swiftly passed and I left enthused; filled with a sense of the bright and burgeoning prospects for the future of our Fellowship. These cycles of nature and the life of our UU community are a gift that lifts from the infinite creativity of existence. Each one of us is a part of this intricate and vast mystery which we explore together and in our individual journeys.

May we find the peace and vitality that rises from our continuing exploration no matter at what stage of life we find ourselves.

Michael

Michael Nelson's Schedule

This month, Reverend Michael Nelson will be available in the Fellowship office on:

Monday,	November	3 - 3 to 5 pm
Wednesday,	November	5 - 12 to 2 pm
Monday,	November	10 - 3 to 5 pm
Thursday,	November	13 - 5 to 7 pm
Tuesday,	November	18 - 5 to 7 pm
Thursday,	November	20 - 4 to 7 pm

November 24 through November 30, Michael will be taking a few vacation days. He will be available *for emergencies only* during this time.

During office hours, call Michael at the Fellowship at 537-2349. Meetings may be arranged at times other than posted office hours. Contact Michael at (913) 961-2626 or minister@uufm.net to make arrangements.

ORDINATION OF JILL JARVIS

On Saturday, **NOVEMBER 22**, Jill Jarvis--our SCORE minister, and a frequent speaker at our Sunday services--will be ordained at All Souls UU Church in Kansas City. Ask Michael Nelson to learn more.

CREATIVE CONFLICT WORKSHOP

Michael encourages all members and friends who are able to participate in the interactive Creative Conflict workshop at the Fellowship on Saturday, November 1, from 1 to 4 pm, lead by UU minister Thea Niefeld. Learn more on page 5.

THIS YEAR IN RE ...

The Fellowship offers organized Sunday morning religious education experiences for students from preschool through high school. Childcare is available for younger children.

This year's theme is "Exploring our Judeo-Christian Heritage." Programs for all grades--pre-school through senior high--draw from various curricula and introduce our children to religious literature that is central to North American culture and to Unitarian Universalist heritage. Children will become familiar with their cultural heritage, and the human issues that inspired these scriptures: the timeless themes of transcendent power, human responsibility, love of freedom, speaking out against injustice, respect for the beliefs of others, love of one's neighbor, and forgiveness.

To learn more about Youth Religious Education at UUFM, and to learn how you can contribute to our youth activities, contact RE Committee chair *Sandy Nelson* at 341-0135 or SandraLouNelson@yahoo.com

VOLUNTEERS NEEDED

Our Middle School and High School age students (grades 6 thru 12) are in the process of developing a youth group and are looking for *a few adult advisors*. Interested? Contact Sandy Nelson at 341-0135 or SandraLouNelson@yahoo.com

SPECIAL RE FUNDING

A Special RE fund was started in May to help cover some of the costs of supporting our new RE Director (DRE). Memorial contributions and other donations have been made, and we continue to work toward our set goal of \$20,000. THANK YOU to everyone who has offered effort, support, and financial contributions to this important milestone in our Fellowship's growth! Learn more about the Special RE Fund from UUFM bookkeeper *Kathleen Oldfather* at 537-3738 or koldfather@yahoo.com

Welcome to the Family!

Our new Director of Religious Education (DRE) MARIA SNYDER, begins her position on November 1. Below, Maria introduces herself, her family, and her vision for the future of the UUFM RE program:

I wanted to introduce myself to anyone that I haven't met yet. My name is Maria Snyder. I am originally from Kansas City. I live with my husband, Dusty, and my daughters Alex (13) and Rayna (8). My son Christopher (11) lives in Kansas City with his dad. We've spent the last three years experiencing other parts of the country, two years in Las Vegas and prior to that Baton Rouge. Dusty is the Deli Manager at People's grocery and also works as a cook at the Clarion. I am attending K-State as a freshman in Anthropology. I first found UU in Kansas City at Gaia Community about eight years ago. The UU Church has been my home ever since.



I want to thank you all for welcoming me as your new DRE and I want to share my vision with you. I want to see what ideas everyone has for the RE program from the kids in the program, the teachers, the RE Committee, and all members, and do what I can to create a program that takes those ideas and weaves them into the RE program. I look forward to meeting with you all and hearing what you think the future of the RE program should look like. I am excited about sharing this journey with you.

DRE's Schedule

In November, Maria Snyder will be in the Fellowship office on:
Tuesdays from 11 am to 4 pm
Wednesdays from 1 to 6 pm
Saturdays from 11 am to 4 pm
and Sundays from 8 am to 1 pm

Maria's schedule will appear on the RE page of the newsletter each month. Contact her at 537-2349 or dre@uufm.net

YOUTH CHOIR

The UUFM Youth Choir, directed by Sarah Nuss-Warren, rehearses before the morning service on the first and third Sundays of each month. This month, rehearsals will be on Sunday, **NOVEMBER 2**, and Sunday, **NOVEMBER 16**, in the Inez Alsop all-purpose room (old sanctuary) at 10:15 am. All children and youth are invited to join in our song. Learn more from *Sarah* at 537-3586 or nusswarr@gmail.com



UUFM YOUTH CHOIR W/ADULT SINGERS

NOVEMBER ACTIVITIES AND EVENTS

Members and friends are encouraged to join us for a **CREATIVE CONFLICT WORKSHOP**, on Saturday, NOVEMBER 1, from 1 to 4 pm, at the Fellowship. Rev Thea Nietfeld focuses on "calm, creative, consensus-oriented conflict, in which our opponent becomes our friend." Learn more on page 5.

The **MEN'S LUNCH** meets EVERY WEDNESDAY, at 12 noon, in the Inez Alsop all-purpose room (old sanctuary). Bring a desire for stimulating conversation and a sack lunch for yourself. Contact Charley Kempthorne at 564-1118 or charley@thelifestoryinstitute.com, or Jack Warren at 539-4073 or jomega@ksu.edu

The UUFM Social Committee will host a monthly **CRAFT GROUP SOCIAL** on the second Sunday of each month this winter. Are you crafty? Anyone interested in sharing company and/or advice while working on their fall craft projects is invited to join us on Sunday, NOVEMBER 9, from 12 to 2 pm, in the Inez Alsop all-purpose room (old sanctuary). Bring your supplies and your positive spirit and we'll enjoy a few hours of craft and social time! You are welcome to bring a snack to share if you like. Learn more from Courtney Markle at 236-1563 or clmarkle@hotmail.com



The **WOMEN'S LUNCH GROUP** meets Wednesday, NOVEMBER 12, at 12 noon, at Harry's Restaurant, 418 Poyntz Avenue, in the Wareham Hotel. All interested Fellowship members, friends, and guests are invited! Contact Florence Schwab at 539-0976 or fschwab@cox.net, to learn more.

The **UU DRUM CIRCLE** gathers on Friday, NOVEMBER 14, at 7 pm, in the Fellowship's new sanctuary. Members, friends and guests of all ages are invited to bring their drumming instruments and drum with us. Instruments are also available to borrow. Come join us for a good time. Learn more from Pat Embers at 539-2819 or embers1@cox.net

MEDITATION practice meets this month on Thursday, NOVEMBER 20, from 5:30 to 6 pm, before our regular Third Thursday Supper. Come breathe after a long day, and then join us for a meal and conversation. Learn more from Michael Nelson at (913) 961-2626 or minister@uufm.net

Join us for **THIRD THURSDAY SUPPER** on NOVEMBER 20, at 6 pm, in the Inez Alsop all-purpose room (old sanctuary). You may bring food to share, but it's not required. Bring your smile, family, friends, and guests, and let Rev Michael Nelson and fellowship administrator Susan Turner take care of dinner! Contact Sue at 539-3272 or office@uufm.net

The **BOOK DISCUSSION GROUP** will meet on Wednesday, NOVEMBER 26. Watch for this month's title and location in Sunday service bulletins. New members are always welcome. To learn more, ask Lorrie Cross at 539-7883 or lmcross@kansas.net

The Social Committee will host a **SOUP SUNDAY** following the Sunday service at 12:15 pm, on NOVEMBER 30. Four different kinds of homemade soup will be served. Participants are encouraged to bring an item to share, such as bread, crackers, cheese, fruit, fresh vegetables for a relish tray, or dessert. Learn more from Courtney Markle at or clmarkle@hotmail.com



SHARING YOUR KNOWLEDGE AND CREATIVITY

The UUFM Aesthetics Committee seeks members and friends who would like to share their interests and creativity in a variety of ways.

ARRANGEMENTS: Consider contributing arrangements of flowers and/or other natural materials for a Sunday service. Sign up on the list in the kitchen or contact an Aesthetics Committee member.

EXHIBITIONS: We are looking for works by members and friends to exhibit in the narthex and hall. We will try to have several different shows in a year, one of photography and another for painting, drawing, etc. Contact one of the committee members if interested.

SHARE, LEARN, GROW: Volunteer to share an important event in your life, a trip, a biographical summary, activity or hobby, favorite poet, author, or any interest or expertise. Just mount photos, etc, on foam core boards to hang in the old sanctuary. See committee members for help or ideas.

Learn more from Lorrie Cross at 539-7883 or lmcross@kansas.net, Anne Marchin at 539-3026 or annemarchin22@hotmail.com, Harriette Janke at 539-0865 or ahjanke@sbcglobal.net, or Monta Manney at 537-0624.

UUFM SINGERS

The Choir rehearses from 9:30 to 10:30 am on the first and third Sunday of each month, in the new sanctuary. This month we'll meet on **NOVEMBER 3** and **16**. Learn more from Michael Oldfather at 537-3738 or mou812@ksu.edu

SOCIAL ACTION AT UUFM

VOLUNTEER AND SOCIAL ACTION OPPORTUNITIES

This month, Fellowship volunteers prepare and serve **HAPPY KITCHEN COMMUNITY BREAKFASTS** on Friday, NOVEMBER 14, and NOVEMBER 28, from 7:30 to 9 am, at St Paul's Episcopal Church. **VOLUNTEERS ARE NEEDED.** The meal is free and all are invited to join us for good food and fellowship. Of course, your donations are welcome. Learn more from Anne Marchin at 539-3026 or annemarchin22@hotmail.com. *THANK YOU TO ALL OUR LOYAL VOLUNTEERS!!!*

GREETERS share a smile as folks arrive on Sunday morning; encourage visitors to sign our guest book; answer questions; and help to create a warm and welcoming atmosphere at UUFM. Ask Welcoming Committee co-chair Jo Maseberg-Tomlinson at 477-2759 or jo.maseberg@gmail.com to learn more.

Host Sunday Coffee Hour. **REFRESHMENT PROVIDERS** are needed each week to host coffee time following Sunday services. Volunteers make coffee, provide a light snack of no more than two or three food items, and take care of the necessary clean up. There is a sign-up sheet on the bulletin board in the kitchen, or ask or Gwen Geiselman at 776-4505, or Betty Banner at 776-1887 or bettybanner@gmail.com, to learn more.

Fellowship volunteers periodically deliver government food commodities to individuals unable to pick them up from **FLINT-HILLS BREADBASKET**. If you can share two hours of your time during an upcoming delivery, it would make a world of difference to someone. For more information, contact Pat Weisenburger at 539-4711 or patw@ksu.edu

The Manhattan Alliance for Peace and Justice (MAPJ) continues weekly **ANTI-WAR DEMONSTRATIONS** on Wednesday afternoons, from 4:30 to 5:30 pm, in Triangle Park, at the corner of Bluemont and Manhattan Avenue, in Aggieville. Please contact Anne Cowan at 537-2025 or anne_cowan@sbcglobal.net to learn more.

HELPING HANDS SUNDAY

On NOVEMBER 9, our Helping Hands Sunday beneficiaries will be the Unitarian Universalist Association of Congregations (**UUA**); and **SCORE** (Southern Cluster Outreach Extension), a regional organization supporting small and emerging UU congregations in the southern part of the UUA's Prairie Star District. SCORE's mission is to establish new congregations, provide ministerial support and services, and foster enhanced communications and resource sharing throughout the cluster.

On October 12, our congregation raised \$509 for the Chapman School District! In addition, Fellowship members Mike and Laura Bonella contributed a gift certificate that will allow the district to replace an aquarium and fish that were lost in the tornado. All cash contributions and checks placed in the offering basket on the second Sunday of the month will go to the Helping Hands Sunday beneficiary, and should be made out to UUFM. Write "UUFM" in the memo line if you wish your contribution to benefit the Fellowship. Learn more from our Helping Hands Sunday coordinator Yvonne Lacy at 539-4404 or yvcq67lacy@sbcglobal.net

EQUAL EXCHANGE COFFEE AND CFLS

Fair Trade products are offered for purchase at the Fellowship following Sunday programs. Regular, decaf, whole bean, and ground coffees, as well as chocolate, and tea are available. Special orders can be taken. To learn more, or to purchase Fair Trade products, please contact Anne Cowan at 537-2025 or anne_cowan@sbcglobal.net or ask her on Sunday mornings. Learn more at www.equalexchange.com



Anne also coordinates the sale of COMPACT FLUORESCENT LIGHT BULBS (CFLs) on Sunday mornings, in support of the Fellowship's efforts to encourage green living.

CREATIVE CONFLICT WORKSHOP

Election rhetoric--our current model for civic conflict--can be dishonest and destructive, bombastic, and barbarous. Let's practice an alternative: calm, creative, consensus-oriented conflict ... in which our opponent becomes our friend.

Plan now to participate in an interactive Creative Conflict workshop on Saturday, **NOVEMBER 1**, from 1 to 4 pm, at the Fellowship, and join us for our morning service with this theme on Sunday, November 2.

Rev Thea Nietfeld--facilitator of the workshop on November 1, and our guest speaker on the following Sunday--studies, practices, and teaches Gandhian non-violence, peaceful communication, and restorative justice. She has served as parish minister of the UU Congregation at Tahlequah, Oklahoma, since 2001, and will shift to peacemaking community ministry in January 2009. Learn more from Michael Nelson at (913) 961-2626 or minister@uufm.net

WORDS FROM OUR CHAIR

Dear Fellowship Members and Friends,



Maria Snyder, our first ever Director of Religious Education will begin her half-time (20 hours/week) position on November 1, 2008. We are currently working out the details of her employment, such as work

space, technology support, and times she will be available on the Fellowship premises, etc. Maria will be in the building three Sundays per months, which will give all of us plenty of opportunity to interact with her. Please give Maria a warm welcome when you see her and assure her of your support as she transitions into this new position. The Fellowship has applied for a Chalice Lighter Grant to help us with financing the DRE position.

The DRE will bring our number of paid staff to four: our minister, Michael Nelson, at 60% time; our administrator, Susan Turner at 50% time; our DRE, Maria Snyder, at 50% time, and our Custodian, Troy Fisher, who works for us regularly on an hourly basis.

The Long-Range Planning committee, under the leadership of Brice Hobrock, has resumed its work, which includes the development of an emergency management plan for the Fellowship, planning some outreach events to help attract new members as part of a medium range plan, and beginning discussions how to go about a comprehensive facilities plan. The Committee on Ministry is working on its job description and has begun its discussions about the effectiveness of the overall ministry of the Fellowship.

During the October Board meeting, the Executive Board, in addition to its recurring monthly agenda, read an article by Dan Hotchkiss published by the Alban Institute "Who Owns a Congregation." We shared our thoughts about this topic and had different opinions on it. Several Board members argued that the membership owns the congregation. The author of the article

argues that, "The owner of a congregation is its mission." What is your opinion on that?

The Lawrence Unitarian Fellowship celebrated the dedication of a new addition to their building. It was a joyful event that was attended by many UUs from regional congregations. The I-70 choir, under partial leadership of Michael Oldfather, gave a wonderful choir concert at the event.

Please let us know how you think the Executive Board is doing and if you have any questions or concerns about Fellowship life.

On behalf of the Executive Board,

Elke Lorenz

UUFM Executive Board Chair

Contact Elke at 539-3527 or ellorenz@uufm.net

EXECUTIVE BOARD MEETING

The Executive Board meets Thursday, NOVEMBER 13, at 7 pm in the Inez Alsop all-purpose room (old sanctuary). Members and friends of the Fellowship are welcome and encouraged to attend. To learn more, contact Executive Board Chair Elke Lorenz at 539-3527 or ellorenz@uufm.net

RECYCLE YOUR OLD UU WORLD MAGAZINES

The Fellowship's Welcoming and Membership Committee would like to collect old UU World magazines, after members have finished with them. The magazines will be included in packets, which will be given to interested visitors to the Fellowship, to help them learn what UUism is all about. If you would like to help, please ask Membership Committee co-chair Jo Maseberg-Tomlinson at 477-2759 or jo.maseberg@gmail.com



SUNDAY COFFEE PROVIDERS

November 2: Scott / Kathleen Tanona
 November 9: Betty / Sara Banner
 November 16: Abigail Conrad
 November 23: *Volunteers Needed !!!*
 November 30: Soup Sunday

THANK YOU to our coffee hosts! Volunteers make coffee, serve a simple snack, and clean up afterwards. A sign up sheet is posted on the bulletin board in the kitchen. Learn more from Betty Banner at 776-1887 or bettybanner@gmail.com, or Gwen Geiselman at 776-4505.

We **ENCOURAGE HOSTS TO CUT BACK** to no more than two or three simple food items on Sunday mornings.

Administrator's Schedule

In November, Susan Turner will be available in the Fellowship office on:

Monday, Nov 3 - 3 to 5 pm
 Tuesday, Nov 4 - 12 to 5 pm
 Thursday, Nov 6 - 12 to 5 pm
 Monday, Nov 10 - 3 to 5 pm
 Tuesday, Nov 11 - 12 to 5 pm
 Thursday, Nov 13 - 4 to 7 pm
 Monday, Nov 17 - 3 to 5 pm
 Tuesday, Nov 18 - 12 to 5 pm
 Thursday, Nov 20 - 4 to 9 pm
 Thursday, Nov 27 - 12 to 5 pm
 Saturday, Nov 29 - 11 am to 6 pm

Call Sue at 537-2349 during office hours, or drop by the office. She may be reached at any time by email at office@uufm.net

SUNDAY MORNING GREETERS

Nov 2: Courtney Markle
 Nov 9: Sarah Nuss-Warren / Jen Lygren
 Nov 16: Dick Beeman / Colina Stanton
 Nov 23: Jennifer and Dale Askey
 Nov 30: June and Charley Kempthorne

Greeters are vital to creating a welcoming atmosphere. This is an easy way to support the Fellowship, when you only have an occasional hour to give. Learn more from Jo Maseberg-Tomlinson at 477-2759 or jo.maseberg@gmail.com

HELPFUL INFORMATION FOR MEMBERS AND FRIENDS

Contact Fellowship administrator Susan Turner at 539-3272 or office@uufm.net to **UPDATE YOUR MAILING, PHONE, or EMAIL** information, or to cancel your subscription to this newsletter. Members and friends may also reach Sue during her posted office hours (*seen at center left*) at 537-2349.

If you have been considering **BECOMING A MEMBER** of UUFM, please contact our Welcoming and Membership Committee co-chairs, Mary Westfall at 539-5397 or westyks@hotmail.com; Cathy Hedge at 537-1101 or cjhedgewriter@yahoo.ca; or Jo Maseberg-Tomlinson at 477-2759 or jo.maseberg@gmail.com for information and assistance.

Fellowship members may receive the UUA magazine **UU WORLD**, without cost. Contact Fellowship administrator Susan Turner at 539-3272 or office@uufm.net. UU World may be viewed online at www.uuworld.org

Join in email discussions of interest to Fellowship members and friends on our **EMAIL LIST SERV**. List serv members may choose to receive each message individually; as one daily "digest;" or check messages by logging into our list serv web site. Contact list serv moderator Ruth Welti at welti@ksu.edu to subscribe.

UUFM bookkeeper Kathleen Oldfather announces **ELECTRONIC PAYMENT** of your pledge contributions is now available. If you wish, pledge installments can be debited automatically from your checking or savings account on a weekly, bi-weekly, or monthly basis. There is no cost for this service. Ask Kathleen at 537-3738 or koldfather@yahoo.com, or pick up literature and a payment form on the info table in our narthex.

SUNDAY ANNOUNCEMENTS

Please contact fellowship administrator Susan Turner at 537-2349 or office@uufm.net, **NO LATER THAN THURSDAY MORNING** with announcements and events for inclusion in the Sunday morning Order of Service bulletin. Remember to check the bulletin each week for important announcements of upcoming activities and events.

CARING FOR MEMBERS AND FRIENDS

If you could use a hand, or if you know members or friends who are experiencing life challenges, and would appreciate assistance, please let our Caring Committee know. Contact Caring Committee co-chairs Yvonne Lacy at 539-4404 or yvcq67lacy@sbcglobal.net, or Barbara Hacker at 587-8002.

BUILDING USE AND SCHEDULING

Please check with Susan Turner to be sure your desired date is available before finalizing plans for committee meetings, Fellowship activities, or private events that will be held in the Fellowship building. To confirm building availability and schedule your activity, or for more information, contact Sue at 537-2349 or office@uufm.net

DECEMBER NEWSLETTER DEADLINE

The deadline for submissions to the December newsletter is Saturday, **NOVEMBER 15**. Please send news, meetings, announcements, and events to Susan Turner at 539-3272 or office@uufm.net



FROM THE FAMILY OF DOREEN SHANTEAU

We would like to thank the Fellowship for your support and encouragement during Doreen's illness and following her death. She would be truly touched, as were we, by all of the individuals that came together to make her memorial service and reception possible. Thank you for being willing to journey with us during this difficult time. We miss her dearly.

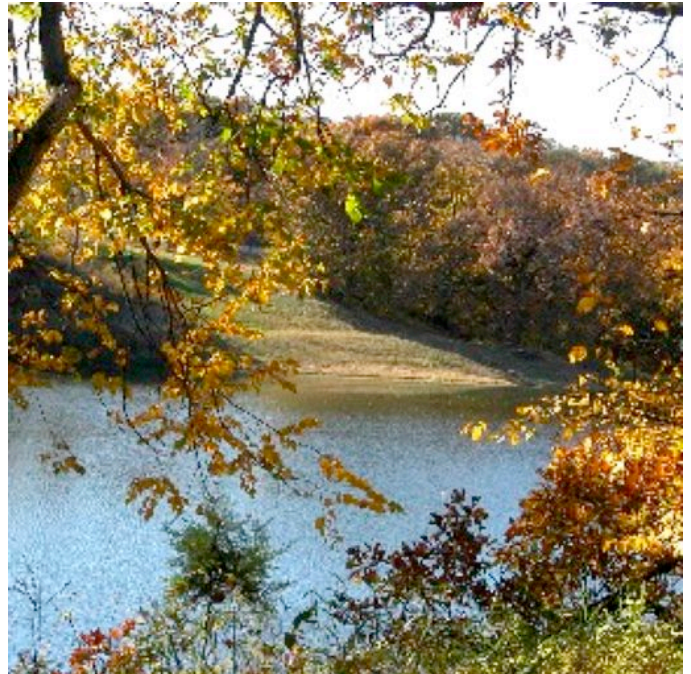
Jim, Karen, Dave, and Jill Shanteau

CAMP STARTRAIL 2009

If you're already dreaming about the warm, sunny days of Summer 2009, we invite you to consider attending a UU camp, sponsored by the UUA's Prairie Star District.

Camp StarTrail will be held August 2 thru 7, 2009, near Omaha, Nebraska. Join us for a multigenerational camp that celebrates and explores Unitarian Universalism, in the beautiful rolling hills of the Platte River Valley. From the morning Celebration, to the workshops, to the evening Vespers and campfires, there will be fun and good conversation. If you'd prefer to sit in a rocking chair and read a good book, you'll enjoy the quiet of the woods, lake, and sky.

Costs are reasonable. A single adult would pay \$375 for registration, room and board, or higher for premium housing. Depending on what housing you choose, a family of four (two young adults, one child over four, one child under four) could pay just \$900 for a comfortable air conditioned room with bunk beds; less expensive if you plan to camp out in your tent. Another family of four (2 adults, 1 teen over 13, 1 child over four) would pay \$1,300 or higher, depending on the housing you choose, or less if you camp. If you compare this to costs for attending Camp Unistar, you'll see it's comparable. If you compare this to a trip to the Grand Canyon or Yellowstone, it's much less. Additional options will include challenging ropes courses and trips to nearby museums.



Photos of the camp are available on the Prairie Star District Web site at www.psduua.org/CampStarTrail. We're renting a Lutheran camp for the week. There's a swimming pool, a small lake for canoes and paddleboats, and excellent food.

Registration will be open in mid-January. Watch the District's Web site at www.psduua.org for more information.