



THE UUFM VOICE

APRIL 2014
VOLUME 52, ISSUE 11

APRIL 2014 PROGRAMS

APRIL 6 "INSIDE THE LITTLE UNIVERSE"

Rev Michael Nelson reflects, "The mass of the universe is believed to have first escaped from subatomic sized dense energy. From what often is too small to recognize big things emerge. As this is true in cosmology, it is often true in life. Paying attention to how we approach the littlest things in our lives can expand the understanding of our lives to cosmic proportions." Contact Michael at 537-2349 or minister@uufm.net.

APRIL 13 "HUNGER FOR JUSTICE"

Celebrate the first UUA MidAmerica Regional Assembly right here at UUFM! We will present a recording of one of the services from the Regional Assembly in Topeka, along with our usual opportunities to connect with one another. Contact/convener is Matt Campbell at (913) 709-4693 or mcampbel@ksu.edu.

APRIL 20 "RESTORE IN US THE LOVE OF LIVING"

Rev Michael Nelson asks, "In this season of new growth how do we replenish what has been worn down by a long winter? The emergence of fresh green and the happy faces of daffodils helps us to open ourselves to the verdant vibrancy within. Our progressive faith asks us to examine the intricate link between birth and death; to celebrate Easter with a full appreciation for this time of renewal." Contact Michael at 537-2349 or minister@uufm.net.

Our annual Easter Potluck Bruch and Easter Egg hunt follows the April 20 program.

APRIL 27 "(Wo)MAN, THE PATTERN SEEKER"

Join Kansas State Emerita Director of Nonviolence Education Susan Allen for a discussion of nonviolence at K-State and in our everyday lives. Contact/convener is Michael Nelson at 537-2349 or minister@uufm.net.

Our 2014 Annual Meeting follows the April 27 program. Learn more on page 6 of this newsletter.

UU FELLOWSHIP OF MANHATTAN

PO Box 910
Manhattan, KS 66505
(785) 537-2349
office@uufm.net / www.uufm.net

REV MICHAEL NELSON, minister
minister@uufm.net

TOM PHILLIPS, Executive Board Chair
(405) 880-6483
tphillips@uufm.net

SANDY NELSON, Director of Religious Ed
DRE@uufm.net

SUNDAY SERVICES begin at **10:45 AM**
at **481 ZEANDALE ROAD**

INSIDE THIS ISSUE	PAGE
Michael's Musings	2
Michael Nelson's schedule	2
<i>A Special Invitation</i>	2
Religious Ed / Youth / Families	3
Parent Night Out / <i>Pride Parade</i>	3
Events and Activities	4
Meadowlark Service	4
Social Action / Helping Hands	5
MAPJ Annual Potluck	5
Volunteer Opportunities	5
<i>2014 Annual Meeting Details</i>	6
All About Us / New Art Exhibit	7
Coffee and Greeting Teams	8
Admin Schedule / Subscriptions	8
April Calendar	9

SPECIAL EVENTS IN APRIL ...

UUFM's 2014 **ANNUAL MEETING** gathers following the morning program on Sunday, **APRIL 27**. Voting members will consider the proposed budget for the coming year, and candidates to fill open Board positions. Learn more on page 6 of this newsletter.

Join us following the morning program on Sunday, **APRIL 20**, for our annual **EASTER POTLUCK BRUNCH**. Don't miss the Easter egg hunt for the kids! Learn more on page 4.



UUFM is a WELCOMING CONGREGATION

Learn more about the Welcoming Congregation initiative at
www.uua.org/visitors/justicediversity/6252.shtml

After a harsh winter I am thankful for hardy rootstock that allows the trees in our orchard to survive. As spring slowly shows its face I look for signs of growth on bushes and perennials that do not fare well when the temperatures drop below zero. For the last couple of years, I watched a rosemary plant become a small bush, thriving with mild winters. It's a goner. I'll try another of this variety, but I'll be more careful in choosing bushes that are tolerant of minus zero weather as I begin to replace those that have died.



Roots are important. Our Unitarian Universalist faith founded in the Free Church branch of the Protestant Reformation in 16th Century Europe grew differently in American soil. Both religions resisted Calvinist doctrines: *total depravity (Original Sin) and Predestination*. Both religions could not fathom a God that before birth would chose some to be Heaven bound and others destined to Hell. American Unitarians believed that Jesus was an ethical teacher and it diminished his teachings if you believed that he had supernatural powers. American Universalists believed that all souls would be reconciled to a loving God that ultimately treated all people as equals.

These roots help us today to use our intelligence and heart to be of service in the world. Our Fellowship class that is studying *The New Jim Crow, Mass Incarceration in the Age of Colorblindness* has begun to explore how America incarcerates more of its racial and ethnic minorities than any other country in the world. In Baltimore, 50% of black men in their twenties are either in jail or have served time in jail. Once you have been convicted of a felony you can lose the right to vote and become ineligible for public housing and a host of programs that help people who are in need. We call our country *The Land of the Free*, but I am afraid it is a statement without sufficient roots to nourish the claim.

A month before Martin Luther King, Jr. was slain, he said, *I want to discuss the race problem tonight and I want to discuss it honestly. I still believe that freedom is the bonus you receive for telling the truth. 'Ye shall know the truth and it shall set you free.'* And I do not see how we will ever solve the turbulent problem of race confronting our nation until there is an honest confrontation with it and a willing search for the truth and a willingness to admit the truth when we discover it.

Reading Jane Alexander's alarming book informs us of how America deliberately recreated systems to replace slavery. If you do not want to read the book, please watch Bill Moyer's interview with her last year. It stuns.

On another front of human rights issues, our Fellowship's statement of principle on Marriage Equality has inspired the Salina, Hutchinson and Topeka Fellowships to make similar declarations. The roots of our free faith called us to publically declare our support for the rights of same sex couples to be married in Kansas. In the sanctuary of our Fellowship, on May 3rd, at 3 pm, Charles and I invite you to join us, as we have the ceremony the State insists on deprecating.

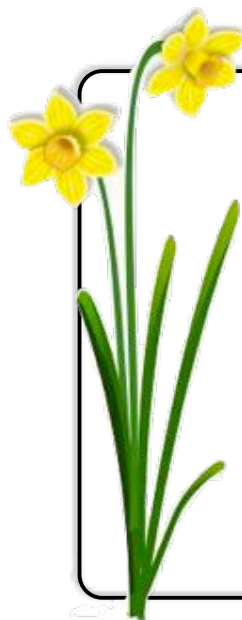
Michael

REV MICHAEL NELSON'S SCHEDULE

This month, Michael Nelson will be available in the Fellowship office on:

Tuesday, April 1 - 3 to 5 pm
Wednesday, April 2 - 5 to 7 pm
Tuesday, April 8 - 5 to 7 pm
Wednesday, April 9 - 5 to 7 pm
Wednesday, April 16 - 5 to 7 pm
Tuesday, April 22 - 3 to 5 pm
Wednesday, April 23 - 5 to 7 pm

During office hours, contact Michael at the Fellowship at 537-2349. To arrange meetings at other times, please call or email minister@uufm.net



A KANSAS WEDDING FOR MICHAEL AND CHARLES

MICHAEL NELSON, CHARLES DEDMON,
AND THE UNITARIAN UNIVERSALIST FELLOWSHIP
OF MANHATTAN
INVITE YOU TO JOIN US ON

SATURDAY, **MAY 3**, AT 3 PM
AT THE FELLOWSHIP

481 ZEANDALE ROAD, MANHATTAN

TO CELEBRATE MICHAEL AND CHARLES' UNION

RELIGIOUS EDUCATION

RE NEWS

APRIL FAMILY FUN - Saturday, APRIL 5 - Pride Parade
Please join us for the 5th Annual Little Apple Pride Parade. Let's show the greater community that UUFM is here and supports the LGBT community!

MARCH WITH UUFM: *Be a beacon ...* We need kids to help hold signs, ride bikes, and be colorful. We'll have lots of colorful crepe paper streamers to decorate bikes, trikes, wagons, and strollers. Gather in the parking lot at First Congregational Church (at the corner of Juliette and Poyntz) at 1:30 pm. The parade starts at 2 pm. Be sure to wear comfortable shoes and colorful clothing.

WATCH AND CHEER: Those who prefer to show their support by cheering on the marchers can gather at City Park near the Johnny Kaw statue along 11th Street. Bring your folding chairs and line the street at 2 pm. After the parade passes you can join it and march toward Aggieville or catch a ride to Triangle Park for the final festivities.

If you'd like to park your car in the university lot across from Aggieville for convenient access at the end of the day, I'll be there at 1:15 pm to shuttle folks to the starting point or to the watching point. Give me a call so we can coordinate.

Bring your friends. The more the merrier! *Sandy*

Learn more about all family and youth activities at the Fellowship from Director of Religious Education Sandy Nelson at 341-0135 or DRE@uufm.net

DRE'S SCHEDULE

In April, Sandy Nelson will be available in the Fellowship office on **TUESDAYS** and **THURSDAYS**, from 3:30 to 4:30 pm.

RE CLASSES - CAN YOU SHARE AN ADVENTURE?

The World Religions curriculum is coming to an end soon and we're starting to look toward summer and our popular UU World Travelers curriculum. Can you be a "tour guide" on one Sunday morning? This year we're also offering Spirit of Adventure for the 3rd through 6th graders. It's a hands-on curriculum sure to keep the older kids active and interested. Learn more from Sandy Nelson at 341-0135 or dre@uufm.net



PARENT NIGHT OUT

Bring the kids for Parent Night Out on the first Friday of each month. On **APRIL 4** drop the kids off at 6:30 and pick them up at 9:30 pm. As always, there will be fun, games, healthy snacks, and a movie! A \$5 per child voluntary contribution will help us cover expenses associated with this popular activity. *NOTE: We need parent volunteers to continue this popular event. Volunteer for one night, or just an hour or two if that's all you can squeeze in.*

Please RSVP no later than Thursday, April 3, so that Sandy Nelson can schedule adults to staff the evening, and gather supplies. Contact Sandy at 341-0135 or dre@uufm.net.

APRIL FAMILY FUN ...

Join us following the Sunday morning service on APRIL 20, for the Fellowship's annual **EASTER POTLUCK BRUNCH**, and **EASTER EGG HUNT**. Bring a dish to share at the potluck and join us for good food, and the fantastic company of our Fellowship family. If you can help with set-up, food service or cleaning up, contact Terri Franz at 537-2291 or terrijfranz@sbcglobal.net.



The annual **LITTLE APPLE PRIDE PARADE** will be on Saturday, APRIL 5, in Aggieville. Our Fellowship has participated every year and it's been fun! This year, we're hoping for a great turn out in support of the statement of principle on marriage equality recently passed by the congregation, and our long tradition as a welcoming community. Come to join us marching in the parade, or cheer us on from the sidelines.



We need volunteers to help set up the Fellowship's information table in Triangle Park from 2 to 3 pm, or staff the table from 3 to 5 pm.

Learn more from Molly McGaughey at 776-4543 or molly_mcgaughey@hotmail.com.

ACTIVITIES AND EVENTS - *events are open to all interested people ...*

The **MEN'S LUNCH** group meets EVERY WEDNESDAY, at 12 noon, in the Jupiter room (large RE room). Bring a desire for spirited conversation and a sack lunch for yourself. Learn more from Jack Warren at 539-4073 or jomega@ksu.edu.

Join us for our **ACTION WEDNESDAY (AWed) POTLUCK DINNER** on Wednesday, APRIL 2. Dinner begins at 6 pm, and committee meetings and social activities follow at 7 pm. Games and activities will be available. Learn more from Kathleen Tanona at 537-6208 or kmtanona@hotmail.com.

Discussion of **THE NEW JIM CROW: MASS INCARCERATION IN THE AGE OF COLOR-BLINDNESS**, continues on Wednesday evenings APRIL 2, 9, and 16, at 7 pm, at the Fellowship. Learn more from Michael Nelson at 537-2349 or minister@uufm.net.

The **WOMEN'S COFFEE** group meets EVERY MONDAY and THURSDAY at 9:30 am, at McDonald's in Westloop. Join us for morning coffee and conversation. Contact Barbara Hacker at 587-8002 or barbaradhacker@yahoo.com.

The **WOMEN'S LUNCH** group meets Wednesday, APRIL 9, at 11:30 am, at the Baan Thai Restaurant, 1620 Ft Riley Blvd, in Manhattan. Join us for lively talk and great company. Learn more from Harriette Janke at 539-0865 or ahjanke@cox.net.

The UUFM **DRUM CIRCLE** gathers at 7 pm, on Friday, APRIL 11, at the Fellowship. UUFM members, friends, and the wider community, those of all ages, and experienced or beginning drummers are welcome. Bring your own rhythm instrument or borrow one of ours. Contact Pat Embers at 539-2819 or embers1@cox.net.

On Saturday, APRIL 12, the **FLINTHILLS PAGANS** gather for the *Full Moon*. On Saturday, APRIL 19, there will be a *Handfasting* ceremony, and on Saturday, APRIL 26, join us for *Beltane*. Family-friendly Pagan events begin at 6 pm. Learn more about all activities from Heather Mingo at 341-6931 or flinthillspagans@gmail.com

The UUFM **BOOK DISCUSSION GROUP** meets on Wednesday, APRIL 30, at 7 pm, in the meeting room at Meadowlark Hills. We'll be discussing *Sanctuary*, by Faye Kellerman. Learn more from Margene Moss, 410-0562 or genie1940@yahoo.com, or Lorrie Cross at 539-7883 or lmcross@kansas.net.

NEW MEMBER RECOGNITION AND WELCOMING BREAKFAST

During the morning service on Sunday, **APRIL 6**, we will recognize and welcome members who have recently joined the Fellowship. Come early, before the April 6 service at 9 am, for a get-acquainted, continental breakfast for new friends and members and their families. If you did not receive an invitation, but would like to attend to and acquainted, contact Shirley Hobrock.

Fellowship friends interested in membership can learn more from Welcoming Committee chair Shirley Hobrock at 776-3175 or welcome@uufm.net, or Reverend Michael Nelson at 537-2349 or minister@uufm.net.



EASTER POTLUCK BRUNCH

Don't miss our annual Easter Brunch following the Sunday morning service on **APRIL 20**. *Bring a dish to share*, if you are able, and join us for good food and great company. Parents, ask Sandy Nelson, or an RE teacher, about the Easter egg hunt, which follows brunch! Learn more, and find out how you can help, from Terri Franz at 537-2291 or terrijfranz@sbcglobal.net

MEADOWLARK HILLS SERVICE

This month's Meadowlark Hills service gathers on Wednesday, **APRIL 23**, at 3 pm, in Meadowlark's Manhattan Room. Rev Michael Nelson will share passages inspiring us to live life fully, from Unitarian and Universalist writers. Bring passages you would like to share, by any author. Learn more from Michael at 537-2349 or minister@uufm.net

UUFM SINGERS

The UUFM Singers will rehearse on Sunday, **APRIL 6** and **20**, at 9 am, in the Main Sanctuary. Learn more about musical opportunities at the Fellowship from Michael Oldfather at 537-3738 or mou812@ksu.edu.

UU CAMPUS LUNCH

The UUFM Campus group meets on the second Thursday of the month, at 12 noon, at the Bluemont Buffet, on the 2nd floor of the K-State Student Union. Join us on **APRIL 10!** All are welcome. Invite your friends. Learn more from Molly McGaughey at molly_mcgaughey@hotmail.com or 776-4543.

SOCIAL ACTION AT UUFM

VOLUNTEER OPPORTUNITIES

There are always openings for volunteers on our Sunday morning **COFFEE AND GREETING TEAMS**. New members and friends find this is a great way to get acquainted, and it's an easy way to give to the Fellowship with a minimal investment of time--only three or four Sundays each year. Learn more from Elke Lorenz, 539-3527 or ellorenz@uufm.net

This month, Fellowship volunteers prepare and serve **HAPPY KITCHEN COMMUNITY BREAKFAST** on Friday, APRIL 4 and 18, from 7:30 to 9 am, at St Paul's Episcopal Church. *Volunteers are needed to occasionally fill in.* Breakfast is free and open to the community, providing a good meal for many who might otherwise go without. All are invited, and free will donations help us continue this service. Learn more from Jennifer Bryan at 537-0333 or snowbird@violinifer.com

ANNUAL MAPJ POTLUCK AND PROGRAM

The **MANHATTAN ALLIANCE FOR PEACE AND JUSTICE** will hold their annual Potluck and Program on Saturday, APRIL 5, at the UU Fellowship of Manhattan. The gathering begins at 5:30 pm with a social hour. A Potluck Dinner begins at 6:30 pm, followed by a program featuring immigration attorney and activist Angela Williams, exploring immigration policy and social justice in Kansas. Interested Fellowship members and friends are invited. Learn more from Anne Cowan at 537-2025 or acowan@uufm.net, or visit mapj.org.

MANHATTAN EMERGENCY SHELTER

Donate your aluminum cans to benefit the Manhattan Emergency Shelter, Inc, at Howie's Recycling, 625 S 10th Street. Funds generated from recycled aluminum will be placed in a designated account to be given to MESI.

HELPING HANDS SUNDAY

On Sunday, APRIL 6, Helping Hands contributions will be collected for the **FAIRY GODMOTHERS FUND**, providing flexible grants to improve the health and well being of women with limited resources who have immediate needs not met by traditional funding resources within the community. For more information visit their web site at www.fgfund.org

On March 9, Fellowship members and friends contributed to Wonder Workshop. THANK YOU all for your generous gifts!!! Learn more from Helping Hands coordinator Michael Oldfather at 537-3738 or mou812@ksu.edu.

FAIR TRADE COFFEE, TEA, AND CHOCOLATE

Equal Exchange whole bean, ground, and decaf coffees, as well as chocolate and tea are available for purchase. To learn more, or to purchase fair trade products, see Anne Cowan following Sunday morning services at the Fair Trade display in the Fellowship's narthex, or contact her at 537-2025 or acowan@uufm.net

Equal Exchange works in collaboration with the Unitarian Universalist Service Committee. They source goods directly from farmer cooperatives, following the standards and principles of fair trade on 100 percent of its products. This ensures that farmers earn a fair price for their crops, allowing them to better meet their families' basic needs for food, education, health care, and long-term security.



FELLOWSHIP MEMBERS
CARRY SIGNS IN THE 2011
LITTLE APPLE PRIDE PARADE.

Our **ANNUAL MEETING** will be held following the Sunday service on **APRIL 27**. Members are urged to take this opportunity to participate in the future of our Fellowship, as we discuss our hopes for fiscal year 2014/2015 (June 1, 2014 thru May 31, 2015). Please review the information provided below, to familiarize yourself with items to be discussed and voted upon.

PROPOSED FY 2014/2015 UUFM BUDGET

	FY 13/14 Budget	PROPOSED FY 14/15 BUDGET	YEAR TO YEAR CHANGE ACTUAL PERCENT	
EXPENSES				
Administration	2,250	2,250		
Building Contingency Fund	1,000	1,000		
Caring	100	-0-		
Committee on Ministry	-0-	-0-		
Communications/Publicity	4,305	4,760	455	+10%
Dues	8,798	8,383	(415)	-5%
Facilities	5,000	5,075	75	+2%
Green Sanctuary	100	100		
Insurance	3,200	3,895	450	+14%
Leadership Development	300	600	300	+100%
Legal Fees	40	40		
Membership	500	500		
Minister's Discretionary Fund	250	250		
Miscellaneous	500	-0-		
Music	400	400		
Payroll	92,732	92,732		
Program	1,750	2,350	600	+25%
Religious Education	1,960	1,960		
Sitter	260	260		
Social	540	840	300	+35%
Social Action	920	1,500	580	+39%
Utilities	6,250	7,500	1,250	+17%
Welcoming Congregation	250	250		
TOTAL EXPENSES	\$131,105	\$134,945	\$3,840	+3%
INCOME				
Contributions - Pledges	114,453	121,840	7,387	+9.3%
Contributions - Cash	2,500	2,500		
Contributions - Non-pledge	7,000	4,000	(3,000)	-43%
Fundraising	6,000	6,000		
Interest	5	5		
Other Income (mostly rental)	600	600		
TOTAL INCOME	\$130,558	\$134,945	\$4,387	+3.36%

NOTES ON PROPOSED 2014/2015 BUDGET

The proposed budget includes a 1.5% increase in salaries and raising DRE from 40% to 50% time. We over-budgeted Payroll last year, so these increases don't require an increase in the Payroll budget line.

Communications, Programming, Social, and Social Action requested about \$2,000 total in new projects to support the vision.

The cost of Insurance and Utilities are up.

We are budgeting to receive less income from contributions made that are not fulfilling a pledge, to better reflect what we've been receiving in recent years.

We will need a 14% increase in pledges over last year's actual pledges (\$106,908) to meet this budget (\$121,840 in pledges).

Contact Fellowship Treasurer Betty Banner with questions, or for clarification, on the proposed budget for Fiscal Year 2014/2015 (June 1, 2014 thru May 31, 2015). Betty may be reached at 776-1887 or bettybanner@gmail.com.

BOARD OFFICER NOMINEES

Executive Board candidates standing for election appear in **BOLD ITALICS**, below. Officers continuing their terms from the previous year appear in plain text:

- Chair - Kathleen Tanona
- Chair-Elect - **KATIE KINGERY-PAGE**
- Treasurer - **NATHAN ALBIN**
- Secretary - Sue Pray
- Member-at-Large - TBD (vacated mid-term)
- Member-at-Large - **MARK CLARKE**
- Past Chair - Tom Phillips

NEW UUFM ART EXHIBIT - CALLING ALL ARTISTS

The Aesthetics Committee will be changing the art exhibit in the Narthex on April 14! If you have some objects of personal expression of any kind, please consider bringing your art to the Fellowship in the next few weeks to be hung in the Narthex. Any medium is acceptable. In the past we have displayed fiber arts, watercolor, pastel, oil, photographs, ceramic, and prints. Just make sure they are in hangable condition with a wire, etc, to make them easy to display. Your contribution will make a great addition to the interest and enjoyment of the exhibit by the congregation. It is always surprising what a large percentage of our group is talented artists. We'd like to see some new participants, so jump right in! Works can be brought in on Sunday April 5 and 12, or dropped off during Susan Turner's office hours (see page 8), before April 14. Learn more from Aesthetics Committee chair Lorrie Cross at 539-7883 or lmcross@kansas.net.

\$HOP \$MART GROCERY PROGRAM

Do you know about the Smart Shopper program, benefiting UUFM each time you shop? For every \$100 you spend at Dillons, Ray's, and Hy-Vee, the store gives UUFM \$5. What a deal! Totally painless! All you have to do is pay \$50 for a grocery card to whoever is carrying around the red notebook after Sunday services. Each card for Ray's Apple Market and Hy-Vee is \$50. Then go buy your groceries. Each card worth \$50 gives our Fellowship \$2.50. Therefore, \$100 earns \$5 for us. Dillons is different, you pay \$5 to UUFM for the card, then go to customer service at Dillons to load it with whatever amount you want to put on it. Learn more from Harriette Janke at 539-0865 or ahjanke@cox.net.

UUFM FINANCES

Fellowship Treasurer Betty Banner offers this report on Fellowship finances:

Time Period	Income	Expenses	Net
February 2014	\$ 7,223.59	\$10,296.00	\$ (3,073.30)
Year to Date	\$90,654.59	\$91,542.88	\$ (888.29)

Learn more about Fellowship finances and pledging opportunities from Betty at bettybanner@gmail.com or 776-1887.

ALL ABOUT US

LINDA KROEGER joined the Fellowship last year. She was born and raised in Dyersville, Iowa, best known for its "Field of Dreams" connection, and grew up in a traditional Catholic family. Linda went to the University of Iowa and majored in nursing. She has since earned a Masters from Boston University and just recently a Doctor of Nursing Practice (or DNP) at KU. Her specialty is geriatrics.

Linda met Mike Herman at the University of Iowa. He is Jewish. They married, certain their life philosophies were enough alike to guide them in building a life and raising a family. Linda and Mike agreed to raise their two sons in the Catholic Church. After her youngest son told them he was gay, Linda found she could no longer attend the Catholic Church. But she did need some type of spiritual community without the doctrine and dogma. Her husband suggested UUFM where her friend, **M'ELIZ MAATTA**, was attending and enjoying services. Linda came with M'Eliz and found it very welcoming and interesting. She appreciates that you are welcome at UUFM no matter whom you love.

Linda's new venture is the community garden. She and a friend are going to develop green thumbs this summer while enjoying the great outdoors. Maybe she'll see some other UUs in the garden. *Welcome Linda.*

OTHER NEWS -

SUE PRAY recently became a grandmother to a lovely and healthy little girl. As a mother of two sons, it is especially exciting to have a granddaughter.

On the "not such good news" side of things, **CATHERINE HEDGE**'s mother recently suffered a stroke. Cathy went to California to help for a few weeks. She reports that her mom is improving and hopes to return home soon. **JACK WARREN**'s wife, **ALICE STOCKWELL**, suffered some seizures. She is in the hospital with plans to move to Meadowlark for rehab. **DON DAVIS** and **FRANZ SAMELSON** both had recent stays in the hospital and are recovering in Bramlage House at Meadowlark.

Recently, **HARRIETTE JANKE** and **CYBIL PERKINS** won an auction for a lunch at Jill Docking's home in Wichita. Jill is the current Democratic candidate for Lt Governor. Harriette invited her daughter **RHONDA JANKE**, **SHIRLEY HOBROCK**, **KATHLEEN OLDFATHER**, and **KAREN HUMMEL** to join her. Besides a fascinating discussion and delicious lunch with Jill Docking, they visited a great bookstore, a great bread store, and local art museums.

Please send your milestones, significant events, or news to Kathleen Oldfather at kjoldfather@gmail.com or 537-3738. We can't share it if we don't know!



COFFEE AND GREETING TEAMS

- April 6: Barbara Hacker, Terri Franz, and Margene Moss
- April 13: Harriette Janke, Ruth Friedmann, Tom Phillips, Stacey Broughman
- April 20: **EASTER POTLUCK BRUNCH**
Social Committee
- April 27: Betty Banner, Enell Foerster, and Katie Kingery-Page

THANK YOU to all of our coffee and greeting team volunteers. Serving on a Coffee and Greeting team is an easy way to give to the Fellowship, with a minimal investment of your time, just three or four Sundays each year. Learn more from Coffee and Greeting coordinator Elke Lorenz at 539-3527 or ellorenz@uufm.net

NEED A RIDE TO THE FELLOWSHIP ?

The Caring Committee has organized a group of volunteer drivers to help folks get to our Sunday morning services. Contact Kathleen Oldfather at 537-3738 or kjoldfather@gmail.com

Administrator's Schedule

In April, Susan Turner will be available in the Fellowship office on:

- Tuesday, April 1 - 12 to 5 pm
- Thursday, April 3 - 12 to 5 pm
- Monday, April 7 - 3 to 5 pm
- Tuesday, April 8 - 4 to 7 pm
- Thursday, April 10 - 12 to 5 pm
- Monday, April 14 - 3 to 5 pm
- Tuesday, April 15 - 12 to 5 pm
- Thursday, April 17 - 12 to 5 pm
- Thursday, April 24 - 12 to 5 pm
- Saturday, April 26 - 11 am to 6 pm
- Monday, April 28 - 3 to 5 pm
- Tuesday, April 29 - 12 to 5 pm

Call Susan at 537-2349 during office hours, or drop by the office. She may be reached at other times by email at office@uufm.net

HELPFUL INFORMATION FOR MEMBERS AND FRIENDS

Contact Fellowship administrator Susan Turner at 539-3272 or office@uufm.net to **UPDATE YOUR MAILING, PHONE, or EMAIL** information, or to **CANCEL YOUR SUBSCRIPTION** to this newsletter. Members and friends may also reach Susan during her posted office hours (*seen at bottom left*) at 537-2349.

If you have been considering **BECOMING A MEMBER** of UUFM, please ask our Welcoming and Membership Committee chair Shirley Hobrock at 776-3175 or welcome@uufm.net, or Rev Michael Nelson at 537-2349 or minister@uufm.net, for information and assistance.

Fellowship members may receive **UU WORLD MAGAZINE**, without cost. An audio version of *UU World* is available for those with vision or reading difficulties. Subscribe by contacting Susan Turner at 537-2349 or office@uufm.net. Read *UU World* online at www.uuworld.org

Join in discussions of interest; receive information on community events, and last minute updates and announcements on our UUFM **EMAIL LIST**. Contact list moderator Ruth Welti at welti@ksu.edu to subscribe.

Consider the convenience of **ELECTRONIC GIVING**. UUFM relies on the financial support of our congregation and electronic contributions offer a simple and easy way to give on a regular basis. For details, contact Fellowship bookkeeper Sandy Nelson at sandralounelson@yahoo.com or 341-0135, or pick up literature and a form from the information carousel in the Inez Alsop room at the Fellowship. *Thank you!*

SUNDAY ANNOUNCEMENTS

Please contact fellowship administrator Susan Turner at 537-2349 or office@uufm.net, **NO LATER THAN WEDNESDAY EVENING** with announcements and information for inclusion in the Sunday morning order of service bulletin.

CARING FOR MEMBERS AND FRIENDS

If you need a ride or could use a hand, or if you know members or friends who are experiencing life challenges and would appreciate assistance, please let our Caring Committee know. Contact Caring Committee chair Kathleen Oldfather at 537-3738 or caring@uufm.net, or let us know at 537-2349 or office@uufm.net

BUILDING USE AND SCHEDULING

Please check with Susan Turner to be sure your desired date is available before finalizing plans for any use of the Fellowship building, including **COMMITTEE MEETINGS**, Fellowship activities, or private events that will be held in the Fellowship building. To confirm building availability and schedule your activity, or for more information, contact Sue at 537-2349 or office@uufm.net.

MAY NEWSLETTER DEADLINE

The deadline for submissions to the April edition of *The UUFM Voice* is Tuesday, **APRIL 15**. *Committee chairs and activity organizers*, please let Susan know about your activities and volunteer needs. Contact Susan Turner at 539-3272 or office@uufm.net

Calendar

<<		Apr 2014					>>	
SUN	MON	TUE	WED	THU	FRI	SAT		
30 Singers rehearse 9:00-10:30 am Empowering Youth 10:45-12:00 pm	31 Women's Coffee 9:30-11:00 am Susan Turner 3:00-5:00 pm	1 Susan Turner 12:00-5:00 pm Rev Michael Nelson 3:00-5:00 pm Sandy Nelson 3:30-4:30 pm	2 Men's Lunch 12:00-1:15 pm Rev Michael Nelson 5:00-7:00 pm AWED Dinner 6:00-9:00 pm The New Jim Crow 7:00-8:30 pm	3 Women's Coffee 9:30-11:00 am Susan Turner 12:00-5:00 pm Sandy Nelson 3:30-4:30 pm	4 Happy Kitchen 7:30-9:00 am Parent's Night Out 6:30-9:30 pm	5 MAPJ Potluck / Program 5:30-9:00 pm		
6 Singers rehearse 9:00-10:30 am Welcome Breakfast 9:00-10:30 am The Little Universe 10:45-12:00 pm Helping Hands 11:15-11:15 am	7 Women's Coffee 9:30-11:00 am Susan Turner 3:00-5:00 pm	8 Sandy Nelson 3:30-4:30 pm Susan Turner 4:00-7:00 pm Rev Michael Nelson 5:00-7:00 pm Board Mtg 7:00-9:00 pm	9 Women's Lunch 11:30-1:00 pm Men's Lunch 12:00-1:15 pm Rev Michael Nelson 5:00-7:00 pm The New Jim Crow 7:00-8:30 pm	10 Women's Coffee 9:30-11:00 am Campus Lunch 12:00-1:00 pm Susan Turner 12:00-5:00 pm Sandy Nelson 3:30-4:30 pm	11 Drum Circle 7:00-10:00 pm	12 Pagan Circle - Full Moon 6:00-10:00 pm		
13 Hunger for Justice 10:45-12:00 pm	14 Women's Coffee 9:30-11:00 am Susan Turner 3:00-5:00 pm	15 Susan Turner 12:00-5:00 pm Sandy Nelson 3:30-4:30 pm	16 Men's Lunch 12:00-1:15 pm Rev Michael Nelson 5:00-7:00 pm The New Jim Crow 7:00-8:30 pm	17 Women's Coffee 9:30-11:00 am Susan Turner 12:00-5:00 pm Sandy Nelson 3:30-4:30 pm	18 Happy Kitchen 7:30-9:00 am	19 Pagan Circle - Handfasting 6:00-10:00 pm		
20 Singers rehearse 9:00-10:30 am Restore the Love of Living 10:45-12:00 pm Easter Brunch / Egg Hunt 12:15-2:00 pm	21 Women's Coffee 9:30-11:00 am	22 Rev Michael Nelson 3:00-5:00 pm Sandy Nelson 3:30-4:30 pm	23 Men's Lunch 12:00-1:15 pm Meadowlark Hills service 3:00-4:30 pm Rev Michael Nelson 5:00-7:00 pm	24 Women's Coffee 9:30-11:00 am Susan Turner 12:00-5:00 pm Sandy Nelson 3:30-4:30 pm	25	26 Susan Turner 11:00-6:00 pm Pagan Circle - Beltane 6:00-10:00 pm		
27 (Wo)Man the Pattern Seeker 10:45-12:00 pm Annual Meeting 12:15-2:00 pm	28 Women's Coffee 9:30-11:00 am Susan Turner 3:00-5:00 pm	29 Susan Turner 12:00-5:00 pm Sandy Nelson 3:30-4:30 pm	30 Men's Lunch 12:00-1:15 pm Book Discussion group 7:00-9:00 pm	1 Women's Coffee 9:30-11:00 am Susan Turner 12:00-5:00 pm Sandy Nelson 3:30-4:30 pm	2 Happy Kitchen 7:30-9:00 am Parent's Night Out 6:30-9:30 pm	3 Michael and Charles' KS Wedding 3:00-7:00 pm		

Please contact Sue Turner (office@uufm.net) or Dan Swenson (web@uufm.net) to have an event added to the calendar.