



THE  
**UUFM VOICE**

**JANUARY 2015**  
VOLUME 53, ISSUE 8

**JANUARY 2015 PROGRAMS**

**JANUARY 4 "LAST YEAR'S NOTABLE DEATHS"**

Fellowship members will discuss the lives of women and men who died last year. Michael Oldfather, 537-3738 or mou812@ksu.edu, will coordinate the service.

**JANUARY 11 "BUILDING CONFIDENCE THROUGH COMMITMENT"**

What are the qualities of good leadership each of us can learn? The Board of our Fellowship will share what motivates them to serve. The support they provide one another, their sense of humor, and devotion to a vision that asks us to be bold models of love moves us forward. Come and be inspired. Contact/convener is Michael Nelson at 537-2349 or revmichael@uufm.net.

**JANUARY 18 "A DEEPLY ROOTED DREAM"**

John Exdell and Rev Michael Nelson reflect, "Martin Luther King's power to inspire others to labor for racial and economic justice rises from his deep religious convictions that each human has a right to be free. While the civil-rights movement accomplished a great deal, we find ourselves in a time of great racial tension. How can the Fellowship understand its role in helping to carry the dream of equality forward?" Contact Michael at 537-2349 or revmichael@uufm.net.

*Following the service on January 18, members are encouraged to attend a **CONGREGATIONAL MEETING**. We will discuss and make decisions on our future options, in light of Rev Michael Nelson's announced retirement, in May 2016. Learn more in "Words from Our Chair," on page 6 of this newsletter*

**JANUARY 25 "EATING THE END OF THE WORLD"**

Our guest speaker will be the Rev Dr Holly Horn. Rev Horn reflects, "When will the world end? This sermon explores an eschatology of place, drawing insights from a theology of food." Rev Horn, PhD is a graduate of Starr King School for the Ministry and the Graduate Theological Union. She has served Unitarian Universalist congregations in California, Pennsylvania, and New York. Currently, she lives in Overland Park, Kansas, where her husband is the Interim Minister at Shawnee Mission UU Church. She is researching and writing a theology of food. Contact/convener is Michael Nelson at 537-2349 or revmichael@uufm.net.

**UU FELLOWSHIP OF MANHATTAN**

PO Box 910  
Manhattan, KS 66505  
(785) 537-2349  
office@uufm.net / [www.uufm.net](http://www.uufm.net)

**KATHLEEN TANONA**, Exec Board Chair  
(785) 537-6208  
chair@uufm.net

**REV MICHAEL NELSON**, minister  
revmichael@uufm.net

**SANDY NELSON**, Director of Religious Ed  
DRE@uufm.net

**SUNDAY SERVICES** begin at **10:45 AM**  
at **481 ZEANDALE ROAD**

**INSIDE THIS ISSUE** **PAGE**

Michael's Musings .....	2
Michael Nelson's schedule .....	2
Religious Ed / Youth / Families .....	3
Events and Activities .....	4
<i>WinterFest Dinner</i> .....	4
<i>Welcoming Soup Social</i> .....	4
Meadowlark Service .....	4
Social Action / Helping Hands .....	5
<i>Youth Social Action Opportunities</i> ...	5
From Our Chair / UUFM Cookbook ..	6
<i>Congregational Meeting</i> .....	6
<i>UU College of Social Justice</i> .....	7
Getting Connected / All About Us ...	7
Coffee and Greeting Teams .....	8
Admin Schedule / Subscriptions .....	8
January Calendar .....	9

**COMING UP AT UUFM -**

Members and involved friends are urged to attend a **CONGREGATIONAL MEETING** on Sunday, JANUARY 18, to discuss future plans for ministerial leadership. Learn more on page 6.

New members and friends are invited to a get-acquainted **SOUP SOCIAL** on Thursday evening, JANUARY 8, at the home of Brice and Shirley Hobrock. Learn more on page 4.



**UUFM is a  
WELCOMING CONGREGATION**

Learn more about the Welcoming Congregation initiative at  
[www.uua.org/visitors/justicediversity/6252.shtml](http://www.uua.org/visitors/justicediversity/6252.shtml)

The wonder of seeing all the candles shining in the darkness at our Christmas Eve service will lift me into this New Year with gratitude for the goodness that shines out from the life of our Fellowship. My mother felt that the service was "homey" and was pleased to feel at home--inspired and glad. She carries the glow of all the gathered candles in her heart. This helps her to feel less isolated from the human family. Her increasing frailty sometimes makes her less able to maintain and build new connections with society. Experiencing wonder links the old and the young.

The magic of fire, how it illuminates the primal, brings us inside the sun. Once inside, I can feel the warmth of love radiate out. This is what makes us go round and round. The orbit of our individual lives that from some magnificent perspective, becomes inseparable from all the other lives. Essential truth sparks and we can see the trajectory of human history. Here we are, each of us an integral part of the mystery and all those who seek specific, broad and profound understanding of what it means to be here. This is how magic works. It lets you see, without necessarily seeing all the dots, how the little connections are part of infinity. You feel it in these small and glorious moments.

In the New Year, may we have many visionary moments when the world makes sense and we can see how we are a part of the whole. May this coherence bring us the courage we need to build the bridges across the rivers of indifference; the indifference that makes oppression, violence, and racial injustice so prevalent in our society. May it also bring the laughter we need to keep our spirits fresh and vital. May there be many moments of play to help us remember what it means to be fully human.

May this be a daring and adventurous year for the Fellowship. May there be plenty of peace to help us to appreciate the quiet moments when awe has a chance to amaze. Let us amaze one another!

Happy New Year! *Michael*



GATHERED IN THE CANDLELIGHT AT OUR CHRISTMAS EVE SERVICE,  
DECEMBER 24, 2014.

*IMAGE COURTESY OF GENE SIEVERS.*

#### **REV MICHAEL NELSON'S SCHEDULE**

This month, Michael Nelson will be available in the Fellowship office on:

Tuesday, January 6 - 3 to 5 pm  
Wednesday, January 7 - 4 to 6 pm  
Tuesday, January 13 - 3 to 5 pm  
Thursday, January 15 - 3 to 5 pm

During office hours, contact Michael at the Fellowship at 537-2349. To arrange meetings at other times, please call or email [revmichael@uufm.net](mailto:revmichael@uufm.net)

# RELIGIOUS EDUCATION

---

## RE NEWS

---

Happy New Year!

In addition to our regular Sunday classes, in the new year we'll be offering Our Whole Lives (OWL) classes for 4-6 grade and 7-9 grade students. If you happen to have a neighbor, friend, or co-worker who has a child who may benefit from the OWL program, please let me or Molly [McGaughey] know so we can reach out to them. OWL is a wonderful curriculum and promises to be an exceptional learning experience for our kids. There will be informational meetings throughout January each Sunday after the service. If you're unfamiliar with the curriculum or have questions of any kind, please drop by the Mercury room for one of these informal meetings.

Social action: At the end of November, our students collected food for the Breadbasket. They've been collecting aluminum cans in the Jupiter room for recycling and will be donating the funds received, but they're looking for some more social action activities. Do you have some ideas? Do you have a few hours that you could offer guidance? I'd love to hear from you.

*Sandy*



RONAN, LILY, AND ROSE  
STAND NEXT TO THE SCALE AT  
THE FLINT HILLS BREADBASKET.  
FOOD COLLECTED DURING THE  
'JELLYBEAN' SERVICE,  
ON NOVEMBER 30,  
WEIGHED IN AT 80 POUNDS!

### DRE'S SCHEDULE

In January, Sandy will be available in the Fellowship office on **TUESDAYS** and **THURSDAYS**, from 3:30 to 4:30 pm. *Learn about all family and youth activities at the Fellowship from Director of Religious Education Sandy Nelson at 341-0135 or DRE@uufm.net.*

## JANUARY FAMILY FUN

---

Join Fellowship members, friends, families, and guests on Saturday, **JANUARY 31**, for our annual **WINTERFEST** Dinner. All ages are invited for tapas, dancing, and fellowship. Tickets will be sold before and after services on January 12, 19, and 26. Cost is \$7/adults, \$3/youth ages 6-12; and free/kids age 5 and under. Festivities will begin with drinks and socializing at 5:30 pm, and food will be served at 6 pm.

Learn more from Jane Pelletier at 537-0954 or mjanepelletier@gmail.com, or Courtney Albin at 317-8157 or courtney.albin@gmail.com

## AN OPPORTUNITY FOR TEENS AND YOUNG ADULTS

---

The UUFM Social Action Committee would like to support a young person traveling to an experience in other cultures, leadership training, actively advocating for social justice, or participating in a humanitarian project. Learn more on page 5, or contact Anne Cowan at 537-2025 or socialaction@uufm.net.

## PARENT NIGHT OUT

---

Bring the kids for Parent Night Out on the first Friday of each month. On **JANUARY 2**, drop the kids off at 6:30 and pick them up at 9:30 pm. *Just a reminder: parents must come inside to drop off and pick up child(ren).* We'll have a snack and activities, and watch a movie. Suggested contribution is \$5 per child, to help cover expenses. Please RSVP to let us know your child(ren) will be attending by Thursday, January 1. Learn more from Sandy Nelson at 341-0135 or dre@uufm.net.

## THE SEVEN UU PRINCIPLES (TO THE TUNE OF DOE A DEER)

---

*ONE, EACH PERSON IS WORTHWHILE.  
TWO, BE KIND IN ALL YOU DO.  
THREE, WE HELP EACH OTHER LEARN.  
FOUR, AND SEARCH FOR WHAT IS TRUE.  
FIVE, ALL PEOPLE HAVE A SAY.  
SIX, WORK FOR A PEACEFUL WORLD.  
SEVEN, THE WEB OF LIFE'S THE WAY.  
AND THAT BRINGS US BACK TO ME AND YOU  
AND YOU AND YOU AND YOU AND YOU AND YOU ...*

## **ACTIVITIES AND EVENTS** - *events are open to all interested people ...*

---

The **WOMEN'S COFFEE** group meets EVERY MONDAY and THURSDAY at 9:30 am, at McDonald's in Westloop. Join us for morning coffee and conversation. Contact Barbara Hacker at 587-8002 or barbaradhacker@yahoo.com.

Don't miss **BEER AND THEOLOGY**, on the first Friday of the month. This month, we meet on JANUARY 2, at 7 pm, at Auntie Mae's in Aggieville for fun and fellowship. Learn more from Jessica Sievers at 532-8471 or sieversj@gmail.com.

The **MEN'S LUNCH** group meets EVERY WEDNESDAY, at 12 noon, in the Jupiter room (large RE room). Bring a desire for spirited conversation and a sack lunch for yourself. Learn more from Jack Warren at 539-4073 or jomega@ksu.edu.

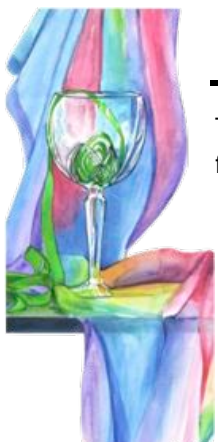
Join us for our monthly **ACTION WEDNESDAY (AWed) POTLUCK DINNER** on Wednesday, JANUARY 7. Dinner begins at 6 pm, and committee meetings and social activities follow at 7 pm. Childcare is provided, and there are activities planned for all ages. Learn more from Katie Kingery-Page at 341-5650 or chairelect@uufm.net.

Newer members and friends are invited to a get-acquainted **SOUP SOCIAL** on Thursday, JANUARY 8, from 5:30 to 7:30 pm, at the home of Brice and Shirley Hobrock, 4009 Snowy Reach, in Manhattan. This is a wonderful way to meet others new to the Fellowship. *Please RSVP* to Shirley at 776-3175 or shirleyjhobrock@hotmail.com.

The UUFM **DRUM CIRCLE** gathers at 7 pm, on Friday, JANUARY 9, at the Fellowship. UUFM members, friends, and the wider community, those of all ages, and experienced or beginning drummers are welcome. Learn more from Pat Embers at 539-2819 or embers1@cox.net.

The **WOMEN'S LUNCH** group meets Wednesday, JANUARY 14, at 11:30 am, at Carlos O'Kelly's, in the Manhattan Town Center mall. Join us for lively discussion and great company. Learn more from Harriette Janke at 539-0865 or ahjanke@cox.net.

The UUFM **BOOK DISCUSSION GROUP** meets on Wednesday, JANUARY 28, at 7 pm, at the Hacker residence. We'll be discussing *The Aviator's Wife*, by Melanie Benjamin. Learn more from Lorrie Cross at 539-7883 or lmcross@kansas.net, or Barbara Hacker at 587-8002 or barbaradhacker@yahoo.com.



### **WINTERFEST DINNER**

---

The pleasure of your presence is requested Saturday, **JANUARY 31**, for UUFM's annual WinterFest dinner. Social hour and drinks begin at 5:30 pm. Food will be served at 6 pm. Bring the whole family, and join us for tapas, dancing, and fellowship. *Tickets will be available before and after the morning service on Sunday, January 11, 18, and 25.* Cost is \$7/adults; \$3/youth ages 6 thru 12; and free/children age 5 and younger. Learn more from Jane Pelletier at 537-0954 or mjanepelletier@gmail.com, or Courtney Albin at 317-8157 or courtney.albin@gmail.com

### **MEADOWLARK SERVICE**

---

Join us on Wednesday, **JANUARY 28**, at 3 pm, in the Manhattan Room, in Meadowlark Hill's main building. This month's service will be organized by Michael Oldfather. Contact Michael at 537-3739 or mou812@ksu.edu.

### **UUFM SINGERS**

---

The UUFM Singers rehearse at 9 am, on Sunday, **JANUARY 18**. Learn more about all musical opportunities at the Fellowship from Music Committee chair Michael Oldfather at 537-3738 or mou812@ksu.edu.

### **UU CAMPUS LUNCH**

---

UUFM members, friends and guests meet on the second Thursday of each month, at 12 noon, in the K-State Student Union's Bluemont Buffet. Join us on **JANUARY 8**, for a shared meal and invigorating conversation. Invite your friends! Learn more from Molly McGaughey at 776-4543 or molly\_mcgaughey@hotmail.com.

# SOCIAL ACTION AT UUFM

## VOLUNTEER OPPORTUNITIES

There are always openings for volunteers on our Sunday morning **COFFEE AND GREETING TEAMS**. New members and friends find this is a great way to get acquainted, and it's an easy way to give to the Fellowship with a minimal investment of time--only three or four Sundays each year. Learn more from Elke Lorenz, 218-4014 or [ellorenz@uufm.net](mailto:ellorenz@uufm.net)

This month, Fellowship volunteers prepare and serve **HAPPY KITCHEN COMMUNITY BREAKFAST** on Friday, JANUARY 9 and 23, from 7 to 8:30 am, at St Paul's Episcopal Church. *Occasional volunteers are needed.* Breakfast is free and open to the community, providing a good meal for many who might otherwise go without. All are invited, and freewill donations help us continue this service. Learn more from Jennifer Bryan at 537-0333 or [snowbird@violinifer.com](mailto:snowbird@violinifer.com)

## MANHATTAN EMERGENCY SHELTER

Donate your aluminum cans to benefit the Manhattan Emergency Shelter, Inc, at Howie's Recycling, 625 South 10th Street. Funds generated from recycled aluminum will be placed in a designated account for MESI.



## CASA SPRING TRAINING

*There's a child waiting for your voice!* Choose to be the difference between abuse and hope. Become a Court-Appointed Special Advocate (CASA). CASA volunteers advocate for abused and neglected children in the court system. Volunteers complete 3 hours of online assignments and attend 3 hours of in-person training over five weeks starting Monday, February 2. There are only 15 spaces available! To reserve your space, or learn more, contact CASA Resource Advocate Supervisor Bridget Larkin at [blarkin@rileycountyks.gov](mailto:blarkin@rileycountyks.gov) or 537-6367, or visit [www.sunflowercasa.org](http://www.sunflowercasa.org). Deadline for registration is January 19!

## HELPING HANDS SUNDAY

Each month on the second Sunday, our Social Action Committee selects a non-profit agency or organization to receive the morning offering. On Sunday, JANUARY 11, Helping Hands contributions will be collected for an organization selected by Rev Michael Nelson. Please watch weekly email announcements and Sunday bulletins for further information.

On December 14, Fellowship members and friends contributed funds to purchase both fun and practical holiday gifts for an adopted family at the Manhattan Emergency Shelter. *Thank you all for your generosity!* Learn more from Helping Hands coordinator Dixie Moreau at (785) 477-8188 or [dixie.moreau53@att.net](mailto:dixie.moreau53@att.net).

## FAIR TRADE COFFEE, TEA, AND CHOCOLATE

Equal Exchange whole bean, ground, and decaf coffees, as well as chocolate and tea are available for purchase. To learn more, or to purchase fair trade products, see Anne Cowan following Sunday morning services at the Fair Trade display in the Fellowship's narthex, or contact her at 537-2025 or [socialaction@uufm.net](mailto:socialaction@uufm.net)



*Equal Exchange works in collaboration with the Unitarian Universalist Service Committee. They source goods directly from farmer cooperatives, following the standards and principles of fair trade on 100 percent of its products. This ensures that farmers earn a fair price for their crops, allowing them to better meet their families' basic needs for food, education, health care, and long-term security.*

## AN OPPORTUNITY FOR TEENS AND YOUNG ADULTS

The UUFM Social Action Committee is offering support to a young person from our Fellowship, who would like to travel to an experience in another culture, attend leadership training, actively advocate for social justice, or be part of a humanitarian project.

Social Action Committee chair Anne Cowan has information on a delegation being formed by the Manhattan Alliance for Peace and Justice, which will be visiting the MAPJ sister city of El Papaturo, El Salvador. The trip will take place during Spring break or over the summer, for 7 to 10 days, traveling with other justice advocates.

Older teens or young adults who are interested, or would like more information may contact Anne at 537-2025 or [socialaction@uufm.net](mailto:socialaction@uufm.net).

The Committee hopes to hear about other experiences that Fellowship young people would like to participate in. *[Read about Unitarian Universalist College of Social Justice service-learning experiences on page 7 of this newsletter.]* Let us know if you could use some help and support.

## **CONGREGATIONAL MEETING**

Following the morning service on Sunday, **JANUARY 18**, we encourage all Fellowship members and active friends to join us for an in-depth discussion of our future ministerial leadership options. With the announcement of Reverend Michael Nelson's coming retirement, in May 2016, the Fellowship will be asked to make decisions regarding our future direction and leadership. Please review "Words from Our Chair," seen at right, and in the December 2014 edition of *The UUFM Voice* ([uufm.net/newsletters/UUFMNews2014-12.pdf](http://uufm.net/newsletters/UUFMNews2014-12.pdf)). Take a moment to familiarize yourself with our options, and join us to *make your voice heard*. Learn more from UUFM Board Chair Kathleen Tanona at 537-6208 or [chair@uufm.net](mailto:chair@uufm.net), or talk to any Board member (Kathleen, Katie Kingery-Page, Betty Banner, Nathan Albin, Mark Clarke, Jane Pelletier, and Tom Phillips) before or after Sunday morning services.

## **COOKIN' WITH UUFM**

*We need your help* to create a UUFM Cookbook--***Cookin' with UUFM***--filled with Fellowship recipes ranging from old favorites, like traditional UU Easter Eggs and fruit cup, to modern classics. All kinds of recipes are needed, including simple, Vegan, vegetarian, gluten-free, comfort foods, kids in the kitchen--anything you enjoy making, and others enjoy eating. When completed, the book will be available for purchase, with funds raised benefiting the UUFM General Operations fund.

To share your recipe(s), contact Susan Turner at 537-2349 or [office@uufm.net](mailto:office@uufm.net)

## **ANOTHER SUCCESSFUL CRAFT AND BAKE SALE**

2014 UUFM Craft and Bake Sale coordinator Betty Banner reports the sale, held on December 14, raised \$2,005.75 benefiting the Fellowship's General Operations account. *Thank you, everyone for your enthusiastic support of our community!*

## **WORDS FROM OUR CHAIR**

*Happy New Year!*

We have an important decision to make in regards to hiring a new minister. We will be having a *congregational meeting on January 18th*, after the Sunday service, to decide which path to choose. In last month's newsletter [[uufm.net/newsletters/UUFMNews2014-12.pdf](http://uufm.net/newsletters/UUFMNews2014-12.pdf)], I outlined Interim and Developmental Ministry. Thanks for all of you that have already participated in meetings and I hope to see the rest of you in early January. I would encourage you all to take some time to get more information about minister transitions from the UUA [[www.uua.org](http://www.uua.org)] and MidAmerica Region [[www.midamerica.org](http://www.midamerica.org)] websites. I am currently in the process of compiling information from all of the meetings we have had at UUFM, conversations from other churches that have hired Developmental Ministers and correspondence/conversations with UUA and MidAmerica officials. I will be disseminating this information to our group as soon as completed.

The January Board meeting will be a mini-visioning process to try and come up with some new goals for our fellowship to look towards in the coming months/years. Drew Vennum, Sylvia Beeman and Molly McGaughey have been invited to participate. If you recall, these three dedicated members took all of the information from our visioning workshop in June of 2013 and sifted through to create our Vision Statement. This meeting is not about the new minister search--although we are having the meeting because of the process of finding a new minister. This is about US as a group, what do WE value and how do WE share our gifts. So please, let me know if you have anything to share. Call me, email me or stop me in the narthex. I would love to hear your voice!

*In Faith, Kathleen*

*Talk to UUFM Board Chair Kathleen Tanona before or after Sunday services, or contact her at 537-6208 or [chair@uufm.net](mailto:chair@uufm.net) with your inspirations, questions, and concerns, or chat with any Board member. We want to hear from you!*

Over the years, thousands of people have joined UUSC (Unitarian Universalist Service Committee) on short-term volunteer trips to put their values into action and lend their hands to vital work that advances human rights. Today, UUSC collaborates with the Unitarian Universalist Association to continue this history of service learning through the Unitarian Universalist College of Social Justice (UUCSJ). With a broad range of programs for current leaders and future activists of any age, UUCSJ increases the capacity of Unitarian Universalists to catalyze justice. In addition to service-learning experiences, UUCSJ also offers other justice-oriented educational opportunities, including youth justice trainings and young adult internships. Visit [uucsj.org](http://uucsj.org) to learn more, register for programs, and support this exciting initiative!

*Older teens and young adults interested in participating in a UUCSJ service-learning project should contact Social Action chair Anne Cowan at 537-2025 or [socialaction@uufm.net](mailto:socialaction@uufm.net), to learn about support that may be available.*

### **ALL ABOUT US**

---

Welcome our new member, **SARAH LOTT**. Born in Fairfax, Virginia, Sarah graduated from James Madison University with a degree in biotechnology. She came to Manhattan with her fiancé, Alex Stinson. She was raised Catholic, but was always Universalist in her thinking. Sarah had been questioning her faith since high school and took a comparative religion class at university. The Unitarians seemed "A great way to continue exploration." She also believes the environment and the care of it is a spiritual support. The Fellowship offered Sarah and Alex something to share and a community as they looked toward building a family together. Alex discovered our Fellowship as he biked this direction and shared the information with Sarah. (Thanks, Alex!) Sarah searched the website, she describes as, "Great! And let us know what we were getting into." Sarah enjoys making home cleaners and cosmetics with the goal of being sustainable, local, with little impact on the environment. She dreams of buying land and an orchard where she can grow her own food. We hope it can be somewhere nearby! *Welcome, Sarah.*

Word has been received of the passing of **LES FRAZIER**, on December 21. Les and his wife Evelyn (who passed in 2007) were long-time members and dedicated supporters of our community. Les requested no memorial service. His strong presence will be missed.

*Please send your milestones, significant events, or news to Caring chair Linda Kroeger at 565-9645 or [caring@uufm.net](mailto:caring@uufm.net). We can't share it if we don't know!*

### **GETTING CONNECTED AT UUFM**

---

**COFFEE AND CONVERSATIONS--EXTENDED!** Want to continue the conversation about a Sunday service? Have more to discuss? Join the new UUFM Coffee and Conversations FaceBook group for UUFM members (and active friends) for just this purpose. *The group is invitation only*, so your posts will be visible only to invited members. Ask Aimee Fowler for an invitation at [aimee.mae@gmail.com](mailto:aimee.mae@gmail.com).

Fellowship members may receive a hard copy of **UU WORLD MAGAZINE**, connecting us to projects, initiatives, and events in the wider UU world. The magazine is also *available in a digital edition*, accessible to everyone, that can be viewed on your tablet or in any browser. Visit [www.uuworld.org](http://www.uuworld.org) to download the *UU World app*, or contact Susan Turner at 537-2349 or [office@uufm.net](mailto:office@uufm.net), to receive a members' hard copy in the mail.

The Fellowship maintains an **EMAIL LIST**, for last minute program announcements, volunteer opportunities, details of community actions and events, and other information, which may be posted by any member. The list averages about two messages a day. You can set your account to receive each message individually; or grouped into one daily digest; or choose to receive nothing in your email box, and sign in to website to check postings. Contact Susan Turner at 537-2349 or [office@uufm.net](mailto:office@uufm.net), to receive your invitation.

**Are you on the UUFM Mailing List?** If you're new to the Fellowship, sign our visitors' book (ask anyone), and circle "Y" (Yes) in the "Add to Mail List?" column. At the beginning of each month, you'll receive our newsletter, *The UUFM Voice*. We also send out one email message each week with upcoming activities, events, and announcements. Keep up with everything that's happening at UUFM. If you aren't receiving the newsletter or weekly announcements, contact Susan Turner at 537-2349 or [office@uufm.net](mailto:office@uufm.net).



## COFFEE AND GREETING TEAMS

- Jan 4: Sylvia and Dick Beeman, and Ken and Pat Embers
- Jan 11: Anne Marchin, Jim Shanteau, and Jen and Matt Campbell
- Jan 18: Cybil Perkins, Dave Lambert, Sarah Hoyt, and Ana Franklin
- Jan 25: Kristin Corwin, Mark Clarke, and Gene Sievers

*THANK YOU* to all of our coffee and greeting team volunteers. Serving on a Coffee and Greeting team is an easy way to give to the Fellowship, with a minimal investment of your time, just three or four Sundays each year. Learn more from Coffee and Greeting coordinator Elke Lorenz at 218-4014 or [ellorenz@uufm.net](mailto:ellorenz@uufm.net)

### NEED A RIDE TO THE FELLOWSHIP?

The Caring Committee has organized a group of volunteer drivers to help folks get to our Sunday morning services. Contact Linda Kroeger at 565-9645 or [caring@uufm.net](mailto:caring@uufm.net).

### Administrator's Schedule

In January, Susan Turner will be available in the Fellowship office on:

- Monday, January 5 - 3 to 5 pm
- Tuesday, January 6 - 12 to 5 pm
- Thursday, January 8 - 12 to 5 pm
- Monday, January 12 - 3 to 5 pm
- Tuesday, January 13 - 4 to 7 pm
- Thursday, January 15 - 12 to 5 pm
- Thursday, January 22 - 12 to 5 pm
- Saturday, January 24 - 11 am to 6 pm
- Monday, January 26 - 3 to 5 pm
- Tuesday, January 27 - 12 to 5 pm
- Thursday, January 29 - 12 to 5 pm

Call Susan at 537-2349 during office hours, or drop by the office. She may be reached at anytime at [office@uufm.net](mailto:office@uufm.net)

## HELPFUL INFORMATION FOR MEMBERS AND FRIENDS

Contact Fellowship administrator Susan Turner at 539-3272 or [office@uufm.net](mailto:office@uufm.net) to **UPDATE YOUR MAILING, PHONE, or EMAIL** information, or to **CANCEL YOUR SUBSCRIPTION** to this newsletter. Members and friends may also reach Susan during her posted office hours (*seen at bottom left*) at 537-2349.

If you have been considering **BECOMING A MEMBER** of UUFM, please ask our Welcoming and Membership Committee chair Shirley Hobrock at 776-3175 or [welcome@uufm.net](mailto:welcome@uufm.net), or Rev Michael Nelson at 537-2349 or [revmichael@uufm.net](mailto:revmichael@uufm.net), for information and assistance.

Fellowship members may receive **UU WORLD MAGAZINE** by mail, and the magazine is *now also available in a digital edition* that can be read on your tablet or in any browser. Visit [www.uuworld.org](http://www.uuworld.org), or contact Susan Turner at 537-2349 or [office@uufm.net](mailto:office@uufm.net), to receive your quarterly copy.

Join in discussions of interest; receive information on community events, and last minute updates and announcements on our UUFM **EMAIL LIST**. Contact list moderator Ruth Welti at [welti@ksu.edu](mailto:welti@ksu.edu) to subscribe.

Consider the convenience of **ELECTRONIC GIVING**. UUFM relies on the financial support of our congregation and electronic contributions offer a simple and easy way to give on a regular basis. For details, contact Fellowship bookkeeper Sandy Nelson at [sandralounelson@yahoo.com](mailto:sandralounelson@yahoo.com) or 341-0135, or pick up literature and a form from the information carousel in the Inez Alsop room at the Fellowship. *Thank you for your support!*

## SUNDAY ANNOUNCEMENTS

Please contact fellowship administrator Susan Turner at 537-2349 or [office@uufm.net](mailto:office@uufm.net), **NO LATER THAN WEDNESDAY EVENING** with announcements and information for inclusion in the Sunday morning order of service bulletin.

## CARING FOR MEMBERS AND FRIENDS

If you need a ride or could use a hand, or if you know members or friends who are experiencing life challenges and would appreciate assistance, please let our Caring Committee know. Contact Caring Committee chair Linda Kroeger at 565-9645 or [caring@uufm.net](mailto:caring@uufm.net), or let us know at 537-2349 or [office@uufm.net](mailto:office@uufm.net)

## BUILDING USE AND SCHEDULING

Please check with Susan Turner to be sure your desired date is available before finalizing plans for any use of the Fellowship building, including **COMMITTEE MEETINGS**, Fellowship activities, or private events that will be held in the Fellowship building. To confirm building availability and schedule your activity, or for more information, contact Sue at 537-2349 or [office@uufm.net](mailto:office@uufm.net).

## FEBRUARY NEWSLETTER DEADLINE

The deadline for submissions to the February edition of *The UUFM Voice* is Thursday, **JANUARY 15**. *Committee chairs and activity organizers*, please let Susan know about your activities and volunteer needs. Contact Susan Turner at 539-3272 or [office@uufm.net](mailto:office@uufm.net)



**Calendar**

<<	Jan 2015						>>
SUN	MON	TUE	WED	THU	FRI	SAT	
28 <u>Personal Spiritual Journeys</u> 10:45-12:00 pm	29 <u>Women's Coffee</u> 9:30-11:00 am <u>Susan Turner</u> 3:00-5:00 pm	30 <u>Susan Turner</u> 12:00-5:00 pm <u>Michael Nelson</u> 3:00-5:00 pm <u>Sandy Nelson</u> 3:30-4:30 pm	31 <u>Men's Lunch</u> 12:00-1:15 pm	1 <u>Women's Coffee</u> 9:30-11:00 am	2 <u>Parent Night Out</u> 6:30-9:30 pm <u>Beer and Theology</u> 7:00-10:00 pm	3	
4 <u>Notable Deaths - 2014</u> 10:45-12:00 pm	5 <u>Women's Coffee</u> 9:30-11:00 am <u>Susan Turner</u> 3:00-5:00 pm	6 <u>Susan Turner</u> 12:00-5:00 pm <u>Michael Nelson</u> 3:00-5:00 pm <u>Sandy Nelson</u> 3:30-4:30 pm	7 <u>Men's Lunch</u> 12:00-1:15 pm <u>Michael Nelson</u> 4:00-6:00 pm <u>AWeD Pottluck</u> 6:00-9:00 pm	8 <u>Women's Coffee</u> 9:30-11:00 am <u>Campus Lunch</u> 12:00-1:00 pm <u>Susan Turner</u> 12:00-5:00 pm <u>Sandy Nelson</u> 3:30-4:30 pm <u>Soup Social</u> 5:30-7:30 pm	9 <u>Drum Circle</u> 7:00-10:00 pm	10	
11 <u>Confidence Through Commitment</u> 10:45-12:00 pm	12 <u>Women's Coffee</u> 9:30-11:00 am <u>Susan Turner</u> 3:00-5:00 pm	13 <u>Michael Nelson</u> 3:00-5:00 pm <u>Sandy Nelson</u> 3:30-4:30 pm <u>Susan Turner</u> 4:00-7:00 pm <u>Board Mtg</u> 7:00-9:00 pm	14 <u>Men's Lunch</u> 12:00-1:15 pm	15 <u>Women's Coffee</u> 9:30-11:00 am <u>Susan Turner</u> 12:00-5:00 pm <u>Michael Nelson</u> 3:00-5:00 pm <u>Sandy Nelson</u> 3:30-4:30 pm	16	17	
18 <u>Singers rehearse</u> 9:00-10:15 am <u>A Deeply Rooted Dream</u> 10:45-12:00 pm <u>Congregational Mtg</u> 12:15-1:30 pm	19 <u>Women's Coffee</u> 9:30-11:00 am	20 <u>Sandy Nelson</u> 3:30-4:30 pm	21 <u>Men's Lunch</u> 12:00-1:15 pm	22 <u>Women's Coffee</u> 9:30-11:00 am <u>Susan Turner</u> 12:00-5:00 pm <u>Sandy Nelson</u> 3:30-4:30 pm	23	24 <u>Susan Turner</u> 11:00-6:00 pm	
25 <u>Eating the End of the World</u> 10:45-12:00 pm	26 <u>Women's Coffee</u> 9:30-11:00 am <u>Susan Turner</u> 3:00-5:00 pm	27 <u>Susan Turner</u> 12:00-5:00 pm <u>Sandy Nelson</u> 3:30-4:30 pm	28 <u>Men's Lunch</u> 12:00-1:15 pm <u>Meadowlark Service</u> 3:00-4:00 pm <u>Book Discussion group</u> 7:00-9:00 pm	29 <u>Women's Coffee</u> 9:30-11:00 am <u>Susan Turner</u> 12:00-5:00 pm <u>Sandy Nelson</u> 3:30-4:30 pm	30	31 <u>WinterFest Dinner</u> 5:30-9:00 pm	

Please contact Sue Turner ([office@uufm.net](mailto:office@uufm.net)) or Mark Clarke ([web@uufm.net](mailto:web@uufm.net)) to have an event added to the calendar.