

WHAT DOES IT MEAN TO BE

A PEOPLE OF THRESHOLDS? (from *Soul Matters*, adapted for UUFM)

When encountering thresholds, we often talk as if our work is that of successfully “passing through” them. We speak of “making healthy transitions.” We seek out advice and support as we decide which thresholds to lean into and which to resist. The goal, it would seem, is figuring out how to travel *forward* in the *right* way.

But what if the true invitation of a threshold is not to successfully move from here to there, but instead to just sit and pause? What if we saw thresholds as resting places rather than as those moving walkways that transport us through airports? What if thresholds help us “become” by asking us to just “be” for a while? No moving. Just noticing and naming. Less traveling and more listening.

We find ourselves in a liminal time, a threshold time. We know where we have come from, and we know a pandemic threatens. Many of us fear to cross the threshold. We’re safe in our homes. Out there? Not so much.

And yet, as the Rev Sara LaWall writes, “A [threshold is] a space to imagine a new way, and new self. Not moving or pushing but sitting and cultivating ... [the goal] is to allow you space and time to reflect on your past, present, and future. To imagine a new beginning ...”

What if this time could be a time of imagining and naming in ways maybe more powerful than we usually assume. From the outside, it may seem that nothing has changed in our lives, and yet once that imagining takes shape in our minds and hearts, nothing is ever the same. The idea, the dream, the recognition suddenly takes on gravity. And that gravity creates an inevitability that transforms us, sometimes whether we like it or not.

Here’s how the writer Gary Zukav puts it, “At that moment [of realization], a threshold is crossed. What seemed unthinkable becomes thinkable ... Once that realization has emerged, you can either honor it or ignore it, but you cannot forget it. What has become known cannot become unknown again.”

There is, after all, no forgetting it. Only living it. And letting it live in us.



MAY 2020 SUNDAY SERVICES

OUR THEME IN MAY EXPLORES
"WHAT DOES IT MEAN TO BE A PEOPLE OF **THRESHOLDS**?"

MAY 3 "ON THE THRESHOLD OF A NEW WORLD"

Rev Jonalu Johnstone reflects, "There are a few monumental experiences of our lives where we think, "Nothing will ever be the same again." Some of them are personal--a wedding day, graduation, or the death of a parent. Others are cultural--an assassination, a war, a pandemic. We're living through a time when we think, "Nothing will ever be the same again." What will it be, though? Let's awaken our imaginations to a brand new world." Our convener is Susan Adamchak at 785 477-4407 or sadamchak@kansas.net.

MAY 10 "THE THRESHOLD OF HOME"

Rev Jonalu Johnstone presents this service. We've become quite familiar over recent weeks with the interior of our homes, as we've been restricted to them. As we celebrate this Mothers' Day, we'll consider our attachments to home and family, what it means to be there, and what it means to cross the threshold to leave. Our convener is Les Loschky at 785 317-2226 or loschky@gmail.com.

MAY 17 "THRESHOLDS OF SOCIAL CHANGE"

Rev Jonalu Johnstone offers reflections. What makes change happen socially and culturally? At one time, scientist saw evolution as a slow process with subtle change from generation to generation. Now, there's more attention to how outward events create sudden adaptations and radical shifts. Does culture change more in gradual incremental ways, or do conditions generate radical social changes in a short period of time? And how does that relate to life now? In the shadow of coronavirus, we stand balanced between different visions of what our world, and our nation, might become. What social changes can we expect? What social changes can we encourage? Our convener is Tom Phillips at 405 880-6483 or twp1@ksu.edu.

MAY 24 "SPIRITUAL JOURNEYS"

Spiritual Journeys interviews continue, featuring Fellowship members Gene Sievers and Dixie Moreau. Their individual paths did not begin as Unitarian Universalists. Hear this couple recount their childhood, doubts and joys, and aspirations for the future. Our convener is Jessica Sievers at 785 532-8471 or sieversj@gmail.com.

MAY 31 "ON THE SPIRITUAL THRESHOLD"

Rev Jonalu Johnstone reflects, "As Christians celebrate Pentecost (the receiving of the Holy Spirit) and Jews Shavu'ot (the receiving of the Law at Mount Sinai), we'll look at what it means to approach a spiritual threshold, a time when the wind of the spirit moves through a people. Both groups were wandering in wildernesses, literally or metaphorically. How did Spirit shape them? "The wind blows where it chooses, and you hear the sound of it, but you do not know where it comes from or where it goes. So it is with everyone born of the Spirit." Our convener is Judy Nickelson at 785 304-0086 or judynickelson@gmail.com.

*There will be **NO in-person attendance** at Sunday services, at this time.
Watch for announcements as circumstances develop. Learn how to join us
for lively and well-attended **VIRTUAL SERVICES** at uufm.net/zoom.*



UUFM is a
WELCOMING CONGREGATION
Learn more about the Welcoming Congregation initiative at
www.uua.org/lgbtq/welcoming/program

UU FELLOWSHIP OF MANHATTAN

PO Box 910
Manhattan, KS 66505
(785) 537-2349
office@uufm.net / www.uufm.net

REV JONALU JOHNSTONE, minister
revjonalu@uufm.net

MARK MAYFIELD, Board Chair
ferguson.mayfield@gmail.com

SANDY NELSON, Director of Religious Ed
DRE@uufm.net

RENEA BROWN, Music Director
reneareasoner@gmail.com

SUNDAY SERVICES begin at **10:45 AM** at
<https://uuma.zoom.us/j/9797400824?pwd=WjNlTUldoci9VWjNtMFNsNjBsMlZTZz09>

Watch weekly announcements as
circumstances evolve for information
on the resumption of in-person services.

INSIDE THIS ISSUE	PAGE
Jonalu's Journal	3
Minister's Virtual Hours	3
Religious Ed / Zoom into RE	4
DRE's Virtual Schedule	4
Sandy's Lending Library	4
Activities / UUA General Assembly	5
Social Action / Helping Hands	5
Common Table Grant	5
Fair Trade Coffee	5
Administrator's Virtual Hours	6
Newsletter Deadline	6
Caring Team Ready to Help	6
Sunday Services on Zoom	6
May Calendar	8

COMING UP ...

Join old friends and meet new ones on
THURSDAYS, during **DINNER CONVERSATION HOUR** on Zoom. More on page 5.

Sandy Nelson has posted an extensive list of **BOOKS** she will lend out during the stay-at-home period. Learn more on page 4.

Renea Brown invites Fellowship musicians to **SHARE YOUR MUSIC** during virtual Sunday services. Learn more on page 5.

We know that the world we return to from the domain of coronavirus isolation will not be the same as the world we left. We were already feeling on the cusp of something new--too soon to know whether new would be good or bad. With climate change, political stalemate and dysfunction, increased nationalism around the world, increased racial and cultural diversity here at home, and a growth in activism, change has been inevitable. With COVID-19 added to the



mix, the change is accelerated and thrust upon us. And there's no clear vision of the future, with the uncertainties and ambiguities we face.

Last Saturday, I attended the virtual Regional Assembly of the MidAmerica

Region of the UUA. There Rev Leslie Takahashi (chair) and several other members of the Commission on Institutional Change talked about their process and recommendations. Also, Taquiena Boston, Special Advisor to the [UUA] President for Inclusion, Equity, and Change, drew on Antionette Carroll's work to wonder whether we can design Beloved Community. These two presentations in the context of the pandemic have pushed me to think about how we use this critical juncture in time to move towards envisioning and remaking our communities at all levels more just, equitable, and compassionate.

The Commission on Institutional Change is looking at the UUA and at our congregations to see how we can become a true voice for liberation and against oppression, and how we can live out these commitments within our own institutions. They have gathered stories from more than 1000 UU's and identified key leverage points to create real change in our association. They've identified many areas to address from grounding in a theology of covenant to education for liberation to supporting innovation and risk-taking, acknowledging harm and centering justice. We have the capacity to change Unitarian Universalism into a truly liberating, anti-oppressive movement if we listen to what they have learned. Learn more at www.uua.org/uuagovernance/committees/cic/blog. Watch for their final report at General Assembly this summer, which will be a virtual event.

Taquiena Boston invited us to consider how our broken system must be working for someone. To design Beloved Community, we need to expand "we" until all people of all identities can thrive. We have lived within a system that

supports and produces inequities, in fact, was designed to do so. How do we design to dismantle the inequities?

The pandemic continues to surface inequity within our institutions and systems. Addressing these inequities can happen through a variety of structures--charitable groups like Shepherd's Crossing, support for local businesses from regular people and from governments, mutual aid (check out [facebook.com/MutualAidMHK](https://www.facebook.com/MutualAidMHK)), advocating for government to be more equitable, and helping all to find their voices. It's part of our UU vision to embrace such work and find our place in it. Through it all, we love and support ourselves and all our neighbors.

So may it be,

Jonalu

You can contact Jonalu at 405 627-3859 or revjonalu@uufm.net. Read Jonalu's blog at uufm.net/topic/minister-blog/

REV JONALU JOHNSTONE'S VIRTUAL OFFICE HOURS

Rev Jonalu Johnstone will be available during virtual office hours from 3 to 5 pm, TUESDAYS and THURSDAYS, throughout May. You can log in anytime from 3 to 5, at <https://uuma.zoom.us/j/9797400824?pwd=WjNTUldoci9VWjNtMFNsNjBsMlZTZz09> after down-



loading Zoom at <https://zoom.us>. Or you can phone in by calling 669 900 6833. When you hear the recorded voice say, "Welcome to Zoom. Please enter your meeting ID followed by pound" dial 979 740 0824#. Watch for announcements as circum-

stances evolve. We'll let you know when in-person office hours resume. Contact Jonalu at 405 627-3859 or revjonalu@uufm.net.

RELIGIOUS EDUCATION NEWS

BE CREATIVE

How are you being creative during these stay-at-home weeks? I posed that question to the students recently. Here's a sampling of what I heard:

- Legos
- Drawing
- Painting
- Baking
- Learning embroidery
- Composing music
- Piano playing
- Gaming
- Singing
- Dancing
- Collage
- Cooking
- Chalk pictures
- Coloring

I hope your month of May is filled with creativity.

See you soon,

Sandy Nelson

RE IN YOUR PAJAMAS!

RE Zoom check-in each Sunday from 10:00-12:30. Join the Zoom meeting at <https://us04web.zoom.us/j/4849854310> or call 669 900-6833 and use meeting ID# 484 985 4310. Learn more from Sandy Nelson at 785 341-0135 or DRE@uufm.net

BOOK LENDING

Sandy announces, "I am blessed to live in a house with many books. If you're tired of digital media and wish the library would reopen so you and your kids could get some books, well, I've got some to lend." View the list at <https://bit.ly/2S89QBL>.



DRE's SCHEDULE

Sandy will be available during virtual office hours on **TUESDAYS** and **THURSDAYS**, from 3:30 to 4:30 pm.

Check in at <https://us04web.zoom.us/j/4849854310> and tell her what's on your mind. Need 15 minutes to yourself? Have the kids join her for a little conversation.

SOCIAL ACTION NEWS

ACTIVITIES AND EVENTS -

EVENTS ARE OPEN TO ALL INTERESTED PEOPLE

The **MEN'S LUNCH** group meets virtually EVERY WEDNESDAY, at 12 noon. If you would like an invitation to this Zoom gathering, please contact Kathleen Oldfather at 785 537-3738 or kjoldfather@gmail.com.

Join Elke Lorenz for **DINNER CONVERSATION HOUR** on Zoom, on THURSDAYS, from 5:30 to 6:45 pm. If you'd like to attend, contact Elke at 785 341-8997 or elkelorenz9@gmail.com.

The UUFM **BOOK DISCUSSION GROUP** meets Friday, MAY 29, at 10 am. Currently we are meeting via Zoom. We read widely, including history, fiction, natural sciences and biography. We welcome new members. For information, contact Lorrie Cross at 785 539-7883 or lmcross@kansas.net. To request a Zoom invitation, contact Susan Adamchak at sadamchak@kansas.net.

SHARE YOUR MUSIC!

While we practice physical distancing, our congregation is coming together in exciting new ways. UUFM Music Director Renea Brown invites Fellowship musicians, vocalists, and musical families to share their music during our virtual Sunday morning services. Ask Renea how you can share your music at 785 209-2886 or reneareasoner@gmail.com.

UUA GENERAL ASSEMBLY

The UUA General Assembly gathers JUNE 24 through 28. *Rooted, Inspired, & Ready!* is the theme for the 2020 UUA General Assembly. *"We are in touch with our theological roots, we are engaged in transforming our faith, and we are fired up to take action in the wider world."* This year's assembly will be a 100% VIRTUAL EVENT! There will be inspiring speakers, a variety of workshops, worship services, and opportunities to meet and connect with UUs from around the country. Learn more, and register to attend at uua.org/ga.

HELPING HANDS

In MAY, Helping Hands contributions will be collected for the **BOYS AND GIRLS CLUB OF MANHATTAN**, whose mission is to enable young people to reach their full potential as productive, caring, responsible citizens. Learn more at www.bgclubmanhattan.com/.

In April, Fellowship members and friends contributed Sunday morning collections to the Fairy Godmothers' Fund. THANK YOU all for your generous donations!

While we are meeting virtually, our Helping Hands recipients still need the annual contributions they've come to rely on from our congregation. You can donate on-line to Helping Hands, or give to UUFM's General Operating fund, at uufm.net/donate. Learn more from Helping Hands coordinator Dixie Moreau at 785 477-8188 or dixie.moreau53@att.net.

FAIR TRADE COFFEE, TEA AND CHOCOLATE



Equal Exchange whole bean, ground, and decaf coffees, as well as chocolate and tea are still available for purchase. Learn more from Anne Cowan at 785 537-2025 or anne_cowan@sbcglobal.net.

Equal Exchange works in collaboration with the Unitarian Universalist Service Committee (UUSC). Sourced directly from farmer cooperatives, following the standards and principles of fair trade on 100 percent of its products.

GREAT NEWS FROM COMMON TABLE!

As many of you know, the community meal that our Fellowship sponsors, *HAPPY KITCHEN*, has been cancelled, while other community meals have gone entirely to take-out meals because of the coronavirus pandemic. The pandemic has increased our meal costs because of the need for take-out containers. The Common Table, the coalition of churches that provide community meals, applied to the Greater Manhattan Community Foundation for assistance in purchasing these containers and for funding of the extra food costs that we anticipate. The great news is that the Community Foundation has awarded Common Table more than \$8,000 over the next three months to help with these additional costs. So, if you know someone at the Community Foundation, please thank them.

HELPFUL INFORMATION FOR MEMBERS AND FRIENDS

BUILDING USE AND SCHEDULING

Currently, the Fellowship building is not available for large gatherings. Watch weekly email announcements for updates in our building use policy, as circumstances evolve. Please check with Susan Turner to pre-reserve future dates when the building may be open again. Contact Susan at 785 539-3272 or office@uufm.net.

JUNE NEWSLETTER DEADLINE

The deadline for submissions to the June edition of *The UUFM Voice* will be Friday, **MAY 15**. Submissions received later may not be included in the newsletter. *If your group is meeting in a new way during the pandemic, please let us know* so that we can pass this information on to other members and friends who may want to participate. Send your newsletter contributions to Susan Turner at 785 539-3272 or office@uufm.net.

ADMINISTRATOR'S VIRTUAL HOURS

Office Administrator Susan Turner will be available during virtual office hours from 3 to 5 pm, on SATURDAYS in May. If you haven't already, download Zoom at <https://zoom.us>, then log in at <https://us02web.zoom.us/j/85495266852> any time between 3 and 5 pm. The meeting ID is 854 9526 6825. Contact Susan at any time at 785 539-3272 or office@uufm.net.

Contact Fellowship administrator Susan Turner at 785 539-3272 or office@uufm.net to **UPDATE YOUR MAILING ADDRESS, PHONE, or EMAIL**, or to **CANCEL YOUR SUBSCRIPTION** to this newsletter. You may also contact Susan to learn how to join our private **COFFEE AND CONVERSATIONS FACEBOOK** group.

If you've considered **BECOMING A MEMBER** of UUFM, ask Welcoming chair Shirley Hobrock at 785 776-3175 or shirleyjhobrock@hotmail.com, or Jonalu Johnstone at 785 537-2349 or revjonalu@uufm.net.

Fellowship members may receive **UU WORLD MAGAZINE**, without cost.

An audio version of *UU World* is available for those with vision or reading difficulties. To subscribe, contact Susan Turner at 785 537-2349 or office@uufm.net. Read *UU World* online at www.uuworld.org.

Join in discussions of interest; receive information on community events, and last-minute updates and announcements on our UUFM **EMAIL LIST**. Contact list moderator Ruth Welti at welti@ksu.edu to subscribe.

Consider the convenience of **ELECTRONIC GIVING**. UUFM relies on the financial support of our congregation and automatic monthly contributions offer a simple and easy way to give on a regular basis. Learn more from Fellowship bookkeeper Sandy Nelson at 785 341-0135 or sandralounelson@yahoo.com. You can also make pledge payments, contribute to our General Operating fund, or give to our Helping Hands recipient directly, at uufm.net/donate. *Thank you!*

SUNDAY ANNOUNCEMENTS

Please contact fellowship administrator Susan Turner at 785 537-2349 or office@uufm.net, **NO LATER THAN WEDNESDAY EVENING** with announcements and information for inclusion in slides displayed before virtual Sunday morning services, from 10:30 to 10:45 am.

CARING FOR MEMBERS AND FRIENDS

Providing support to one another is one of the most important things we do as religious community. Our Caring Team is ready to support you, or help you in supporting others. If you're sick and could use someone to do errands, or can use any kind of assistance or support, please let us know at 785 539-3272 or office@uufm.net.

PARTICIPATE IN VIRTUAL MEETINGS AND SERVICES

Join us from home to participate in virtual Sunday services. We begin announcements at 10:30 am. The service follows at 10:45 am. First, download Zoom at <https://zoom.us>, then click into the Sunday service at <https://uuma.zoom.us/j/9797400824?pwd=WjNTUldoci9VWjNtMFNsNjBsMlZTZz09>. Or call 669 900 6833 to listen on your phone. The meeting ID is 979 740 0824. Find helpful hints and links at uufm.net/zoom/.

MAY 2020 at UUFM

Sunday

Monday

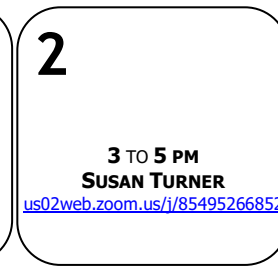
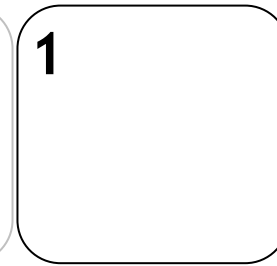
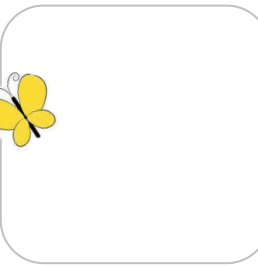
Tuesday

Wednesday

Thursday

Friday

Saturday



3
10 AM AND 12 PM
ZOOM IN TO RE
us04web.zoom.us/j/4849854310
10:45 AM SUNDAY SERVICE
*On the Threshold
of a New World*

4

5 3 TO 5 PM
JONALU JOHNSTONE
uuma.zoom.us/j/9797400824?pwd=WjNTUldoci9VWjNtMFNsNjBsMlZTZz09
3:30 TO 4:30 PM
SANDY NELSON
us04web.zoom.us/j/4849854310

6
12 NOON MEN'S LUNCH
Kathleen Oldfather
kjoldfather@gmail.com

7 3 TO 5 PM
JONALU JOHNSTONE
uuma.zoom.us/j/9797400824?pwd=WjNTUldoci9VWjNtMFNsNjBsMlZTZz09
3:30 TO 4:30 PM
SANDY NELSON
us04web.zoom.us/j/4849854310

8
THURSDAY, MAY 7
5:30 PM DINNER CONVERSATION HOUR
Elke Lorenz
elkelorenz9@gmail.com

9
3 TO 5 PM
SUSAN TURNER
us02web.zoom.us/j/85495266852

10
10 AM AND 12 PM
ZOOM IN TO RE
us04web.zoom.us/j/4849854310
10:45 AM SUNDAY SERVICE
The Threshold of Home

11

12 3 TO 5 PM
JONALU JOHNSTONE
uuma.zoom.us/j/9797400824?pwd=WjNTUldoci9VWjNtMFNsNjBsMlZTZz09
3:30 TO 4:30 PM
SANDY NELSON
us04web.zoom.us/j/4849854310
7 PM BOARD MEETING

13
12 NOON MEN'S LUNCH
Kathleen Oldfather
kjoldfather@gmail.com

14 3 TO 5 PM
JONALU JOHNSTONE
uuma.zoom.us/j/9797400824?pwd=WjNTUldoci9VWjNtMFNsNjBsMlZTZz09
3:30 TO 4:30 PM
SANDY NELSON
us04web.zoom.us/j/4849854310

15 *last minute*
NEWSLETTER DEADLINE
THURSDAY, MAY 14
5:30 PM DINNER CONVERSATION HOUR
Elke Lorenz
elkelorenz9@gmail.com

16
3 TO 5 PM
SUSAN TURNER
us02web.zoom.us/j/85495266852

17
10 AM AND 12 PM
ZOOM IN TO RE
us04web.zoom.us/j/4849854310
10:45 AM SUNDAY SERVICE
Thresholds of Social Change

18

19 3 TO 5 PM
JONALU JOHNSTONE
uuma.zoom.us/j/9797400824?pwd=WjNTUldoci9VWjNtMFNsNjBsMlZTZz09
3:30 TO 4:30 PM
SANDY NELSON
us04web.zoom.us/j/4849854310

20
12 NOON MEN'S LUNCH
Kathleen Oldfather
kjoldfather@gmail.com

21 3 TO 5 PM
JONALU JOHNSTONE
uuma.zoom.us/j/9797400824?pwd=WjNTUldoci9VWjNtMFNsNjBsMlZTZz09
3:30 TO 4:30 PM
SANDY NELSON
us04web.zoom.us/j/4849854310

22
THURSDAY, MAY 21
5:30 PM DINNER CONVERSATION HOUR
Elke Lorenz
elkelorenz9@gmail.com

23
3 TO 5 PM
SUSAN TURNER
us02web.zoom.us/j/85495266852

24
10:45 AM SUNDAY SERVICE
Spiritual Journeys
31 **10:45 AM SERVICE**
On the Spiritual Threshold

25
SUNDAY, MAY 24 AND 31
10 AM AND 12 PM ZOOM INTO RE
us04web.zoom.us/j/4849854310

26 3 TO 5 PM
JONALU JOHNSTONE
uuma.zoom.us/j/9797400824?pwd=WjNTUldoci9VWjNtMFNsNjBsMlZTZz09
3:30 TO 4:30 PM
SANDY NELSON
us04web.zoom.us/j/4849854310

27
12 NOON MEN'S LUNCH
Kathleen Oldfather
kjoldfather@gmail.com

28 3 TO 5 PM
JONALU JOHNSTONE
uuma.zoom.us/j/9797400824?pwd=WjNTUldoci9VWjNtMFNsNjBsMlZTZz09
3:30 TO 4:30 PM
SANDY NELSON
us04web.zoom.us/j/4849854310

29
10 AM BOOK DISCUSSION
Susan Adamchak
sadamchak@kansas.net
THURSDAY, MAY 28
5:30 PM DINNER CONVERSATION HOUR
elkelorenz9@gmail.com

30
3 TO 5 PM
SUSAN TURNER
us02web.zoom.us/j/85495266852