



WHAT DOES IT MEAN TO BE

A PEOPLE OF POSSIBILITY?

Of all our topics this year, possibility is arguably most central to our faith. It has distinguished Unitarian Universalists from the start. Historically, when others saw depravity and sin at the core of human identity, we saw potential--sometimes with hardly any boundaries. When many were preaching that this world was fallen, and we should look instead to the hope of an afterlife, we found ourselves falling in love with the possibility of heaven on earth. Theologically, you might say that we were the people that believed that God hadn't given up on any of us and so we shouldn't give up on each other or this world. Psychologically, it's led to us being a people of "why not?" Why not give people another chance? Why not fight what seems a losing battle? Why not risk a little failure? After all, to us the possible has always seemed more likely than not!

So that's our religion. But what about us personally? How open have you been recently to "Why not?" How's your faith in possibility doing? As we honor our religion's trust in what's possible, we need to allow space for the reality that trusting possibility isn't so easy for many of us. Here's how one Soul Matters member puts the challenge:

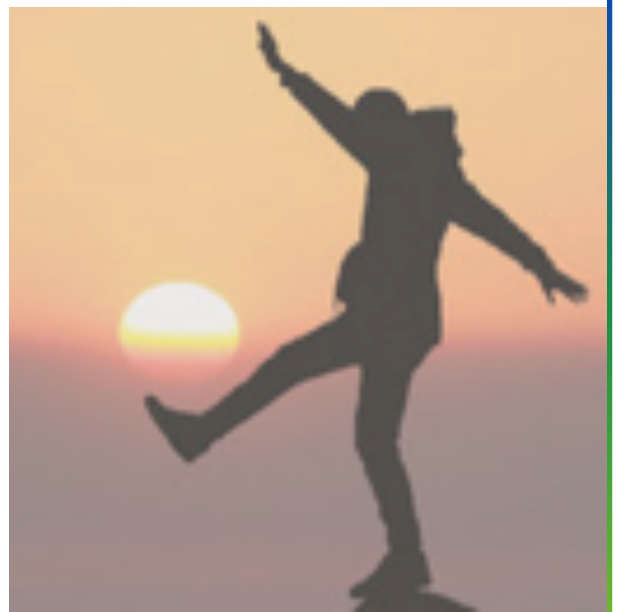
"When I think of possibility, I think of all the people and opportunities we close the door on. Such as: 'I will never see eye to eye with my sister.' 'I couldn't possibly leave this job to start my own business.' 'I will never have close friends like I had where I used to live.' 'I will never really make a difference, so why bother?' 'UU's will always be a small faith.'"

We tell ourselves so many small things about who we and others are. And we know that's not really because we're pessimistic. More often than not, it's about protecting ourselves. There's comfort in convincing yourself that the work is hopeless; that way you don't have to try and risk failure, hurt or disappointment yet again.

All of which is to say that maybe being a people of possibility has more to do with being a people of vulnerability and courage than we've thought. The work isn't just about *believing* in possibility. It's about being willing to endure a few wounds along the way. It can hurt to be hopeful. Especially with all that is going on in our world and society right now, we need to make room for that.

Perhaps the real secret is remembering that "Why not?" is something we all have to say together.

As we hold a congregational meeting on January 20 to consider possibilities, may we strive to grow into the best UU fellowship possible.



JANUARY 2019 SUNDAY SERVICES

OUR THEME IN JANUARY EXPLORES
*"WHAT DOES IT MEAN TO BE A PEOPLE OF **POSSIBILITY**?"*

JANUARY 6 "COULD IT BE? YES, IT COULD!"

Rev Jonalu Johnstone speaks. If so much is mysterious and unknown, as we discovered last month, then possibilities open wide! What happens if we consider all the possibilities--or at least, a bunch of them? Restricting ourselves to one --or even two--limits what might come into being. How can our lives open up if find more possibilities? And how do we do that? Convener is Cathy Hedge at 537-1101 or catherinejeanhedge@gmail.com.

JANUARY 13 "THE POSSIBILITY OF COMMUNITY"

What is possible when a community discovers what it cares about? Members of Manhattan's Safe and Affordable Housing Action share their experiences. Convener is Katie Kingery-Page at 341-5650 or kingerypage@gmail.com.

JANUARY 20 "DREAMS AND DARES"

Rev Jonalu Johnstone speaks. The Rev Martin Luther King's birthday reminds of us dreams. Sometimes, though, we have to take it further, embracing possibilities and daring to make a difference. Instead of letting the holiday weekend turn us towards the past, how might it turn us towards possible futures that we can dare to create? Children and youth join us in this *SERVICE FOR ALL AGES*. Rob Morrison, at 480 861-1732 or william.robert.morrison@gmail.com, convenes.

*Voting members are urged to stay following the service on January 20, for a **CONGREGATIONAL MEETING** to consider space sharing discussions with the Manhattan Mennonite Church, and funding for needed roof repairs at UUFM. Learn more on pages 3 and 7 of this newsletter.*

JANUARY 27 "REFRAMING SIGNS: FINDING MEANING WITHIN MIXED MESSAGES"

We are joined by Lara Pollock from the UU Church of Wichita. Lara is the daughter of retired UU minister Greta Crosby, an intuitive healer, a licensed acupuncturist and adjunct instructor for WSU's class on Complementary and Alternative Medicine. We encounter various signs in our daily lives. Some convey messages which align with our personal philosophy, and some signs send unharmonious messages. We can choose how to respond to unkind signs we see throughout the day. We can blindly accept them, we can reject them entirely and subsequently foster an internal knot of resentment, or we can creatively reframe them into messages that resonate with our personal belief system. Convener is Mark Clarke at 341-7308 or ibyte64@gmail.com.

UU FELLOWSHIP OF MANHATTAN

PO Box 910
 Manhattan, KS 66505
 (785) 537-2349
 office@uufm.net / **uufm.net**

REV JONALU JOHNSTONE, minister
 revjonalu@uufm.net

JESSICA SIEVERS, Board Chair
 (785) 532-8471
 sieversj@gmail.com

SANDY NELSON, Director of Religious Ed
 DRE@uufm.net

SUNDAY SERVICES begin at **10:45 AM**
 at **481 ZEANDALE ROAD**

INSIDE THIS ISSUE	PAGE
Jonalu's Journal	3
Minister's Hours	3
Congregational Mtg	3
Religious Ed / Parents Night Out	4
DRE Schedule / <i>Our Whole Lives</i>	4
Activities and Events	5
<i>Themes in UU History - Adult RE</i>	5
Tai Chi / Meadowlark service	5
<i>Path to Membership</i>	5
<i>Volunteer Opportunities</i>	6
Helping Hands / Fair Trade Coffee	6
<i>KS People's Agenda</i>	6
<i>Happy Kitchen Help</i>	7
Coffee and Greeting Teams	8
Admin Schedule / Subscriptions	8
January Calendar	9

COMING UP ...

Join us for **THEMES IN UU HISTORY AND THEOLOGY** before the service, at 9:30 am, on Sunday, **JANUARY 6**. Learn more on page 5.

Friends are invited to **PATH TO MEMBERSHIP** on Sunday, **JANUARY 13**. Learn more on page 5.

The final gathering of **PARENT NIGHT OUT** meets on Friday, **JANUARY 4**, at 6:30 pm. More on page 4.

Members are encouraged to attend a **CONGREGATIONAL MTG**, on Sunday, **JANUARY 20**. More on pages 3 and 7.



UUFM is a
WELCOMING CONGREGATION
 Learn more about the Welcoming Congregation initiative at
www.uua.org/lgbtq/welcoming/program

Why would we think about doing things differently?

That's the basic question whenever we begin looking at possibilities in our personal or congregational lives. You'll see elsewhere in this newsletter that the Board has set January 20 as a congregational meeting to talk about exploring a possibility, that of whether we could build a new space in cooperation with the Manhattan Mennonite Church. Many of you have been part of conversations about the idea of moving from our beloved home. Some of you probably haven't, so here are the basics:

- One of the three goals the congregation set for Developmental Ministry is growth. We are experiencing slow growth.
- This fall our attendance is up. The sanctuary is getting crowded again, and the parking lot even more crowded, at times even full.
- To expand on our current site would cost more than \$3 million because of the hill, septic field, and other factors, and would still leave us with inadequate parking.
- Land and church buildings are difficult to find in Manhattan.

So, our leadership--lay and professional--has been exploring options, including the possibility of sharing space. A lot



would need to be worked out, of course--service times, governance and rules of the space, design, how two separate organizations would work together.

As minister of a democratically functioning congregation I defer to the decisions

made by the congregation. I also, though, remind you of the theological principles that might underlie decisions. First, our commitment to environmental sustainability encourages us to look at our carbon footprint as a congregation. Currently, only the most intrepid (and our one member who lives on Zeandale Road!) ever bike or walk to our location. Also, sharing a space would reduce both congregations' use of natural (and financial) resources. Second, one aspect of our vision is to be a beacon, which can be hard to do when our location is obscure. It makes sense to consider where we can best serve our community. Finally, as a congregation we have responsibility not only to our current members, but also to those who will come after. We need to consider, at times, not what is best and most convenient

for ourselves, but what is best for the organization in the long-term.

There are, of course, legitimate concerns and questions about the possibility of moving, and of cooperating with another group to do so. Hearing all of those out is mandatory for a covenanted community striving to be its best self.

Possibilities are both exciting and scary, controversial and energizing. May our discussion be respectful and filled with curiosity.

In faith and freedom, *Jonalu*

Talk to Jonalu after most Sunday services, or contact her at revjonalu@uufm.net or 537-2349. Read Jonalu's blog at uufm.net/topic/minister-blog/

CONGREGATIONAL MEETING -- SUNDAY, JANUARY 20

The UUFM Executive Board urges voting members to attend a Congregational Meeting following the service, on Sunday, JANUARY 20. Two issues will be addressed: Consideration of discussions with the Manhattan Mennonite Church, concerning shared space; and funding for much needed roof repairs at the Fellowship building. Please attend if you are able. We cannot conduct business unless a quorum of at least 40% of our membership is present. Learn more from Jessica Sievers at 532-8471 or sieversj@gmail.com. *Let us know if you'll need childcare while we meet.*

REV JONALU JOHNSTONE'S SCHEDULE

Wednesday, Jan	2 - 2 to 4 pm, Radina's Aggieville
Thursday, Jan	3 - 1 to 5 pm
Tuesday, Jan	8 - 1:30 to 5 pm
Thursday, Jan	10 - 1 to 4:30 pm
Friday, Jan	11 - 1 to 3 pm, Radina's Bakehouse
Wednesday, Jan	16 - 1 to 3 pm, Radina's Aggieville
Thursday, Jan	17 - 1 to 5 pm
Tuesday, Jan	22 - 1:30 to 5 pm
Wednesday, Jan	23 - 12:30 to 2:30 pm, Radina's on the Hill
Thursday, Jan	24 - 3 to 5 pm
Tuesday, Jan	29 - 1 to 5 pm
Wednesday, Jan	30 - 9 to 11 am, Radina's Aggieville
Thursday, Jan	31 - 1 to 5 pm

During office hours, contact Jonalu at 537-2349 or revjonalu@uufm.net. During "out-of-office" hours drop into Radina's for a cup of coffee and a chat.

RELIGIOUS EDUCATION NEWS

What a wonderful and wonder-filled 2018 we had. Thanks to everyone who made it a glorious year, especially those who showed up for the Mayor's Holiday Lighted Parade. What a way to end the year! 2019 will surely be just as wonderful. At the end of January and into early March, we offer Our Whole Lives classes to 4th-6th graders. This extra class allows our pre-teens to gain knowledge about their bodies and respect for themselves and others. Regular religious education classes finish up the winter quarter with lessons on our Christian and Jewish heritage. Spring quarter (March-May) will be all about World Religions. And then the summer hits and I'll be looking for "tour guides" so all our students can learn more about the world around them.

See you soon, *Sandy*

Talk with Director of Religious Education Sandy Nelson most Sunday mornings before or after the service, or contact her at 341-0135 or DRE@uufm.net.

Remember: all children must be registered for the 2019-2020 year. Registration forms are available on the RE bulletin board at the end of the hallway as well as online at: <https://form.jotform.com/51486475507160>.

OWL INFORMATIONAL MEETING

Although still in the planning stages, an informational meeting for parents of OWL students, and parents interested in the Our Whole Lives program, will be held following a Sunday service in January. Watch for email announcements, and announcements in Sunday orders of service, for more details as they become available.

OUR WHOLE LIVES

Our Whole Lives (OWL) classes for 4th-6th graders will be held mid-January through mid-March. OWL is a respected UU sexual education program. Children learn in an accurate and age appropriate way about human development, relationships, personal skills, sexual behavior, sexual health, and society and culture. The core values are self worth, sexual health, responsibility, justice, and inclusivity. If you have children in those age ranges and would like to enroll them in OWL, or if you have questions about the OWL program, contact Sandy Nelson at 341-0135 or dre@uufm.net as soon as possible. There's also a lot of great information at <http://www.uua.org/re/owl>.

DRE's SCHEDULE

This month, Sandy will be in the Fellowship office on **TUESDAYS** and **THURSDAYS**, from 3:30 to 4:30 pm, with the exception of New Years Day, Tuesday, January 1.

PARENT NIGHT OUT / KID NIGHT IN

Friday, JANUARY 4, from 6:30 to 9:30 pm, will be the last Parent Night Out/Kid Night In. Effective February 1, UUFM will no longer hold Parent Night Out/Kid Night In. Declining attendance and limited resources have contributed to this decision. However, if there are 4 or 5 adult volunteers who would like to continue the program, please let me know and I'll put you all in touch with each other. Also the idea of morphing the program into a babysitting cooperative has been floated. Let me know if you're interested in that as well.

Remember: this is an RSVP event and space is limited. Please RSVP as soon as possible, but no later than Thursday, January 3. Learn more from Sandy Nelson at 341-0135 or DRE@uufm.net.

ACTIVITIES AND EVENTS – EVENTS ARE OPEN TO ALL INTERESTED PEOPLE

The **MEN'S LUNCH** group meets EVERY WEDNESDAY, at 12 noon, in the Jupiter room (large RE room). Bring a lunch for yourself and come ready for spirited conversation. Michael Oldfather at 537-3738 or mou812@ksu.edu.

Please join us for our next ACTION WEDNESDAY (**AWed**) **POTLUCK DINNER** on Wednesday, JANUARY 2. Following dinner at 6 pm, those attending are invited to join committee meetings of interest. Learn more from Mark Mayfield at 776-6495 or ferguson.mayfield@gmail.com.

The **WOMEN'S COFFEE** group meets EVERY MONDAY and THURSDAY at 9:30 am, at McDonald's in Westloop. Join us for morning coffee and conversation. More from Jane Pelletier at 537-0954 or mjanepelletier@gmail.com.

Don't miss **BEER AND THEOLOGY**, on the first Friday of every month. This month, we meet on JANUARY 4, at 7 pm, at Auntie Mae's in Aggieville. Contact Chris Bailey at 341-8997 or meadbailey@gmail.com.

The UUFM **BOOK DISCUSSION GROUP** meets on Friday, JANUARY 25, at 10 am, at the Cattell residence. We'll be considering *To Kill a Mockingbird*, by Harper Lee. Learn more from Judy Cattell at 320-5470 or catlark1@gmail.com, or Lorrie Cross at 539-7883 or lmcross@kansas.net.

THEMES IN UU HISTORY AND THEOLOGY

Join us for a monthly adult RE series. We'll meet *BEFORE THE SUNDAY SERVICE*, at 9:30 am (dates vary, as outlined below). All are welcome to any session. We combine presentation with participation. Each session stands on its own, and covers a particular concept in our UU tradition, along with consideration of the concept's place in our present movement. *Let us know in advance (by the Wednesday before) if you'll need childcare during class.*

JANUARY 6 – ON-GOING REVELATION

Revelation is not sealed. We have no standard "truth" we look back to. Evolution of thought defines us.

FEBRUARY 3 – THE POWER OF NATURE

Nature stands out as a UU influence. Paganism and environmentalism are strong strains in our tradition.

MARCH 31 – FEMINISM

Find out about interesting women who have shaped who we are, and the men who supported and stood by them.

APRIL 14 – UNITARIANISM

Unitarianism began as a repudiation of the idea of the Trinity and an embrace of the goodness of humanity.

MAY 5 – UNIVERSALISM

Universalism started as the idea of universal salvation, centered on a loving God.

MEADOWLARK HILLS SERVICE

Join us on Wednesday, JANUARY 23, at 3 pm, in Meadowlark's Tranquility room for our monthly service at Meadowlark Hills. Learn more from Jonalu Johnstone at 537-2349 or revjonalu@uufm.net.

UUFM SINGERS

The UUFM Singers rehearse on Sunday, JANUARY 13 and 20, at 9 am. Learn about all musical opportunities at the Fellowship from Music Director Renea Brown at 785 209-2886 or reneareasoner@gmail.com.

TAI CHI

Curious about Tai Chi? Join Mark Moser, Jonalu Johnstone and other interested folks to practice some easy Chi Gung warm-ups, and learn Wu and Yang styles of Tai Chi. We welcome anyone of any skill level, whatever you know or don't know about this kind of spiritual movement. We meet at 9 am, on Saturday mornings. Contact Jonalu, at 537-2349 or revjonalu@uufm.net, or Mark at 537-5028 or mark@grapeviner.com.

BELOVED CONVERSATIONS

Beloved Conversations led six of us on a journey of growth in our understanding about race and racial justice. Join our Racial Justice Team on Sunday, JANUARY 6, at 4 pm. Learn more from Rev Jonalu, at 537-2349 or revjonalu@uufm.net, or Jessica Sievers, at 532-8471 or sieversj@gmail.com.

PATH TO MEMBERSHIP

On Sunday, JANUARY 13, following the service from 12:15 to 1:15 pm, we'll offer a shortened version of our Path to Membership class, focused entirely on membership, its rights and responsibilities, and how to get involved with the fellowship. If you're ready to join, or just curious about membership, please attend. The Membership Committee will provide snacks. Learn more from Jonalu, at 537-2349 or revjonalu@uufm.net.

GUEST AT YOUR TABLE

Guest at Your Table is a fundraising event for the Unitarian Universalist Service Committee (UUSC). This year, the collection supported work with those affected by violence in Central America. Our campaign ran through December 16. Please return your collection cans to the Fellowship. Leave them on the greeter's table, in the narthex. Or, you may turn in your donation at: www.uusc.org/resources/congregations/guest-at-your-table/. Remember to identify your congregation: the UU FELLOWSHIP OF MANHATTAN, KANSAS. Learn more from Betty Banner at 776-1887 or bettybanner@gmail.com, or Deirdre Greeley at 580 919-9834 or saffyr@gmail.com.

UUFM VOLUNTEER OPPORTUNITIES

COFFEE AND GREETING TEAMS offer a great way to get acquainted and get involved, and each team serves only three or four Sundays each year. Learn more from Susan Turner at 539-3272 or office@uufm.net.

Members will have received a pledge packet at our Annual Meeting, or in the mail in early May. In the packet is a "SERVICE SHEET" allowing members to choose small jobs they might be willing to help out with. We encourage everyone to fill out your forms, and return them to any Board member, or mail them to the Fellowship in the self-addressed envelope provided. Friends who did not receive a pledge packet in the mail may request a service sheet from Susan Turner at 537-2349 or office@uufm.net.

This month, Fellowship volunteers prepare and serve **HAPPY KITCHEN COMMUNITY BREAKFAST** on Friday, JANUARY 4 and 18, from 7 to 8:30 am, at St Paul's Episcopal Church. *We're currently making an effort to expand our service to every Friday morning. If you're interested in learning more, or you're ready to join one of our Happy Kitchen teams, contact Tom Phillips at 405 880-6483 or twp1@ksu.edu, or Rob DeLong at 417 761-2488 rkdelong@gmail.com.*

HELPING HANDS SUNDAY

During the service on Sunday, JANUARY 13, Helping Hands contributions will be collected for the **UUFM PROJECT EXCELL**, providing a college-like experience to developmentally delayed adults. Learn more about this program at www.tryuufm.org/excell.html.

On December 9, Fellowship members and friends contributed to go holiday shopping for adopted families living at the Manhattan Emergency Shelter (MESI). THANK YOU all for your generous donations! Learn more from Helping Hands coordinator Dixie Moreau at 477-8188 or dixie.moreau53@att.net.

FAIR TRADE COFFEE, TEA, AND CHOCOLATE

Equal Exchange whole bean, ground, an decaf coffees, as well as chocolate and tea are available for purchase. To learn more, or to purchase fair trade products, see Anne Cowan following Sunday morning services at the Equal Exchange kiosk in the Fellowship's narthex, or contact her at 340-5001 or anne_cowan@sbcglobal.net.

Equal Exchange works in collaboration with the Unitarian Universalist Service Committee (UUSC). Sourced directly from farmer cooperatives, following the standards and principles of fair trade on 100 percent of its products.



KANSAS PEOPLE'S AGENDA -- 2019 STATE OF THE STATE RALLY

The Kansas People's Agenda calls the 2019 People's State of the State Rally on Tuesday, January 15, at the Kansas Capitol Building, in Topeka. The event begins with Citizen Advocacy Training at 9:30 am, followed by the program and rally from 11:30 am to 1 pm, on the second floor of the Kansas Capitol Rotunda, and then an opportunity to meet with your legislators. Pre-register at kansaspeoplesagenda.org.

RACIAL JUSTICE TEAM MEETING

Rev Jonalu Johnstone and the UUFM Racial Justice team meet on Sunday, JANUARY 6, at 4 pm, at the Fellowship. They invite anyone interested in pursuing this vital work to grow our own understanding and plan effective action to join them. Learn more from Jonalu at 537-2349 or revjonalu@uufm.net.

Happy Kitchen Needs Your Help!!!

Happy Kitchen is a free breakfast served Tuesdays and some Fridays, at St Paul's Episcopal Church.

UUFM currently has three Happy Kitchen teams, providing volunteers that serve breakfast on the first and third Friday.

Happy Kitchen used to have breakfast every Friday of the month.

Other churches are no longer providing Friday teams.

We want to form more teams to give hungry people a warm meal to start EVERY FRIDAY.

Contact Tom Phillips at 405 880-6483 or twp1@ksu.edu, or Rob DeLong at 417 761-2488 or rkdelong@gmail.com,

to learn more, and to find out how you can contribute to this vital community service!



~~~~~

The UUFM Executive Board urges voting members to attend a

## Congregational Meeting

following the service, on Sunday, **January 20.**

Two issues will be addressed:

Consideration of ongoing discussions with the Manhattan Mennonite Church, concerning shared space; and funding for much needed roof repairs at the Fellowship building. Learn more from Jessica Sievers at 532-8471 or [sieversj@gmail.com](mailto:sieversj@gmail.com). *Please let us know if you'll need childcare while we meet.*

### A NOTE FROM OUR CHAIR

Dear Family and Friends,

I hope the holiday season provided you and yours some quality time with your loved ones. For me, spending holidays with family can be a challenge, especially with an increase in the number of individuals I consider to be family. My desire for everyone to be together became limited by the size of my dining room table. Even when some individuals were unable to attend, seating and place settings are limited.

Like my family, and hermit crabs, our UUFM congregation faces similar dilemmas. Growth is necessary for survival. What once was a spacious environment is becoming too confined for our needs. We need to think outside the box--or shell--to find solutions.

How apropos that the theme for the first month of the new year is "Possibility." One of my favorite methods of guided brainstorming asks questions such as, "If resources were unlimited ..." and, "Imagine the future in five years ... ten years ... 50 years ..." The framing of these questions intend to set the mind free from conventions. Possibilities become the blueprint of the dream. During one of these kinds of exercises, I was asked to imagine what the future of my UUFM would look like. My mind was set free from the bounds of our current location and physical structure. What I envisioned was a vibrant, socially active, multigenerational congregation feeding the needs of our community.

Full-time ministry is integral to the vibrancy and growth of our congregation. Over the past few years, members and leaders have brainstormed, researched, and made recommendations for ways to sustain full-time ministry. An opportunity arose to explore the possibility of building shared space with the Manhattan Mennonite Church. Brice Hobrock, Kathleen Tanona and I had a conversation with three Mennonite representatives. Both congregations share an interest in social justice work in the community. Imagine what we could do if we put our volunteer forces together.

Be sure to read January's *Jonah's Journal* [on page 3] for more information. I look forward to hearing from you at our congregational meeting, January 20.

With Hope and Love,

*Jessica Sievers*, Board Chair  
[sieversj@gmail.com](mailto:sieversj@gmail.com)

## COFFEE AND GREETING TEAMS



Jan 6: Shirley Hobrock, Livia Olsen,  
Larry Weaver, and Taryn Cipra  
Jan 13: Elke Lorenz, Fred Reynolds,  
and Lily Colburn  
Jan 20: Austin Roberts, Jeff Brown, Matt  
Brown, and Madilena Mendiola  
Jan 27: Anne Cowan, Christopher Renner,  
Marisa Larson, and Susan Gormely  
Learn more about coffee and greeting  
teams from Shirley Hobrock at 776-3175  
or shirleyjhobrock@hotmail.com.

### NEED A NEW NAME TAG?

If any member would like a new magnetic name tag, please contact Shirley Hobrock at 776-3175 or shirleyjhobrock@hotmail.com, or add your name to the list in the narthex. The cost is \$6 (new members receive name tags at no cost).

### Administrator's Schedule

|                   |                |
|-------------------|----------------|
| Thursday, January | 3 - 1 to 6 pm  |
| Saturday, January | 5 - 2 to 5 pm  |
| Monday, January   | 7 - 1 to 6 pm  |
| Tuesday, January  | 8 - 1 to 6 pm  |
| Thursday, January | 10 - 1 to 6 pm |
| Saturday, January | 12 - 2 to 5 pm |
| Monday, January   | 14 - 1 to 6 pm |
| Tuesday, January  | 15 - 1 to 6 pm |
| Thursday, January | 17 - 1 to 6 pm |
| Saturday, January | 19 - 2 to 5 pm |
| Monday, January   | 21 - 1 to 6 pm |
| Tuesday, January  | 22 - 1 to 6 pm |
| Thursday, January | 24 - 1 to 6 pm |
| Saturday, January | 26 - 2 to 5 pm |
| Monday, January   | 28 - 1 to 6 pm |
| Tuesday, January  | 29 - 1 to 6 pm |
| Thursday, January | 31 - 1 to 6 pm |

Drop in at the Fellowship during Susan Turner's office hours, or call 537-2349. She may be reached at any time at office@uufm.net.

## HELPFUL INFORMATION FOR MEMBERS AND FRIENDS

Contact Fellowship administrator Susan Turner at 539-3272 or office@uufm.net to **UPDATE YOUR MAILING ADDRESS, PHONE, or EMAIL**, or to **CANCEL YOUR SUBSCRIPTION** to this newsletter. You may also contact Susan to learn how to join our private **COFFEE AND CONVERSATIONS FACEBOOK** group.

If you've been considering **BECOMING A MEMBER** of UUFM, ask Welcoming chair Shirley Hobrock at 776-3175 or shirleyjhobrock@hotmail.com, or Jonalu Johnstone at 537-2349 or revjonalu@uufm.net, to learn more.

Fellowship members may receive **UU WORLD MAGAZINE**, without cost. An audio version of *UU World* is available for those with vision or reading difficulties. To subscribe, contact Susan Turner at 537-2349 or office@uufm.net. Read *UU World* online at [www.uuworld.org](http://www.uuworld.org).

Join in discussions of interest; receive information on community events, and last-minute updates and announcements on our UUFM **EMAIL LIST**. Contact list moderator Ruth Welti at welti@ksu.edu to subscribe.

Consider the convenience of **ELECTRONIC GIVING**. UUFM relies on the financial support of our congregation and electronic contributions offer a simple and easy way to give on a regular basis. For details, contact Fellowship bookkeeper Sandy Nelson at sandralounelson@yahoo.com or 341-0135, or pick up literature and a form from the information carousel in the Alsop room at the Fellowship. *Thank you!*

### SUNDAY ANNOUNCEMENTS

Please contact fellowship administrator Susan Turner at 537-2349 or office@uufm.net, **NO LATER THAN WEDNESDAY EVENING** with announcements and information for inclusion in the Sunday morning order of service bulletin.

### CARING FOR MEMBERS AND FRIENDS

If you need a ride or could use a hand, or if you know members or friends who are experiencing life challenges and would appreciate assistance or support, please let our Caring Committee know. Contact us at 537-2349 or office@uufm.net.

### BUILDING USE AND SCHEDULING

Please check with Susan Turner to be sure your desired date is available before finalizing plans for any use of the Fellowship building, including **COMMITTEE MEETINGS**, Fellowship activities, or private events that will be held in the Fellowship building. To confirm building availability and schedule your activity, or for more information, contact Sue at 537-2349 or office@uufm.net.

### FEBRUARY NEWSLETTER DEADLINE

The deadline for submissions to the February edition of *The UUFM Voice* will be Tuesday, **JANUARY 15**. Submissions received later may not be included in the newsletter. Please send your newsletter contributions to Susan Turner at 539-3272 or office@uufm.net.



# JANUARY 2019 at UUFM

Sunday



Monday



Tuesday

Wednesday

Thursday

Friday

Saturday

1

2

2 TO 4 PM **J JOHNSTONE** at  
Radina's Aggieville  
**12 NOON**  
**MEN'S LUNCH**  
**6 PM AWED POTLUCK**  
Courtney Albin, 317-8157

3

1 TO 5 PM  
**JONALU JOHNSTONE**  
1 TO 6 PM  
**SUSAN TURNER**  
3:30 TO 4:30 PM  
**SANDY NELSON** at  
Fellowship, 537-2349

4

**7:30 AM HAPPY KITCHEN** breakfast  
St Paul's Episcopal Church  
**6:30 TO 9:30 PM**  
**PARENT NIGHT OUT**  
**7 PM BEER AND THEOLOGY**  
Auntie Mae's Parlor

5

**9 AM TAI CHI**  
at the Fellowship  
Mark Moser, 537-5028  
**2 TO 5 PM**  
**SUSAN TURNER** at  
Fellowship, 537-2349

6

**9:30 AM**  
**UU HISTORY AND THEOLOGY**  
*On-Going Revelation*  
**10:45 AM SUNDAY SERVICE**  
*Could It Be? Yes, It Could!*  
**4 PM RACIAL JUSTICE** mtg

7

**1 TO 6 PM**  
**SUSAN TURNER** at  
Fellowship, 537-2349

8

**1 TO 6 PM S TURNER**  
**1:30 TO 5 PM J JOHNSTONE**  
**3:30 TO 4:30 PM**  
**SANDY NELSON** at  
Fellowship, 537-2349  
**7 PM BOARD MEETING**  
Jessica Sievers, 532-8471

9

**12 NOON**  
**MEN'S LUNCH**  
Jupiter room

10

**1 TO 4:30 PM**  
**JONALU JOHNSTONE**  
**1 TO 6 PM**  
**SUSAN TURNER**  
**3:30 TO 4:30 PM**  
**SANDY NELSON**  
at Fellowship, 537-2349

11

**1 TO 3 PM**  
**JONALU JOHNSTONE** at  
Radina's Bakehouse  
(405) 627-3859

12

**9 AM TAI CHI**  
at the Fellowship  
Mark Moser, 537-5028  
**2 TO 5 PM**  
**SUSAN TURNER** at  
Fellowship, 537-2349

13

**9 AM SINGERS**  
rehearse  
**10:45 AM SUNDAY SERVICE**  
*Possibility of Community*  
**HELPING HANDS SUNDAY**  
UFM - Project EXCELL  
**12:15 PM**  
**PATH TO MEMBERSHIP**

14

**1 TO 6 PM**  
**SUSAN TURNER** at  
Fellowship, 537-2349

15

**1 TO 6 PM**  
**SUSAN TURNER**  
**3:30 TO 4:30 PM**  
**SANDY NELSON** at  
Fellowship, 537-2349

16

**12 NOON**  
**MEN'S LUNCH**  
Jupiter room  
**1 TO 3 PM**  
**JONALU JOHNSTONE** at  
Radina's Aggieville  
(405) 627-3859

17

**1 TO 5 PM**  
**JONALU JOHNSTONE**  
**1 TO 6 PM**  
**SUSAN TURNER**  
**3:30 TO 4:30 PM**  
**SANDY NELSON** at  
Fellowship, 537-2349

18

**7:30 AM HAPPY KITCHEN** breakfast  
St Paul's Episcopal Church

19

**9 AM TAI CHI**  
at the Fellowship  
Mark Moser, 537-5028  
**2 TO 5 PM**  
**SUSAN TURNER** at  
Fellowship, 537-2349

20

**9 AM SINGERS**  
rehearse  
**10:45 AM SUNDAY SERVICE**  
*Dreams and Dares*  
**12:15 PM**  
**CONGREGATIONAL MTG**  
see page 3

21

**1 TO 6 PM**  
**SUSAN TURNER** at  
Fellowship, 537-2349

22

**1:30 TO 5 PM**  
**JONALU JOHNSTONE**  
**1 TO 6 PM**  
**SUSAN TURNER**  
**3:30 TO 4:30 PM**  
**SANDY NELSON** at  
Fellowship, 537-2349

23

**12:30 TO 2:30 PM**  
**JONALU JOHNSTONE** at  
Radina's on the Hill  
(405) 627-3859  
**12 NOON**  
**MEN'S LUNCH**  
**3 PM**  
**MEADOWLARK SERVICE**

24

**1 TO 6 PM**  
**SUSAN TURNER**  
**3 TO 5 PM**  
**JONALU JOHNSTONE**  
**3:30 TO 4:30 PM**  
**SANDY NELSON** at  
Fellowship, 537-2349

25

**10 AM BOOK DISCUSSION**  
Judy Cattell, 320-5470

26

**9 AM TAI CHI**  
at the Fellowship  
Mark Moser, 537-5028  
**2 TO 5 PM**  
**SUSAN TURNER** at  
Fellowship, 537-2349

27

**10:45 AM SUNDAY SERVICE**  
*Finding Meaning  
within Mixed Messages*

28

**1 TO 6 PM**  
**SUSAN TURNER** at  
Fellowship, 537-2349

29

**1 TO 5 PM**  
**JONALU JOHNSTONE**  
**1 TO 6 PM**  
**SUSAN TURNER**  
**3:30 TO 4:30 PM**  
**SANDY NELSON** at  
Fellowship, 537-2349

30

**9 TO 11 AM**  
**JONALU JOHNSTONE** at  
Radina's Aggieville  
(405) 627-3859  
**12 NOON**  
**MEN'S LUNCH**

31

**1 TO 5 PM**  
**JONALU JOHNSTONE**  
**1 TO 6 PM**  
**SUSAN TURNER**  
**3:30 TO 4:30 PM**  
**SANDY NELSON** at  
Fellowship, 537-2349

