



*WHAT DOES IT MEAN TO BE A PEOPLE OF **BELOVED COMMUNITY**? (from Soul Matters, adapted for UUUFM)*

Henri Nouwen, the treasured Catholic teacher, activist and pastor, once described beloved community as “the place where the person you least want to live with always lives.”

On its surface it seems to be a straightforward reminder not to expect perfection from the communities we join. And not to expect perfection from others. Indeed, it’s a plea to stick with those troublesome others. Forgive them. Accept them. Stay open to the whole of who they are, not just the caricatured sliver of them that makes it easy to write them off.

Besides the obvious calls to commitment, conflict resolution and hard work, there’s also a hidden call to hope woven into Nouwen’s words. To stay in community with difficult or offensive people, we have to hold on to the hope that they can change and grow. We have to believe that their better selves exist and will eventually show up. We have to have faith that giving them the benefit of the doubt is worth it. That assuming their good intentions isn’t foolish.

It’s a tall order. This kind of hopefulness and generosity toward others is not easy.

But here’s the catch, Nouwen doesn’t stop there. Right after that first sentence he adds another. Here’s the whole quote:

"Community is the place where the person you least want to live with always lives ... That person is always in your community somewhere; in the eyes of others, you might be that person."

Ouch! Nouwen doesn’t pull his punches. Just when we were starting to feel good about being the ones who are magnanimous with these annoying and offensive folks, Nouwen reminds us that we are actually among them! But don’t get so caught up in this message of humility that you miss how Nouwen is also using this to call us to an even greater hopefulness.

By adding us to the mix of the unwanted, he’s pointing out that beloved community requires us to believe not only that others are worth our effort but also that we will be worth the effort in the eyes of others!

It’s an insight that we must not miss this month. We human beings run away from community not just because others let us down, but also because we doubt that others won’t step up when we let them down. Beloved community stays at arm’s length not just because it is hard to build, but also because we don’t trust that it will be there for us.

It’s all one big reminder that the work of beloved community is bigger than we usually imagine. It’s not just about building a better world; it’s also about building up each other’s faith. We are in a battle not just against the division between us, but also the doubt within us.

What we really need to hear about beloved community is not just that we can create it, but that we can count on it.

This month, may we make sure we all bless each other with both of those messages.



FEBRUARY 2021 SUNDAY SERVICES

OUR THEME IN FEBRUARY EXPLORES
 "WHAT DOES IT MEAN TO BE A PEOPLE OF **BELOVED COMMUNITY**?"

FEBRUARY 7 "UNFORGETTING OUR HISTORY TO MAKE BELOVED COMMUNITY"

Rev Jonalu Johnstone speaks. The last year has seen a number of pivotal books released that shed light on our racial past in this nation. In this Black History Month, let's consider what we need to learn from the past--from our nation's past and from our religious tradition's past--to move forward towards Beloved Community. Our convener is Judy Nickelson at 785 304-0086 or judy Nickelson@gmail.com.

FEBRUARY 14 "SIDE WITH LOVE SUNDAY"

This worship service is provided by the Unitarian Universalist Association. What if to "side with love" meant making bold, faith-full choices? What if it were even a little bit scary? This worship service brings together worship leaders and musicians from across the country to offer hopeful, moving, challenging reminders about what we, as Unitarian Universalists, are called to do, and BE, in the world. Join our UU siblings across the country in worship! Our convener is Katie Kingery-Page at 785 341-5650 or kingerypage@gmail.com.

FEBRUARY 21 "BELOVED COMMUNITY: NOT A DESTINATION--A WAY OF BEING"

Rev Jonalu Johnstone speaks. We often think of Beloved Community as a goal which we work towards, bending that arc of the universe towards justice, using the image from 19th century Universalist Theodore Parker. What if, instead, we thought of Beloved Community as a place to dwell? A concept to dance with? What if we saw Beloved Community as a way of being, instead of a destination? Our convener is Chris Bailey at 785 341-8997 or meadbailey@gmail.com.

FEBRUARY 28 "BEING A BEACON"

Several members of our congregation will reflect on what it means to be a beacon in the work they do in the community: Betty Banner (Shepherd's Crossing), Tom Phillips (Happy Kitchen), Rob DeLong (COVID testing), Doug Walter (Blessing Box), and Judy Nickelson (Coalition for Equal Justice). Rob DeLong, at 417 761-2488 or rkdelong@gmail.com, convenes.

*There will be **NO in-person attendance** at Sunday services at this time.
 Find a link and instructions to join us for lively and
 well-attended **VIRTUAL SERVICES** on Zoom at uufm.net/zoom.*

FEBRUARY ZOOM MEETINGS

The UUFM **RACIAL JUSTICE** team gathers Sunday, FEBRUARY 7 and 21, at 4 pm. Details on page 6 of this newsletter.

The UUFM **SOCIAL ACTION** team meets Saturday, FEBRUARY 6, at 2 pm. More on page 5.



**UUFM is a
 WELCOMING CONGREGATION**
 Learn more about the Welcoming Congregation initiative at
www.uua.org/lgbtq/welcoming/program

UU FELLOWSHIP OF MANHATTAN

PO Box 910
 Manhattan, KS 66505
 (785) 537-2349

office@uufm.net / www.uufm.net

REV JONALU JOHNSTONE, minister
revjonalu@uufm.net

ROB MORRISON, Board Chair
william.robert.morrison@gmail.com

SANDY NELSON, Director of Religious Ed
DRE@uufm.net

RENEA BROWN, Music Director
reneareasoner@gmail.com

SUNDAY SERVICES begin at **10:45 AM** at
<https://zoom.us/j/92604313401?pwd=OXIyZW1RQ0I4U1cxQ1FpU0x2TlZqdz09>

*Watch weekly announcements
 as our COVID-19 response evolves.*

INSIDE THIS ISSUE	PAGE
Jonalu's Journal	3
Racial Justice Team mtgs	3
Minister's Virtual Hours	3
Religious Ed / Zoom into RE	4
DRE's Virtual Hours	4
UUFM BELOVED COMMUNITY PAGE	4
Activities, Events / Chalice Circles	5
PATH TO MEMBERSHIP CLASS	5
Social Action / Helping Hands	5
UUFM Blessing Box / Fair Trade	5
CRAFT AND BAKE SALE REPORT	6
Racial Justice team schedule	6
Path to Membership class	6
Administrator's Virtual Hours	7
Sunday Services on Zoom	7
February Calendar	9

COMING UP ...

Post your photos on our **BELOVED COMMUNITY PAGE**. Learn more on page 4 of this newsletter.

Interested friends are invited to **PATH TO MEMBERSHIP** on Tuesday, **FEBRUARY 16**. More on page 5.

The **RACIAL JUSTICE** team gathers Sunday, **FEBRUARY 7** and **21**. Learn more on page 6.

Of all the places that we exist--in our neighborhoods, our city, our nation, even our families--the groups we may have highest expectations of may be our religious communities. This is only natural because it is in religious community that we proclaim our highest values, that we describe how we think the world really ought to be and how humans ought to operate. That's why religious communities are more likely than other gatherings to talk about Beloved Community.

At the same time, all members of any religious community are human beings who will never fully incarnate their values--



try as we might. Religious communities often get labeled as "hypocritical," that is, not living up to their values. Hypocrisy is one of the most common reasons for people to leave their religious community. And it is unavoidable.

No community ever fully lives up to its values, just as no human being ever does. We describe our values in our mission and vision and extoll it in our Sunday services. And, we try to live up to it. Still. I often tell new members that someday, the congregation will disappoint you, maybe even break your heart, just as you may fail the congregation somehow. Every community is made up of imperfect human beings. We will fail. We will err. We will disappoint. We will break hearts.

We can't simply shrug it off when errors, disappointments, and heartbreaks occur. So if we imagine that we are in a truly Beloved Community--where our values are centered in love for one another and nurturing the bonds among us--how do we handle being imperfect? How do we navigate a world with such high ideals and such barriers to accomplishing them?

Unitarian Universalism, with its emphasis on the inherent worth and dignity of every person, and its denial of original sin, can be challenged when it comes to accounting for the ruptures and breaks that cause so much pain and trouble in the world. Still, we believe that focusing on goodness is more likely to lead to goodness than focusing on evil or failings.

So Beloved Community becomes a model for us. However, we must never confuse the model with the reality. We must not think that because we proclaim Beloved Community, we live in it. Our community is not a perfect place to gather and grow.

Rather, our community is an imperfect place. Which, ironically, may best equip it to be a place to gather and grow. Here, we can bring our fully human, vulnerable, imperfect selves. And here we will do our best to accept all the fully human, vulnerable, imperfect selves that are brought.

It may not be Beloved Community. It may be the best we can do with what we've got.

I am glad you are here, Beloveds.

May we gather and grow together, *Jonalu*

Contact Jonalu at 405 627-3859 or revjonalu@uufm.net. Read Jonalu's blog at uufm.net/topic/minister-blog/

RACIAL JUSTICE TEAM MTGS

The UUFM Racial Justice team gathers on Sunday, FEBRUARY 7 and 21, at 4 pm, to continue our exploration of the UUA Commission on Institutional Change's final report, [*Widening the Circle of Concern*](#). Find details and future meeting dates on page 6 of this newsletter.

REV JONALU JOHNSTONE'S VIRTUAL OFFICE HOURS

Rev Jonalu Johnstone will be available during virtual office hours from 3 to 4 pm, on Tuesday, FEBRUARY 16, and from 3 to 5 pm, on Tuesday, FEBRUARY 2 and 9, and Thursday, FEBRUARY 4, 11, and 18. Log in at

<https://uuma.zoom.us/j/9797400824?pwd=WjNTUldoci9VWjNtMFNsNjBsMlZTZz09>. Find a link at uufm.net/contact-us. Or you can phone in by calling 669 900 6833. When you hear the recorded voice say, "Welcome to Zoom. Please enter your meeting ID followed by pound" dial 979 740 0824#. Contact Jonalu at 405 627-3859 or revjonalu@uufm.net (emergencies only February 22 through 28).



RELIGIOUS EDUCATION NEWS

FROM OUR DIRECTOR OF RELIGIOUS EDUCATION

Despite the light at the end of the tunnel, I'm still feeling a little overwhelmed. How about you? February's theme is Beloved Community and thinking about our beloved UUFM community helps me feel a little less overwhelmed.

POST ON UUFM'S BELOVED COMMUNITY PAGE

Here's a project that I hope you'll enjoy ... making connection with our beloved community. It's as simple as sharing a comment or a picture. We'd love to hear from you about 1) your favorite local spot, 2) your favorite COVID activity, 3) your favorite UU principle. Here's a link where it's all happening: <http://bit.ly/3sMq5oR>. If you have difficulty posting, feel free to [send it to](mailto:dre@uufm.net) me and I'll post for you.

Sandy Nelson

Contact Sandy at 785 341-0135 or dre@uufm.net.

Zoom INTO RE!

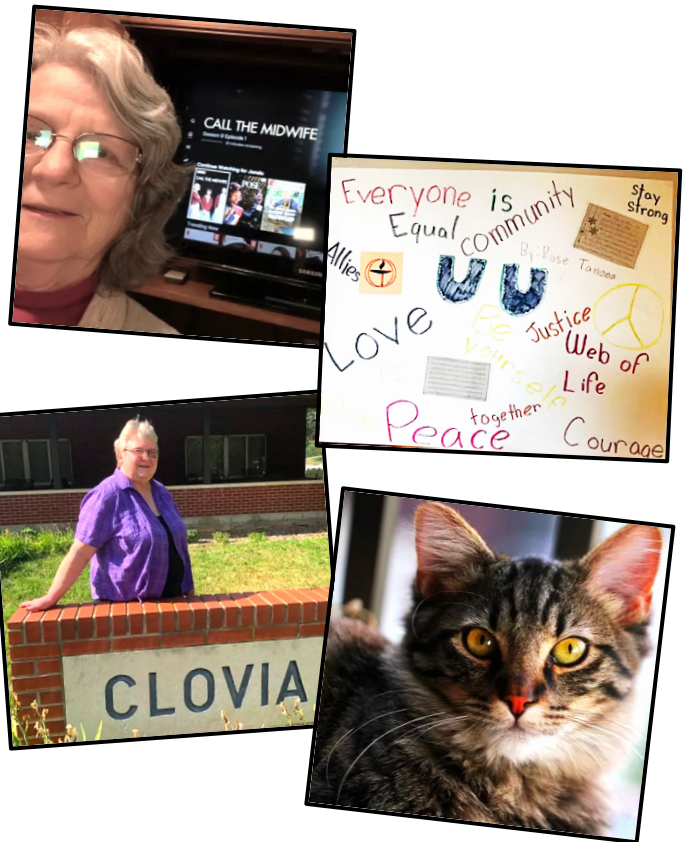
Kids and parents are invited to check in with Sandy Nelson, from 10 and 10:30 am, before Sunday services. Log in at <https://us04web.zoom.us/j/4849854310?pwd=TDhOZ1RRbGpOU1psZG9PSVEzcnNadz09>. Meeting ID is 484 985 4310. If you're asked for a password, use 024920. Learn more from Sandy at 785 341-0135 or DRE@uufm.net.

BOOKS TO LEND

Sandy reminds us, "I am blessed to live in a house with many books. If you're tired of digital media and the library is still not easily accessible, I've got some to lend." View the list at <https://bit.ly/2S89QBL>.

REGISTER YOUR CHILD(REN)

Remember, all children must be registered for the 2020/2021 school year. Registration forms are available at <http://form.jotform.us/form/51486475507160>.



BELOVED COMMUNITY PICS

MEMBERS, FRIENDS, AND STAFF SHARE PHOTOS AND COMMENTS ON OUR BELOVED COMMUNITY PAGE. SEE MORE, AND ADD YOUR OWN ARTFUL COMMENTARY AT <http://bit.ly/3sMq5oR>.

DRE's SCHEDULE

Sandy will be available on Zoom during virtual office hours **TUESDAYS** and **THURSDAYS**, from 3:30 to 4:30 pm.

Call Sandy at 785 341-0135 to arrange a video chat.

ACTIVITIES AND EVENTS - EVENTS ARE OPEN TO ALL

The **WOMEN'S COFFEE** group meets on Zoom MONDAYS and THURSDAYS at 9:30 am. Join us for morning coffee and conversation. Contact Jane Pelletier at 785 537-0954 or mjanepelletier@gmail.com, for an invitation.

The **MEN'S LUNCH** group meets virtually EVERY WEDNESDAY, at 12 noon. If you would like an invitation to this Zoom gathering, please contact Kathleen Oldfather at 785 537-3738 or kjoldfather@gmail.com.

Join Harriette Janke for **DINNER HOUR CONVERSATION** on Zoom, THURSDAYS, from 5:30 to 6:30 pm. If you'd like to attend, contact Harriette at 785 539-0865 or harriettejanke@gmail.com.

The UUFM **BOOK DISCUSSION GROUP** meets Friday, FEBRUARY 26, at 10 am. Currently we are meeting on Zoom. We welcome new members. Learn more from Lorrie Cross at 785 539-7883 or lmcross@kansas.net. To request a Zoom invitation, contact Susan Adamchak at sadamchak@kansas.net.

JOIN A CHALICE CIRCLE!

Chalice Circles give an opportunity to grow in both intimacy and ultimacy, connecting with individual people so you know them and are known by them, and connecting with what is most ultimate, most holy in your own life. Chalice Circles are small groups (8 or 9 people) who meet, at this point via Zoom, once a month, exploring the same themes that we highlight during worship. There's a packet that everyone is given that they engage with on their own prior to the meeting (we understand that everyone has lives and limited time to devote!). Included are spiritual exercises and questions that we talk about, listening deeply to one another's experience. Groups meet at different times the 3rd or 4th week of the month.

If you'd like to know more or want to sign up, contact Rev Jonalu Johnstone at revjonalu@uufm.net.

PATH TO MEMBERSHIP

Rev Jonalu and Membership chair Shirley Hobrock will host a modified Path to Membership class on Zoom, Tuesday, FEBRUARY 16, at 4 pm. This is an opportunity to learn about the our community and share your spiritual journeys. If you are interested in becoming a member, please contact Jonalu, at 405 627-3859 or revjonalu@uufm.net, or Shirley at 785 776-3175 or shirleyhobrock2@gmail.com, for a link and sign-in information.

SOCIAL ACTION NEWS

HELPING HANDS

In FEBRUARY, Helping Hands contributions will be collected for the **KANSAS ABORTION FUND** (formerly, the Peggy Bowman Second Chance Fund), raising funds to ensure that all women and girls can get the abortions they seek. Learn more at kansasabortionfund.org/.

In January, Fellowship members and friends gave Sunday morning collections to UFM's Project EXCELL THANK You for your generous donations!

While we meet virtually, our Helping Hands recipients count on the annual contributions our congregation provides more than ever. Donate on-line to Helping Hands, or give to UUFM's General Operating fund, at uufm.net/donate/.

FAIR TRADE COFFEE



Equal Exchange whole bean, ground, and decaf coffees, and chocolate and tea are still available for purchase from Anne Cowan, who has stock available at home. Contact Anne at 785 537-2025 or anne_cowan@sbcglobal.net.

Equal Exchange works in collaboration with the Unitarian Universalist Service Committee (UUSC), following the standards and principles of fair trade on 100 percent of its products.



UUFM BLESSING BOX

UUFM is sponsoring a **BLESSING BOX** and **LITTLE FREE LIBRARY** at Wonder Workshop. Doug Walter reports our box has received notably increasing demand, especially in the past few weeks. To contribute shelf-stable food, cleaning and hygiene products, or childrens' and youth books, contact Doug at kbsi@cox.net. Or, drop by Wonder Workshop, at 506 S 4th Street, and stock the boxes with your items. The boxes are for people to take what they need and leave what they can. You can donate funds to help support the boxes at uufm.net/donate/.

SOCIAL ACTION TEAM MTG

The UUFM Social Action Team meets on Saturday, FEBRUARY 6, at 2 pm, on Zoom. Everyone is welcome. Contact Judy Nickelson at judy Nickelson@gmail.com or 785 304-0086 for the Zoom link and log-in information.

2020 UUFM CRAFT AND BAKE SALE

Thank You to all who participated in the Christmas sale. We made \$1,375 which is a great boost to our bottom line. An extra thanks to Mark Clarke who was the magician behind the technology and made the sale possible. Also, our heartfelt thanks to Betty Banner for her dedicated organization of this event.

UUFM RACIAL JUSTICE TEAM

The UUFM Racial Justice Team has committed itself to studying the UUA Commission on Institutional Change's final report, [*Widening the Circle of Concern*](#). This means meeting more often than we usually do. Since we have endorsed Black Lives Matter, this seems a good next step to understanding the changes we may have to make in order to become more antiracist and multicultural. We welcome anyone in the congregation to join us.

We meet at 4 pm on Sundays, on scheduled dates seen below.

- FEBRUARY 7 – Session 5, *Living Our Values in the World*
- FEBRUARY 21 – Session 6, *Religious Professionals*
- MARCH 7 – Session 7, *Educating for Liberation*
- MARCH 21 – Session 8, *Innovations and Risk-Taking*
- APRIL 4 – Session 9, *Restoration and Reparations*
- APRIL 18 – Session 10, *Accountability and Resources*
- MAY 2 – Session 11, *Where Do we Go from Here?*

Currently, we are meeting on Zoom. Log in at <https://uuma.zoom.us/j/9797400824?pwd=WjNTUldoci9VWjNtMFNsNjBsMlZTZz09>. The meeting ID is 979 740 0824. The password is *zeandale*. Learn more from Jonalu Johnstone at revjonalu@uufm.net.



Interested friends are invited to

Path to Membership

*an opportunity to learn about the history of our
progressive faith, share your own spiritual journeys,
and expand your connections to our community.*

We meet on Zoom,
on Tuesday, February 16, at 4 pm.

Contact Rev Jonalu Johnstone at revjonalu@uufm.net,
or Shirley Hobrock at shirleyhobrock2@gmail.com,
for a link and sign-in information.

HELPFUL INFORMATION FOR MEMBERS AND FRIENDS

BUILDING USE AND SCHEDULING

The UUFM building is now available to reserve, with limited group size, length of use, and the expectation that those using the building will practice reasonable social distancing and cleaning following use. Please contact Susan Turner to schedule your meeting space, at 785 537-2349 or office@uufm.net.

MARCH NEWSLETTER DEADLINE

The deadline for submissions to the February edition of *The UUFM Voice* is Monday, **FEBRUARY 15**. Submissions received later may not be included in the newsletter. *If your group is meeting in a new way during the pandemic, please let us know* so that we can pass this information on to other members and friends who may want to participate. Send your newsletter contributions to Susan Turner at 785 537-2349 or office@uufm.net.

ADMINISTRATOR'S VIRTUAL HOURS

Office Administrator Susan Turner will be available during virtual office hours from 3 to 5 pm, on SATURDAYS in February. If you haven't already done so, download Zoom at <https://zoom.us>, then log in at <https://us02web.zoom.us/j/85495266852> any time between 3 and 5 pm. The meeting ID is 854 9526 6825. Contact Susan at any time at 785 537-2349 or office@uufm.net.

Contact Fellowship administrator Susan Turner at 785 537-2349 or office@uufm.net to **UPDATE YOUR MAILING ADDRESS, PHONE, or EMAIL**, or to **CANCEL YOUR SUBSCRIPTION** to this newsletter. You may also contact Susan to learn how to join our private **COFFEE AND CONVERSATIONS FACEBOOK** group.

If you've considered **BECOMING A MEMBER** of UUFM, ask Welcoming chair Shirley Hobrock at 785 776-3175 or shirleyjhobrock@hotmail.com, or Jonalu Johnstone at 785 537-2349 or revjonalu@uufm.net.

Fellowship members may receive **UU WORLD MAGAZINE**, without cost.

An audio version of *UU World* is available for those with vision or reading difficulties. To subscribe, contact Susan Turner at 785 537-2349 or office@uufm.net. Read *UU World* online at www.uuworld.org.

Join in discussions of interest; receive information on community events, and last-minute updates and announcements on our UUFM **EMAIL LIST**. Contact Susan Turner at office@uufm.net to subscribe.

Consider the convenience of **ELECTRONIC GIVING**. UUFM relies on the financial support of our congregation and automatic monthly contributions offer a simple and easy way to give on a regular basis. Learn more from Fellowship bookkeeper Sandy Nelson at 785 341-0135 or sandralounelson@yahoo.com. You can also make pledge payments, contribute to our General Operating fund, or give to our Helping Hands recipient directly, at uufm.net/donate. *Thank you!*

SUNDAY ANNOUNCEMENTS

Please contact fellowship administrator Susan Turner at 785 537-2349 or office@uufm.net, **NO LATER THAN WEDNESDAY EVENING** with announcements and information for inclusion in slides displayed before virtual Sunday morning services, from 10:30 to 10:45 am.

CARING FOR MEMBERS AND FRIENDS

Providing support to one another is one of the most important things we do as religious community. Our Caring Team is ready to support you, or help you in supporting others. If you're sick and could use someone to do errands, or can use any kind of assistance or support, please let us know at 785 537-2349 or office@uufm.net.

PARTICIPATE IN VIRTUAL MEETINGS AND SERVICES

Join us from home to participate in virtual Sunday services. We begin announcements at 10:30 am. The service follows at 10:45 am. First, download Zoom at <https://zoom.us>, then click into the Sunday service at <https://zoom.us/j/92604313401?pwd=OXIyeW1RQ0I4U1cQ1FpU0x2TlZgdz09>. Or call 346 248 7799 to listen on your phone. Meeting ID is 926 0431 3401, and the passcode is *zeandale*. Find helpful hints and clickable links at uufm.net/zoom/.

FEBRUARY♥2021 at UUFM

Sunday

Monday

Tuesday

Wednesday

Thursday

Friday

Saturday



1
9:30 AM WOMEN'S COFFEE
Jane Pelletier
mjanepelletier@gmail.com

2
3 TO 5 PM
JONALU JOHNSTONE
3:30 TO 4:30 PM
SANDY NELSON
uufm.net/contact-us

3
12 NOON
MEN'S LUNCH
Kathleen Oldfather
kjoldfather@gmail.com

4
9:30 AM
WOMEN'S COFFEE
3 TO 5 PM J JOHNSTONE
3:30 TO 4:30 PM S NELSON
uufm.net/contact-us
5:30 PM
DINNER CONVERSATION
Harriette Janke
harriettejanke@gmail.com

5

6
2 PM
SOCIAL ACTION TEAM
MTG
judydickelson@gmail.com
3 TO 5 PM
SUSAN TURNER
uufm.net/contact-us

7
10 AM
ZOOM INTO RE
Sandy Nelson, dre@uufm.net
10:45 AM SUNDAY SERVICE
Unforgetting Our History to Make Beloved Community
uufm.net/zoom/
4 PM RACIAL JUSTICE MTG
Rev Jonalu, revjonalu@uufm.net

8
9:30 AM WOMEN'S COFFEE
Jane Pelletier
mjanepelletier@gmail.com

9
3 TO 5 PM
JONALU JOHNSTONE
3:30 TO 4:30 PM
SANDY NELSON
uufm.net/contact-us
7 PM BOARD MEETING
Rob Morrison
william.robert.morrison@gmail.com

10
12 NOON
MEN'S LUNCH
Kathleen Oldfather
kjoldfather@gmail.com

11
9:30 AM
WOMEN'S COFFEE
3 TO 5 PM J JOHNSTONE
3:30 TO 4:30 PM S NELSON
uufm.net/contact-us
5:30 PM
DINNER CONVERSATION
Harriette Janke
harriettejanke@gmail.com

12

13
3 TO 5 PM
SUSAN TURNER
uufm.net/contact-us

14
10 AM
ZOOM INTO RE
Sandy Nelson, dre@uufm.net
10:45 AM SUNDAY SERVICE
Side with Love Sunday
uufm.net/zoom/

15
9:30 AM WOMEN'S COFFEE
Jane Pelletier
mjanepelletier@gmail.com

last minute
NEWSLETTER DEADLINE

16
3 TO 4 PM
JONALU JOHNSTONE
3:30 TO 4:30 PM
SANDY NELSON
uufm.net/contact-us
4 PM
PATH TO MEMBERSHIP
Shirley Hobrock
shirleyhobrock2@gmail.com

17
12 NOON
MEN'S LUNCH
Kathleen Oldfather
kjoldfather@gmail.com

18
9:30 AM
WOMEN'S COFFEE
3 TO 5 PM J JOHNSTONE
3:30 TO 4:30 PM S NELSON
uufm.net/contact-us
5:30 PM
DINNER CONVERSATION
Harriette Janke
harriettejanke@gmail.com

19

20
3 TO 5 PM
SUSAN TURNER
uufm.net/contact-us

21
10 AM
ZOOM INTO RE
Sandy Nelson, dre@uufm.net
10:45 AM SUNDAY SERVICE
Beloved Community: Not a Destination--A Way of Being
uufm.net/zoom/
4 PM RACIAL JUSTICE MTG
Rev Jonalu, revjonalu@uufm.net

22
9:30 AM WOMEN'S COFFEE
Jane Pelletier
mjanepelletier@gmail.com

23
3:30 TO 4:30 PM
SANDY NELSON
uufm.net/contact-us

24
12 NOON
MEN'S LUNCH
Kathleen Oldfather
kjoldfather@gmail.com

25
9:30 AM
WOMEN'S COFFEE
3:30 TO 4:30 PM
SANDY NELSON
uufm.net/contact-us
5:30 PM
DINNER CONVERSATION
Harriette Janke
harriettejanke@gmail.com

26
10 AM BOOK DISCUSSION
Susan Adamchak
sadamchak@kansas.net

27
3 TO 5 PM
SUSAN TURNER
uufm.net/contact-us

28
10 AM
ZOOM INTO RE
Sandy Nelson, dre@uufm.net
10:45 AM SUNDAY SERVICE
Being a Beacon
uufm.net/zoom/

