



OUR FEBRUARY SOUL MATTERS THEME EXPLORES

WIDENING THE CIRCLE ...

Is it possible that
being on the inside
leaves you out of the loop?
What if the margins
aren't narrow?
What if that space of exclusion
is also a position of perspective?
What if being shut out
allows you to understand the insiders
better than they understand themselves?

Why do so many seek the safety
of that inner circle anyway?
Don't we know that the circles
not only keep others out
but also the air?
Haven't we learned that
it's on the edge of circles
that hate makes its home?
So even if you weren't among the ones
who put the circle in place,
by allowing it to linger,
don't you carry the burden
of responsibility as well?

What if who we are
doesn't end at the barriers
of our own skin?
What if sin is believing
that you can put the puzzle together
with only the pieces that belong to you?
What if heaven is the moment you realize
that none of us can get there alone?

What if the only true freedom
lies in the willingness to
fight against that which imprisons
someone else?

And what if these all questions
are a matter of life and death?
Or is it a matter of dying to live?
After all, didn't the Nazarene say
we must lose our life in order to find it?
Haven't all the sages said the solitary self
must perish for the larger we to live?

If that is true
then let's widen the circle
until it breaks!
For as long as the circle exists
pieces and parts of ourselves
will always lie on the other side
of the line.

So let us push, pull,
twist and tear,
dig underneath
and climb over the top,
do whatever it takes to meet each other
face to face.
And having found each other,
let us stare
and struggle,
fight and forgive,
call in and call out,
until "me" and "you"
dissolves into "us."
Is there any other way we become whole?

-- from *Soul Matters*, adapted for UUUFM

FEBRUARY 2022 SUNDAY SERVICES

OUR SOUL MATTERS THEME IN FEBRUARY EXPLORES
WIDENING THE CIRCLE

FEBRUARY 6 "HOPE AND FAITH IN HUMANITY"

Pastor Isabel Call reflects, "Don't let institutional and environmental racism steal your spirit! A lot is going right in the world. Let's gather, on Zoom only through February 6, to remember and celebrate ALL that we have to live and fight for." Our convener is Marisa Larson at marisa.larson@gmail.com.

There will be no in-person attendance at Sunday services thru February 6. On February 6, please join us on Zoom. The Board, with our COVID Advisory Panel, will determine when it is safe to return to in-person meeting. Concurrent virtual services on Zoom will remain available, after in-person services resume.

FEBRUARY 13 "PSYCHOLOGY OF RACISM"

Dr Don Saucier is a University Distinguished Teaching Scholar in the Department of Psychology at Kansas State University. Dr Saucier will be speaking about antisocial and prosocial behaviors (e.g., prejudice and aggression vs giving and receiving help) and the individual differences and situational factors behind them. Our convener is Rob Morrison at william.robert.morrison@gmail.com.

FEBRUARY 20 "EMBODYING POWER"

Pastor Isa presents the reflection. Though we don't have control over much on an individual level, together we have a lot of power to influence the world around us. What does it mean to be a powerful person? A powerful people? Together, we'll experience the answers to these questions. Our convener is Dick Beeman at rbeeman@cox.net.

FEBRUARY 27 "FINDING JOY ALL AROUND"

Let us reflect on the ways we find joy. Our speaker is Dr Debra J Bolton (Ohkay Owingeh/Dine/Ute). She identifies as a teacher, geographer, social researcher, parent, partner, and a life-long student. Our convener is Larry Weaver at lweaver@phys.ksu.edu.

MASKS ARE REQUIRED in the Fellowship building for everyone age 5 and older, regardless of vaccination status.

UU FELLOWSHIP OF MANHATTAN

PO Box 910
Manhattan, KS 66505
(785) 537-2349

office@uufm.net / uufm.net

REV DR ISABEL CALL

pastor@uufm.net

JUDY NICKELSON, Board Chair

judy.nickelson@gmail.com

SANDY NELSON, Director of Religious Ed

DRE@uufm.net

RENEA BROWN, Music Director

reneareasoner@gmail.com

SUNDAY SERVICES begin at **10:45 AM** at
<https://zoom.us/j/92604313401?pwd=OXlyeW1RQ0I4U1cxQ1FpU0x2TlZqdz09>

or, join us at the Fellowship building,
at **481 ZEANDALE ROAD**.

INSIDE THIS ISSUE	PAGE
Note from Pastor Isa	3
KIFA ADVOCACY DAYS	3
Religious Ed / DRE's Hours	4
OWL Classes	4
RE Aluminum Collection	4
Activities, Events	5
AWed / FIREFLY OPEN CIRCLE	5
Social Action / Helping Hands	5
Fair Trade Coffee	5
Racial Justice Team	5
UUFM COVID POLICY/RESOURCES	6
Afghan Refugee Resettlement	7
Treasurer's Update	7
MIDAMERICA REGIONAL ASSEMBLY	7
Administrator's Office Hours	8
February Coffee Teams	8
February Calendar	9

COMING UP ...

Join us on Zoom for **ACTION WEDNESDAY** (AWed), on **FEBRUARY 9**. More on page 5.

Join the UUFM **RACIAL JUSTICE TEAM** Google Group for mtgs and announcements. More on page 5.

Review an **UPDATE FROM THE TREASURER**, on page 7.



UUFM is a
WELCOMING CONGREGATION
Learn more about the Welcoming Congregation initiative at
www.uua.org/lgbtq/welcoming/program

A NOTE FROM PASTOR ISA -- REV DR ISABEL CALL

Dear Ones,

Happy Groundhog Day! It's always such good timing. Right when I've started to accept the reality of winter, I'm reminded of the suggestion of spring. It will come, sooner or later. How are you handling the long wait for spring? And the long wait for being back in-person? I know it's hard for a lot of people to feel involved in Fellowship life during this time. I want to highlight a few opportunities here and stoke your hope for what will be possible in the future.



Switching back to Zoom-only Sunday Services is a bummer for some folks, but I am appreciating seeing your *full* faces. Honestly, compared to our masked multi-platform services,

I feel I'm getting to know you better because of the lively conversations before the service, afterwards in the large group, and then in coffee hour break-out rooms. On January 9, for example, we had a beautiful discussion about the service topic ("What Are We?") that wouldn't have happened in-person. (You can check out the recording if you missed it.) Our Action Wednesday gatherings (uufm.net/awed-gathering/) on Zoom are also extremely engaging in ways that wouldn't be possible in-person--we can cook and eat our own meals while listening to the same music and then play games in the comfort of our loungewear!

That said, I'm really looking forward to opportunities to meet in person, ideally with food and without masks. I'm grateful to the folks who greeted me in October, sharing stories and a meal. Once it's safe, I plan to reserve two or three times each month if you and your family would like to get together for a meal. I know this kind of connection with each other nourishes the good we're doing in the world. We set a table for each other, and then widen the circle from there.

The February theme of "Widening the Circle" will help us reflect on how to root in our own community while opening our doors. We know our commitments to hope, social engagement, and spiritual deepening is life-giving and life-saving. What accounts for the gap between our hopes and our dreams for inclusivity? Two excellent guest speakers, Dr. Don Saucier and Dr. Debra Bolton, will provide context and

an outside perspective. And I'll talk about our theologies of hope and power and the need for our Principles and Sources to reflect it, which is happening with the Article 2 Study Commission (uua.org/uuagovernance/committees/article-ii-study-commission).

Meanwhile, social and political change is afoot in Kansas. We have power together and can build more during the Kansas Interfaith Action Legislative Days (actionnetwork.org/events/kifa-2022-advocacy-days), February 15-17. We will have a significant group from the Racial Justice Team, either in-person or virtually, not only making our voice heard but building relationships with each other and other people of faith committed to our values. KIFA's 2022 Legislative Priorities (kansasinterfaithaction.org/updates/2022-kifa-leg-priorities) align squarely with the issues we care most about.

There's a lot of ways to be involved right now. You can also, always, reach out to me to brainstorm about how you can engage here, or to receive support for what's going on in your life. That's what I'm here for. Give me a call or an email, or sign up for a call, Zoom meeting, or in-person chat at calendly.com/pastorisa.

I'm delighted, proud, and hopeful as I put down roots with you here at UUFM. Thank you for your trust as we move into ministry together!

Pastor Isa

Contact Pastor Isabel at pastor@uufm.net, or call or text 785 748-2533.

2022 KIFA LEGISLATIVE ADVOCACY DAYS

You're invited to the 2022 KIFA (Kansas Interfaith Action) Advocacy Days, February 15 thru 17, virtually, and at the State Capitol in Topeka, to advocate for legislative priorities together! Mark your calendar to be a part of this movement to advance critical social, economic, and climate justice issues collectively. Find KIFA's 2022 Legislative Priorities at kansasinterfaithaction.org/updates/2022-kifa-leg-priorities. Learn more about this event, and register to attend, either virtually or in-person, at actionnetwork.org/events/kifa-2022-advocacy-days.



OUR WHOLE LIVES (OWL) FOR 7TH TO 9TH GRADES

Our Whole Lives (OWL) class for 7th-9th graders is happening in person at the fellowship. Sixteen students are meeting in the sanctuary so they can keep a safe distance apart along with masking. Once we begin in-person worship again, we ask that folks clear the sanctuary as quickly as possible so that OWL facilitators can set up the room.

This centerpiece of the OWL series provides a variety of engaging activities so that participants build values, interpersonal skills, and knowledge. The comprehensive approach speaks to participants' needs today and helps prepare them for a healthy and meaningful tomorrow.

OUR WHOLE LIVES (OWL) FOR 5TH AND 6TH GRADES

We anticipate offering the OWL 5/6 class next winter (January through March 2023). If you've got a student in that grade range and are interested in participating, please let Sandy know so that planning can begin. Contact Sandy at 785 341-0135 or dre@uufm.net.

RELIGIOUS EDUCATION CLASSES

Do you have an interest in engaging with our youth in a new way? Leading a class is a wonderful opportunity for both you and them! Please contact Sandy so we can start a conversation, at 785 341-0135 or dre@uufm.net.

ALUMINUM CAN COLLECTION CONTINUES!

Did you know that Michael Oldfather has been helping the RE kids collect aluminum cans for recycling--FOR YEARS? The money made from turning in the cans has provided funds for several causes dear to the kids' hearts. WE ARE STILL COLLECTING CANS! Have some cans to donate? Delivery is best, but we can arrange a pick up if you prefer. Contact Michael (mou812@ksu.edu) or Sandy (dre@uufm.net) for all the details.



REGISTER YOUR CHILD(REN)

Remember, all children must be registered for the 2021/2022 school year. Registration forms are available at <http://form.jotform.us/form/51486475507160>.

DRE'S SCHEDULE

Sandy will be available in the Fellowship office on **TUESDAYS** and **THURSDAYS**, from 3:30 to 4:30 pm.

Contact Sandy at 785 341-0135 or dre@uufm.net.

ACTIVITIES AND EVENTS – EVENTS ARE OPEN TO ALL

The Wednesday **LUUNCH BUUNCH** meets virtually EVERY WEDNESDAY, at 12 noon. If you would like an invitation to this Zoom gathering, please contact Kathleen Oldfather at 785 537-3738 or kjoldfather@gmail.com.

The **UU COFFEE GROUP** meets on Zoom THURSDAYS, at 9:30 am. Join us for morning coffee and conversation. Contact Jane Pelletier at 785 537-0954 or mjanepelletier@gmail.com, for an invitation.

The UUFM **BOOK DISCUSSION GROUP** meets Friday, FEBRUARY 25, at 10 am. Currently we are meeting on Zoom. To request a Zoom invitation, contact Susan Adamchak at sadamchak@kansas.net.

ACTION WEDNESDAY ON ZOOM

We're gathering again for Action Wednesday (formerly, the AWed potluck), now MEETING ON ZOOM, on the second Wednesday of each month, from 6 to 8 pm. On FEBRUARY 9, we begin at 6 pm, with music curated around our monthly Soul Matters theme, *Living with Intention*. Listen while cooking and eating dinner, camera on or off. For a shared food experience, you may want to prepare the *Creamy Zucchini and What's in the Fridge* recipe, provided at uufm.net/awed-gathering. All are welcome, whether or not you are currently part of a committee. Please *register now* at <https://tinyurl.com/AWedUUFM>.



FIREFLY OPEN CIRCLE -- TELL A FAIRY TALE DAY

To follow along with our practice of learning about other cultures and practices this year, we will celebrate "National Tell a Fairy Tale Day" on February 26! This will be a potluck around the fire (weather permitting), followed by storytelling and possibly crafting, music, and dancing (time permitting). This will also be a costume party. You may come dressed as your favorite fairy tale character! If you have a favorite fairy tale, share it during the storytelling. We meet from 5 to 8 pm, on February 26, at the Fellowship. Contact Mandy at 785-223-2383 or miriamale41@gmail.com

RACIAL JUSTICE TEAM

Pastor Isabel offers an invitation to participate in the UUFM Racial Justice Team. We'll be meeting on Zoom, Sunday, FEBRUARY 20, at 4 pm, and all are invited to join us. Join the meeting at <https://tinyurl.com/UUFMRacialJustice>. The passcode is 483641. The Racial Justice Team has a separate google group. If you want to be involved and you're not getting emails from *racialjusticeuufm*, Pastor Isabel can fix that! Let her know you'd like to join at pastor@uufm.net.

SOCIAL ACTION NEWS

HELPING HANDS

In FEBRUARY, Helping Hands contributions will be collected for the **KANSAS ABORTION FUND** (formerly, the Peggy Bowman Second Chance Fund), raising funds to ensure that all women and girls can get the abortions they seek. Learn more at kansasabortionfund.org/.

In January, Fellowship members and friends contributed Sunday morning collections to UFM's Project EXCELL. THANK You all for your generous donations!

Donate on-line to Helping Hands, or give to UUFM's General Operating fund, at uufm.net/donate/.



FAIR TRADE COFFEE

Equal Exchange whole bean, ground, and decaf coffees, and chocolate and tea are available for purchase at the Fellowship on Sundays. Learn more from Anne Cowan at 785 340-5001 or anne_cowan@sbcglobal.net.

Equal Exchange works in collaboration with the Unitarian Universalist Service Committee (uusc.org), following the standards and principles of fair trade on 100 percent of its products.

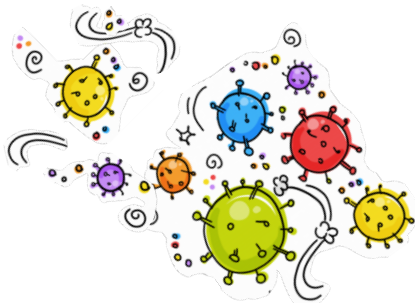


UUFM BLESSING BOX

UUFM is sponsoring a **BLESSING BOX** and **LITTLE FREE LIBRARY** at Wonder Workshop. Doug Walter reports our box has received notably increasing demand, especially in the past few weeks. To contribute shelf-stable food, cleaning and hygiene products, or children's and youth books, contact Doug at kbsi@cox.net. Or, drop by Wonder Workshop, at 506 S 4th Street, and stock the boxes with your items. Please remember, *financial support is vital to maintain a regular stock of staples*. You can donate funds to help support the boxes at uufm.net/donate/.

SOCIAL JUSTICE / ANTI-RACISM RESOURCES

Find a list of social justice and anti-racism resources at uufm.net/social-action-2/social-action-resources/. If you would like to suggest resources to add to the list, or have questions, please contact Marisa Larson at marisa.larson@gmail.com.



UUFM COVID RESOURCES

In an effort to keep our beloved UUFM community safe and informed in this time of COVID 19 SARS CoV-2 the following links to reputable sources have been compiled. Topics include testing, vaccine availability, isolation and quarantine as well as actions to take to help prevent the spread of the COVID virus.

CDC COVID INFORMATION CDC

<https://www.cdc.gov/coronavirus/2019-ncov/index.html>

PROTECT YOURSELF AND OTHERS

<https://www.cdc.gov/coronavirus/2019-ncov/prevent-getting-sick/prevention.html>

LOCAL CASE RATES RILEY, GEARY, POTTAWATOMIE

https://www.covidactnow.org/us/metro/manhattan_ks/?s=27181605

LOCAL TESTING RESOURCES

<https://www.rileycountyks.gov/1869/Get-Tested>

CDC - HOW DO I FIND A COVID-19 VACCINE?

<https://www.cdc.gov/coronavirus/2019-ncov/vaccines/How-Do-I-Get-a-COVID-19-Vaccine.html>

QUARANTINE AND ISOLATION

<https://www.cdc.gov/coronavirus/2019-ncov/your-health/quarantine-isolation.html>

UUFM COVENANT OF RIGHT RELATIONS AND CONFLICT RESOLUTION PROCESS

<https://uufm.net/wp-content/uploads/2011/07/Covenant-right-relations.pdf>

UUFM COVID POLICY AND RESOURCES -- DECEMBER 21, 2021, UPDATES [UUFM.NET/COVID-POLICY-AND-RESOURCES/](https://uufm.net/covid-policy-and-resources/)

Dear UUFM Members and Friends,

Thank you for all you've done to keep yourselves and each other healthy for almost two years now. During our second holiday season, we're holding up fairly well--but COVID continues to be a damper on our spirits and our activities. At this writing, we're anticipating a surge of cases due to the omicron variant, and we know that there is much more *we don't know* about how things will play out in the winter and coming seasons.

In this environment of uncertainty, our Board has been reassessing our COVID safety practices. We appointed a COVID Advisory Panel and have spent the past week reviewing and discussing their recommendations. On Sunday, December 19, 2021, the Board passed the following COVID Safety Policies unanimously:

- Masks are required indoors at all times by all participants over the age of 4, including speakers. This means no food or drink are allowed in the Fellowship. (Sips of water are ok as long as you replace your mask quickly.)
- No indoor singing, brass, or woodwinds, which includes choir performances and rehearsals and congregational hymn singing.
- All staff, RE providers, Sunday Service staffing volunteers, technology team members, and choir members are required to be vaccinated. Please send our administrator Susan Turner a copy of your vaccination card. Proof of vaccination from choir members is required in anticipation of being able to sing together indoors. We may find ways to gather outdoors and make recordings for Sunday Services.
- We strongly recommend that everyone eligible for vaccination get vaccinated. We request that any person who realizes they were positive for COVID at any in-person UUFM event notify the UUFM Board or the Minister so that the congregation can be advised to monitor for symptoms and seek testing as needed. When you let us know, we will maintain your confidentiality and offer assistance with contact tracing. The Minister is available for emotional support and will work with the Caring Team to help you with meals or other unmet needs.
- When you're indoors, we encourage you to maintain a 6-foot distance from others, as possible. We trust your good judgment, realizing that households may sit together and that childcare providers may need to be closer.
- We're doing our best to provide adequate ventilation with open windows and air filtration.
- Educate yourself and others about current conditions and resources. See UUFM Covid resources at uufm.net/covid-resources/ for more information.

The Board has asked for more guidance from the COVID Advisory Panel as to how, and under what circumstances, we can relax these restrictions. We are doing our best to reduce risk, but we know it can't be zero. By prioritizing tech improvements, we are improving the online Sunday Service experience, meaning there's always a safe alternative for connection. With this option, we're striving to find an acceptable level of risk at the Fellowship building.

Please be in touch with Pastor Isa or members of the Board if you have feedback or suggestions. You may find it useful to refer to the Unitarian Universalist Association's recommendations, www.uua.org/pandemics/gathering-guidance, from which we drew heavily. We care about your health--both physically and emotionally.

Love and Care, Pastor Isabel (pastor@uufm.net) and the UUFM Board

2022 MIDAMERICA REGIONAL ASSEMBLY

Registration is now open for virtual MidAmerica Regional Assembly (Saturday, APRIL 30, 9 am to 1 pm CT). There is a sliding fee scale between \$25 to \$50 and scholarships are available. Please register on the RA registration page (midamericauua.us17.list-manage.com/track/click?u=25d203369701e9f17332c7e4f&id=64078fa79b&e=e2f1108b1b)!

The keynote speaker, UU educator, consultant, and facilitator CB Beal, will present *The Glass is Refillable: Pandemic Exhaustion, Lifelong Faith Formation, and Preemptive Radical Inclusion*. The day will feature worship, keynote presentation and conversation, lunch break, business meeting, and time for social connection. This year we will be using the Whova platform, which improves security, accessibility, and ease of use. Upon registration, all participants will receive information on how to access Whova and learn how to get the most out of it.

AFGHAN REFUGEE RESETTLEMENT EFFORT

Some of you have expressed an interest in donating funds to help the Afghan refugees coming to Manhattan. We have set up a fund at the Fellowship for that purpose. You can make out a check to UUFM and note [in the memo line] that it is for the Afghan Refugee Fund. Or, donate electronically at uufm.net/donate.

Susan Adamchak is collecting and storing sheets, blankets, comforters and towels for the families. Currently, floor and desk lamps are needed. To arrange pick up or drop off of your items, contact Susan at sadamchak@kansas.net.

In addition, are collaborating with Kitchen Restore. They will accept donations of kitchen items, and will sort and pack them into kits we will be able to distribute to each family or living group. Learn about most needed kitchen items and where to bring them at https://nourishtogether.org/wp-content/uploads/2021/10/KitchenRestoreFlyer_10.5.2021links.pdf.

HELPING HANDS NOMINATIONS

It is time to select our Helping Hands recipients for fiscal year 2022/23. Do you have a favorite non-profit that you would like us to support?

RETURN NOMINATIONS BY THE MIDDLE OF FEBRUARY. Selection will be based on non-profits that are most needy and providing direct services to individuals. Please send your nomination to Kathy Swenson at swenson.home@gmail.com.

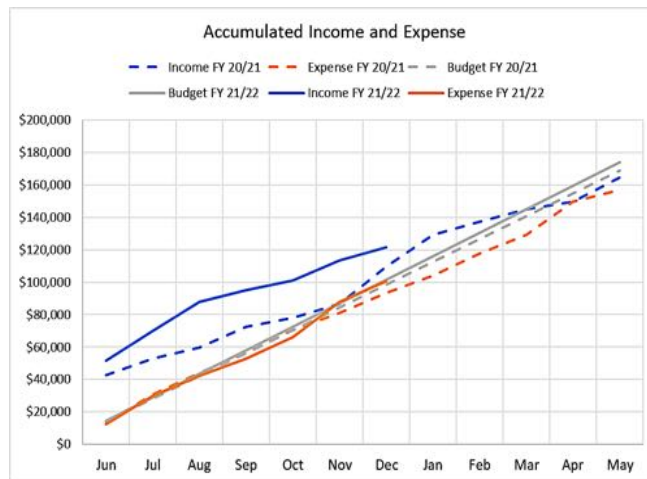
UPDATE FROM THE TREASURER

It is the end of the calendar year and time for me to give you an update on our UUFM finances. I apologize that I am going to use a lot of numbers. I also hate to have such a focus on money, since everyone is in different financial circumstances and there are so many other critical contributions members make to the Fellowship. But I am the Treasurer, so here goes.

INCOME AND EXPENSES: When reviewing these income numbers, remember that we always start the year with a lot of income because some members make their entire pledge payment at the beginning of the year.

Our budget for this year (June 2021 through May 2022) is \$173,811. And our current endowment and bank holdings total \$1,002,876. In December our income was \$8,132 and our expense was \$12,729. Total income so far this year is \$121,421 and total expense is \$100,585. At this time last year total income was \$109,734 and total expense was \$93,514, so we are doing better than last year. As long as we continue on this track, we should meet our budget. You can see these numbers plotted in the chart below.

Our budget anticipated that total income would not cover all expenses and included a planned withdrawal of \$22,311 from the endowment. If we can manage to reach an average income of \$10,500 for the next five months, we can meet our budget without withdrawing from the endowment.



TAX INFORMATION: I am actively working on the tax documents. This next week you should receive a letter that documents your contributions for the past calendar year. I will also include information on donations for our current UUFM fiscal year.

To learn more about Fellowship finances, contact Fellowship Treasurer Dan Swenson at 785 341-1973 or swenson.home@gmail.com.

GREETING TEAMS

There will be no in-person attendance at Sunday services on February 6. The Board, with our COVID Advisory Panel, will determine when it is safe to resume meeting in-person. Greeting teams will be notified by email, by the Tuesday before their assigned date.

Feb 13: Mark Mayfield, Susan Adamchak, and Pat Embers

Feb 20: Les Loschky, Harriette Janke, and Diane Barker

Feb 27: Chris Bailey, Betty Banner, and Judy Exdell

Learn more about coffee and greeting volunteers from Shirley Hobrock at 785 776-3175 or shirleyhobrock2@gmail.com.

BUILDING USE AND SCHEDULING

The UUFM building is now available to reserve, with limited group size, length of use, and the expectation that those using the building will practice reasonable social distancing and cleaning following use. Please contact Susan Turner to schedule your meeting space, at 785 537-2349 or office@uufm.net.

Administrator's Schedule

Tuesday, Feb 1 - 12 to 5 pm

Thursday, Feb 3 - 12 to 5 pm

Monday, Feb 7 - 12 to 5 pm

Tuesday, Feb 8 - 12 to 5 pm

Thursday, Feb 10 - 12 to 5 pm

Monday, Feb 14 - 12 to 5 pm

Tuesday, Feb 15 - 12 to 5 pm

Thursday, Feb 17 - 12 to 5 pm

Monday, Feb 21 - 12 to 5 pm

Tuesday, Feb 22 - 12 to 5 pm

Thursday, Feb 24 - 12 to 5 pm

Monday, Feb 28 - 12 to 5 pm

Drop in at the Fellowship during Susan Turner's office hours or call 785 537-2349. She may be reached at any time at office@uufm.net.

HELPFUL INFORMATION FOR MEMBERS AND FRIENDS

Contact Fellowship administrator Susan Turner at 785 537-2349 or office@uufm.net to **UPDATE YOUR MAILING ADDRESS, PHONE, or EMAIL**, or to **CANCEL YOUR SUBSCRIPTION** to this newsletter. You may also contact Susan to learn how to join our private **COFFEE AND CONVERSATIONS FACEBOOK** group.

If you are considering **BECOMING A MEMBER** of UUFM, learn more from our Welcoming chair Shirley Hobrock at shirleyhobrock@hotmail.com or 785 776-3175.

Fellowship members may receive **UU WORLD MAGAZINE**, without cost.

An audio version of *UU World* is available for those with vision or reading difficulties. To subscribe, contact Susan Turner at 785 537-2349 or office@uufm.net. Everyone can read *UU World* articles online at www.uuworld.org.

Join in discussions of interest; receive information on community events, and last-minute updates and announcements on our UUFM **EMAIL LIST**. Contact Susan Turner at office@uufm.net to subscribe.

Consider the convenience of **ELECTRONIC GIVING**. UUFM relies on the financial support of our congregation and automatic monthly contributions offer a simple and easy way to give on a regular basis. Learn more from Fellowship bookkeeper Sandy Nelson at 785 341-0135 or sandralounelson@yahoo.com. You can also make pledge payments, contribute to our General Operating fund, or give to our Helping Hands recipient directly, at uufm.net/donate. *Thank you!*

SUNDAY ANNOUNCEMENTS

Please contact fellowship administrator Susan Turner at 785 537-2349 or office@uufm.net, **NO LATER THAN WEDNESDAY EVENING** with announcements and information for inclusion in the Sunday morning order of service, and Sunday announcement slides.

CARING FOR MEMBERS AND FRIENDS

Providing support to one another is one of the most important things we do as religious community. Our Caring Team is ready to support you, or help you in supporting others. If you're sick and could use someone to do errands, or can use any kind of assistance or support, please let us know at 785 537-2349 or office@uufm.net.

MARCH NEWSLETTER DEADLINE

The deadline for submissions to the March edition of *The UUFM Voice* is Tuesday, **FEBRUARY 15**. Submissions received later may not be included in the newsletter. *If you cannot get your submission in by the February 15 deadline, please contact Susan to arrange a deadline extension.* Send your newsletter contributions to Susan Turner at 785 537-2349 or office@uufm.net.

FEBRUARY 2022 at UUFM

Sunday

Monday

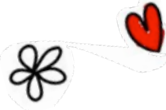
Tuesday

Wednesday

Thursday

Friday

Saturday



1

12 TO 5 PM
SUSAN TURNER

3:30 TO 4:30 PM
SANDY NELSON at
Fellowship, 785 537-2349

2

12 NOON LUUNCH BUUNCH
Kathleen Oldfather
kjoldfather@gmail.com

3

9:30 AM
UU COFFEE
Jane Pelletier
mianepelletier@gmail.com

12 TO 5 PM
SUSAN TURNER

3:30 TO 4:30 PM
SANDY NELSON at
Fellowship, 785 537-2349

4

7 AM HAPPY
KITCHEN breakfast
St Paul's Episcopal Church
Tom Phillips, twp1@ksu.edu

5

6

10:45 AM SUNDAY SERVICE
Hope and Faith in Humanity
Pastor Isabel

7

12 TO 5 PM
SUSAN TURNER at
Fellowship, 785 537-2349

8

12 TO 5 PM S TURNER
3:30 TO 4:30 PM S NELSON
785 537-2349

7 PM BOARD MEETING
Judy Nickelson
judy Nickelson@gmail.com

9

12 NOON LUUNCH BUUNCH
Kathleen Oldfather
kjoldfather@gmail.com

6 PM ACTION WEDNESDAY
on Zoom
<https://tinyurl.com/AWedUUFM>

10

9:30 AM
UU COFFEE

12 TO 5 PM
SUSAN TURNER

3:30 TO 4:30 PM
SANDY NELSON at
Fellowship, 785 537-2349

11

7 AM HAPPY
KITCHEN breakfast
St Paul's Episcopal Church
Tom Phillips, twp1@ksu.edu

12

13

10:45 AM SUNDAY SERVICE
Psychology of Racism
Dr Don Saucier

14

12 TO 5 PM
SUSAN TURNER at
Fellowship, 785 537-2349

15

12 TO 5 PM
SUSAN TURNER

3:30 TO 4:30 PM
SANDY NELSON at
Fellowship, 785 537-2349

16

12 NOON LUUNCH BUUNCH
Kathleen Oldfather

FEBRUARY 15 THRU 17
KIFA ADVOCACY DAYS
actionnetwork.org/events/kifa-2022-advocacy-days

17

9:30 AM
UU COFFEE
Jane Pelletier
mianepelletier@gmail.com

12 TO 5 PM
SUSAN TURNER

3:30 TO 4:30 PM
SANDY NELSON at
Fellowship, 785 537-2349

18

7 AM HAPPY
KITCHEN breakfast
St Paul's Episcopal Church
Tom Phillips, twp1@ksu.edu

19

20

10:45 AM SUNDAY SERVICE
Embodying Power
Pastor Isabel

4 PM RACIAL JUSTICE mtg

21

12 TO 5 PM
SUSAN TURNER at
Fellowship, 785 537-2349

22

12 TO 5 PM
SUSAN TURNER

3:30 TO 4:30 PM
SANDY NELSON at
Fellowship, 785 537-2349

23

12 NOON LUUNCH BUUNCH
Kathleen Oldfather
kjoldfather@gmail.com

24

9:30 AM
UU COFFEE

12 TO 5 PM
SUSAN TURNER

3:30 TO 4:30 PM
SANDY NELSON at
Fellowship, 785 537-2349

25

7 AM HAPPY
KITCHEN breakfast
St Paul's Episcopal Church
Tom Phillips, twp1@ksu.edu

10 AM BOOK DISCUSSION
Susan Adamchak
sadamchak@kansas.net

26

5 TO 8 PM
FIREFLY OPEN CIRCLE
TELL A FAIRY TALE DAY
Fellowship fire circle
potluck; Mandy Ryan
miriametele41@gmail.com

27

10:45 AM SUNDAY SERVICE
Finding Joy All Around
Dr Debra Bolton

28

12 TO 5 PM
SUSAN TURNER at
Fellowship, 785 537-2349

