



THE

UUMF VOICE

APRIL 2022

VOLUME 60, ISSUE 11

OUR APRIL SOUL MATTERS THEME EXPLORES

AWAKENING ...

You live like this, sheltered, in a delicate world, and you believe you are living. Then you read a book (Lady Chatterley, for instance), or you take a trip, or you talk with [someone], and you discover that you are not living, that you are hibernating... Monotony, boredom, death. Millions live like this (or die like this) without knowing it. They work in offices. They drive a car. They picnic with their families. They raise children. And then some shock treatment takes place, a person, a book, a song, and it awakens them and saves them from death. -- Anais Nin

The breeze at dawn has secrets to tell you.

Don't go back to sleep. -- Rumi

We all know what it was like. The world was alive once. When we were little. The trees whispered words. Animals spoke to us with their eyes. Playgrounds could become castles. The stars somehow told us we were special. Life could speak.

The magic wasn't imprisoned in childhood. We've all had adult moments when we've "come alive." Wonderfully lost in our work, our creativity or a kiss. Time both stopped and was set on fire.

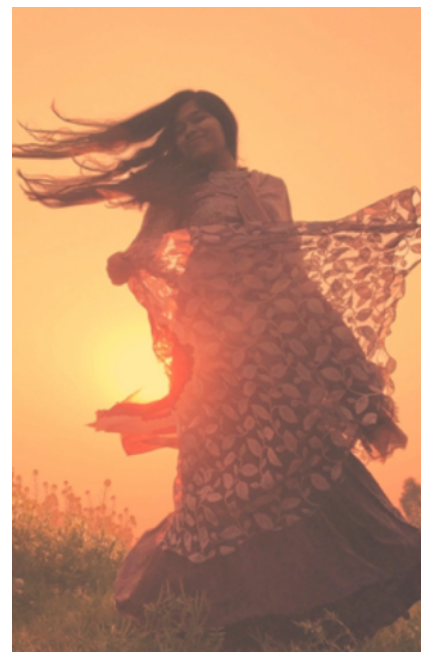
It happened as well in moments of alignment. When our inner life and outer life fell into step. We were finally "us." Everything was clear, and enough.

There it was in the flower too. Actually, in so many simple things: freshly baked bread, blackberries, a deer standing still staring at us without blinking, our children laughing. For those fleeting moments, we lacked nothing. We felt gifted beyond comprehension. We knew what "rich" really means.

And it's not that these moments of awakening don't still happen. There's just something about how we've got things organized that places a fog between them and us. As Anais Nin says, we believe we are living, but really aren't. It's surprising actually-- how easily we let dullness sink in, how often we allow life to be muted.

But there are always those memories. That whispering tree. That magic kiss. That moment of being true to ourselves. That priceless taste of blackberry juice on our tongue. They can be brought back. Yes, we forget what it feels like to be fully awake and for life to be fully alive. But forgetting means we can remember. It means we can help each other remember. And remembering opens a door for us to find our way back.

So maybe the message this month isn't simply, "Awaken!" but also, "Remind!" We need to tell our stories so others remember theirs. We need to take each other back in time, so we can fully inhabit our present. It's no small thing. On our own, we are so easily convinced being wide awake was a delusion, so easily fooled into thinking that life never really felt that good or seemed so clear. But with help, we wake up. We remember what it is like for life to shimmer. And for us to shimmer too.



APRIL 2022 SUNDAY SERVICES

OUR SOUL MATTERS THEME IN APRIL EXPLORES
AWAKENING

APRIL 3 "THE STRENUOUS CONTOURS OF ENOUGH"

Pastor Isabel reflects, "Ramadan begins April 2, and we're in the thick of Lent. What do these religious traditions have to teach us about accessing the truth of abundance through our human limitations?" Our convener is Chris Bailey at meadbailey@gmail.com.

APRIL 10 "WAKING UP, SHOWING UP"

Pastor Isabel presents the reflection, "Your personal spiritual awakening is an integral part of humanity's collective capacity to show up and interrupt the various crises of our era. It matters that we live and breathe here and now. Let's make the most of it." Our convener is Tom Phillips at twp1@ksu.edu.

2022 ANNUAL MEETING: Following the April 10 service, we'll gather at 1 pm, on *Zoom only*, for our Annual Meeting. Voting members (anyone who signed the UUFM Membership Book before March 11, 2022) are urged to take part in this discussion of our Fellowship's business. Find details on pages 6 and 7.

APRIL 17 "ALIVE AGAIN, TODAY"

Pastor Isabel shares the reflection. We celebrate Easter and Earth Day by immersing in the poetry of e e cummings and the theology of Henry Nelson Wieman. Our convener is Larry Weaver at lweaver@phys.ksu.edu.

EASTER POTLUCK: Following the April 17 service, we resume the tradition of our annual Easter Potluck meal. We'll eat outside, for safety's sake. Learn more on pages 4 and 5.

APRIL 24 "AWAKENING"

Writing poetry can be fun and inspiring--it has the potential to reveal and restore. In Mary Pinard's (of Babson College) reflection, she will discuss how certain poetic forms can provide guidance to the creative process, while showcasing her own poems. She ends with a couple of prompts for participants to try on their own. Our convener is Rob Morrison, who can be reached at william.robert.morrison@gmail.com.

HIGH-QUALITY MASKS, SUCH AS A KN95 OR N95, ARE REQUIRED
in the Fellowship building for everyone age 4 and older,
regardless of vaccination status.



**UUFM is a
WELCOMING CONGREGATION**
Learn more about the Welcoming Congregation initiative at
www.uua.org/lgbtq/welcoming/program

UU FELLOWSHIP OF MANHATTAN

PO Box 910
Manhattan, KS 66505
(785) 537-2349

office@uufm.net / uufm.net

REV DR ISABEL CALL
pastor@uufm.net

JUDY NICKELSON, Board Chair
judynickelson@gmail.com

SANDY NELSON, Director of Religious Ed
DRE@uufm.net

RENEA BROWN, Music Director
reneareasoner@gmail.com

SUNDAY SERVICES begin at **10:45 AM** at
<https://zoom.us/j/92604313401?pwd=OXlyeW1RQ0I4U1cxQ1FpU0x2TlZqdz09>

or, join us at the Fellowship building,
at **481 ZEANDALE ROAD.**

| INSIDE THIS ISSUE | PAGE |
|--|------|
| Note from Pastor Isa | 3 |
| STEWARDSHIP / LITTLE APPLE PRIDE | 3 |
| Religious Ed / DRE's Hours | 4 |
| OWL Classes / EASTER POTLUCK | 4 |
| Events / ACTION WEDNESDAY | 5 |
| AWed / Firefly Open Circle | 5 |
| Social Action / Helping Hands | 5 |
| Fair Trade Coffee | 5 |
| HELPING HANDS SELECTION MTG | 5 |
| UUFM COVID Policy/Resources | 6 |
| Annual Mtg Agenda/ UUFM Singers .. | 6 |
| ANNUAL MTG DETAILS | 7 |
| BUDGET, BOARD OFFICERS, SIGN-IN ... | 7 |
| COVENANT OF RIGHT RELATIONS | 8-9 |
| Administrator's Office Hours | 10 |
| April Coffee Teams | 10 |
| April Calendar | 11 |

COMING UP ...

Join us on Zoom for **ACTION WEDNESDAY** (AWed), Wednesday,
APRIL 13. More on page 5.

Find a sign-in link and review details for discussion at our 2022 **ANNUAL MTG**, Sunday, **APRIL 10.** See pages 6 and 7.

Join us for our annual **EASTER POTLUCK**, Sunday, **APRIL 17**, on pages 4 and 5.

A NOTE FROM PASTOR ISA -- REV DR ISABEL CALL

*Waking up this morning I smile.
A full, fresh, new day is before me.
I vow to live fully in each moment
and look upon all beings with eyes of compassion.*

These words have been with me since childhood, when I read a version of them in Thich Nhat Hanh's *The Heart of the Buddha's Teaching*. Some mornings, I remember them before I open my eyes. Some mornings, I say them to myself in joy, already excited about the day ahead. Other days, when both sides of the bed are the wrong side, they are more of a plea.

To celebrate our monthly theme, Awakening, and the fact that April is National Poetry Month, I invite you to take a moment to pause and craft an answer to one or both of the following questions. (Bonus points if you can make your answer a 10-word poem.)

- *How did you wake up this morning?*
- *How do you want to wake up tomorrow morning?*

Our conveners for the month shared these responses:

- I hope to wake up to another good fun day.
- Anticipation of a smooth comfortable day for action with intention
- Too much. Let's outline the review I need to write.
- Is it morning yet? Yes. But must I start right now?

Awakening can be a glorious slate-clearing epiphany. But sometimes our problems, challenges, and worries hang on, preventing us from feeling refreshed. This month we'll explore what agency we have to move from fatigue into awakening. And we'll celebrate the fact that sometimes we're not in control: sometimes awakening comes out of the blue, not scheduled like the sunrise or the arrival of spring.

Our Christian neighbors celebrate Easter this month: a holiday commemorating the shocking reawakening of a community wracked by grief following the death of their rabbi. After seeing Jesus killed, they gave up their hope for his presence, friendship, and leadership. But he came back. My favorite interpretation of this supernatural story is that it represents the people's realization that their community was stronger than their oppressive society. This holiday makes sense during spring, because spring always shows us that no matter how dead the world is, life returns.

So I hope, and expect, that sometime this month you will discover something glorious about our shared world, despite all the difficult news, and feel the need to celebrate it. I hope, and expect, that we'll be celebrating a successful stewardship campaign and a satisfying Annual Meeting. Come, bring your wonder and your gratitude to our Easter Celebration and

Potluck, April 17th. We'll have a morning of regenerative poetry in the sanctuary while the Easter bunny hides the eggs, and then we'll head outdoors for festivities. Adults are invited to join in on the egg hunt--read our RE column for the skinny.

We know there are challenges ahead, but this month, may we open our hearts to joy. Wake up, come out, and smile. Let the earth remind us of all that is good. Pause long enough to find delight.

In joy,

Pastor Isa

Contact Pastor Isabel at pastor@uufm.net, or call or text 785 748-2533. To schedule a Zoom meeting with Isabel, go to calendly.com/pastorisa. If available times don't work for you, please contact Isabel to arrange a better time.

STEWARDSHIP GRATITUDE

Thanks to everyone who attended a stewardship small group conversation or sent in your pledge! We are counting on you--that big collective UU-you--to make real our intention to live into an abundant new fiscal year. Stay tuned during Sunday Services and at the Annual Meeting for updates on how fundraising is going, and please submit your pledges if you haven't already. Talk to UUFM Treasurer Dan Swenson at swenson.home@gmail.com or 785 341-1973, to learn more about pledging.



LITTLE APPLE PRIDE 2022

Come help UUFM participate in the annual Little Apple Pride Parade and Festival, Saturday, APRIL 23, from 11:30 am to 4 pm. Walk in the parade with rainbow flags and our UUFM banner, staff the UUFM table at City Park, or help with set-up or take down. Please let Marisa Larson know how you'd like to participate and when you can volunteer, at 240 305-0895 or marisa.larson@gmail.com.

SOCIAL JUSTICE / ANTI-RACISM RESOURCES

Find a list of social justice and anti-racism resources at uufm.net/social-action-2/social-action-resources/. If you would like to suggest resources to add to the list, or have questions, please contact Marisa Larson at marisa.larson@gmail.com.

EASTER -- POTLUCK PICNIC ON SUNDAY, APRIL 17

Easter is a time of REbirth, REnewal, REMembering ... please join us in adding RETurning to the list! Return to the Fellowship for an Easter celebration and potluck (outside). Not ready to share food? That's okay, you can brown-bag it by bringing your own.

We'll serve up an egg hunt in the UUFM tradition.* What will the magic word be? Come join the hunt, find the clues, and celebrate your success with prizes and treats.

It's not just for kids! Did you experience egg hunts of old when you were a child? The big kids always got all the eggs and you got none? The UUFM egg hunt is the perfect opportunity for adults to REnew their faith in humanity (or just egg hunts). Come join the fun!

** (At UUFM each egg hunter finds a special set of 6 eggs--and only those 6 eggs--each with a different letter attached. Once the eggs are found, all the letters combine to spell a secret word. Once you've got the secret word, you can turn in your eggs and choose from many prizes.)*

OUR WHOLE LIVES (OWL) FOR 7TH TO 9TH GRADES

Our Whole Lives (OWL) class for 7th-9th graders wraps up at the end of the month. Many thanks for your help clearing the sanctuary quickly so that OWL facilitators--Molly McGaughey, Matt Campbell--could set up the room.

This centerpiece of the OWL series provides a variety of engaging activities so that participants build values, interpersonal skills, and knowledge. The comprehensive approach speaks to participants' needs today and helps prepare them for a healthy and meaningful tomorrow.

OUR WHOLE LIVES (OWL) FOR 5TH AND 6TH GRADES

We anticipate offering the OWL 5/6 class next winter (January through March 2023). If you've got a student in that grade range and are interested in participating, please let Sandy know so that planning can begin. Contact Sandy at 785 341-0135 or dre@uufm.net.



then it
was spring;
and in
spring
anything
may happen.
absolutely
anything.
ee cummings

REGISTER YOUR CHILD(REN)

Remember, all children must be registered for the 2021/2022 school year. Registration forms are available at <http://form.jotform.us/form/51486475507160>.

DRE's SCHEDULE

Director of Religious Education Sandy Nelson will be available in the Fellowship office on **TUESDAYS** and **THURSDAYS**, from 3:30 to 4:30 pm.

Contact Sandy at 785 341-0135 or dre@uufm.net.

ACTIVITIES AND EVENTS – EVENTS ARE OPEN TO ALL

The Wednesday **LUUNCH BUUNCH** meets virtually EVERY WEDNESDAY, at 12 noon. If you would like an invitation to this Zoom gathering, please contact Kathleen Oldfather at 785 537-3738 or kjoldfather@gmail.com.

The **UU COFFEE GROUP** meets on Zoom THURSDAYS, at 9:30 am. Join us for morning coffee and conversation. Contact Jane Pelletier for an invitation at 785 537-0954 or mjanepelletier@gmail.com.

The UUFM **BOOK DISCUSSION GROUP** meets Friday, APRIL 29, at 10 am. Currently we are meeting on Zoom. To request a Zoom invitation, contact Susan Adamchak at sadamchak@kansas.net.

ACTION WEDNESDAY ON ZOOM

We're gathering for Action Wednesday (formerly, the AWed potluck), now MEETING ON ZOOM, on the second Wednesday of each month, from 6 to 8 pm. On APRIL 13, we begin at 6 pm, with music curated around our monthly Soul Matters theme, *Awakening*. Listen while cooking and eating dinner, camera on or off. For a shared food experience, you may want to try the communal recipe, at uufm.net/awed-gathering. Please register at tinyurl.com/AWedUUFM.



FIREFLY OPEN CIRCLE -- SATURDAY, APRIL 30

In 2022, the Firefly Open Circle will be exploring religious and seasonal celebrations from cultures around the world. On Saturday, APRIL 30, we meet around the Fellowship fire circle from 5 to 8 pm, beginning with a potluck dinner and craft or story based on that month's culture, followed by ritual. We'll conduct a BLACK MOON RITUAL, shedding "old" thought patterns, habits, and perceptions that we do not want to carry with us into the light half of the year. Learn more from Mandy at sparkofdrakaina@yahoo.com.

RACIAL JUSTICE TEAM -- SUNDAY, APRIL 17

Pastor Isabel invites all to participate in the UUFM Racial Justice Team. We'll be meeting on Zoom, Sunday, APRIL 17, at 4 pm, and all are invited. Join the meeting at <https://tinyurl.com/UUFMRacialJustice>. The passcode is 483641. Learn more from Pastor Isa at pastor@uufm.net.

EASTER POTLUCK RETURNS -- SUNDAY, APRIL 17

Return to the Fellowship for an Easter celebration and potluck (outside). Not ready to share food? That's okay, you can brown-bag it by bringing your own. Parents, ask Sandy about the Easter Egg Hunt, at dre@uufm.net.



SOCIAL ACTION NEWS

HELPING HANDS

In APRIL, Helping Hands contributions will be gathered for the **BOYS AND GIRLS CLUB** of Manhattan, whose mission is to inspire and enable all young people to reach their full potential as productive, caring and responsible citizens. Learn more at www.bgclubmanhattan.com/.

In March, Fellowship members and friends contributed Sunday morning collections to Wonder Workshop. THANK You all for your generous donations! Donate on-line to Helping Hands, or give to UUFM's General Operating fund, at uufm.net/donate/.

FAIR TRADE COFFEE



Equal Exchange whole bean, ground, and decaf coffees, and chocolate and tea are available for purchase at the Fellowship on Sundays. Learn more from Anne Cowan at 785 340-5001 or anne_cowan@sbcglobal.net.

Equal Exchange works in collaboration with the Unitarian Universalist Service Committee (uusc.org), following the standards and principles of fair trade on 100 percent of its products.

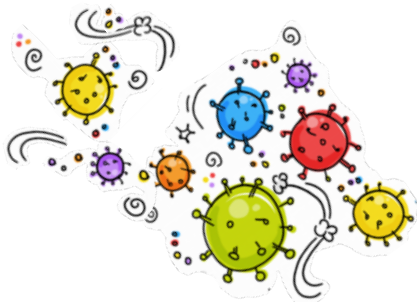


UUFM BLESSING BOX

UUFM is sponsoring a **BLESSING BOX** and **LITTLE FREE LIBRARY** at Wonder Workshop. Doug Walter reports our box has received notably increasing demand, especially in the past few weeks. To contribute shelf-stable food, cleaning and hygiene products, or children's and youth books, contact Doug at kbsi@cox.net. Or, drop by Wonder Workshop, at 506 S 4th Street, and stock the boxes with your items. Please remember, *financial support is vital to maintain a regular stock of staples*. You can donate funds to help support the boxes at uufm.net/donate/.

HELPING HANDS MEETING

If you would like to participate in choosing recipients for the 2022/23 Helping Hands monthly offerings, please contact Kathy Swenson at swenson.home@gmail.com or text 785 341-2846. We will meet early in April. Include times and days that are most convenient for you to meet.



UUFM COVID RESOURCES

In an effort to keep our beloved UUFM community safe and informed in this time of COVID 19 SARS CoV-2 the following links to reputable sources have been compiled. Topics include testing, vaccine availability, isolation and quarantine as well as actions to take to help prevent the spread of the COVID virus.

CDC - COVID INFORMATION

<https://www.cdc.gov/coronavirus/2019-ncov/index.html>

PROTECT YOURSELF AND OTHERS

<https://www.cdc.gov/coronavirus/2019-ncov/prevent-getting-sick/prevention.html>

LOCAL CASE RATES RILEY, GEARY, POTTAWATOMIE

<https://www.covidactnow.org/us/metro/manhattan ks/?s=27181605>

LOCAL TESTING RESOURCES

<https://www.rileycountyks.gov/1869/Get-Tested>

CDC - HOW DO I FIND A COVID-19 VACCINE?

<https://www.cdc.gov/coronavirus/2019-ncov/vaccines/how-do-i-get-a-covid-19-vaccine.html>

QUARANTINE AND ISOLATION

<https://www.cdc.gov/coronavirus/2019-ncov/your-health/quarantine-isolation.html>

UUFM COVENANT OF RIGHT RELATIONS AND CONFLICT RESOLUTION PROCESS

<https://uufm.net/wp-content/uploads/2011/07/Covenant-right-relations.pdf>

UUFM SINGERS

Choir members, be on the lookout for emails from Music Director Renea Brown regarding the Easter service on April 17, and the Mother's Day service on May 8. We will be recording choir pieces for these Sundays. We are in desperate need of SPECIAL MUSIC, especially non-vocal music. Please email Renea, at reneareasoner@gmail.com to sign-up for a Sunday if you are interested, or to learn how you can become part of the UUFM Singers, our wonderful choir.

2022 ANNUAL MEETING AGENDA -- SUNDAY, APRIL 10, AT 1 PM, ON ZOOM

Opening Words and Chalice Lighting – Pastor Isabel Call

Approval of 2021 Annual Meeting Minutes (uufm.net/annualmtg2021minutes/)

Approval of October 2021 Congregational Mtg Minutes (uufm.net/congregationalmtg9-12-2021/)

Reports:

- Executive Board Report - Judy Nickelson, Chair
- Minister's Report - Pastor Isabel Call
- Treasurer's Report - Dan Swenson
- Finance/Stewardship - Chris Bailey
- Sunday Services - Sarah Desmet/Rob Morrison
- Building and Grounds - Lindsay Smith
- Social Action - Kathy Swenson
 - Racial Justice -
 - Manhattan Refugee Resettlement Team - Susan Adamchak
- Membership/Hospitality (tinyurl.com/MembershipSocial) - Shirley Hobrock
- Caring (tinyurl.com/CaringCmte) - Kathleen Oldfather
- Social - no chair
- COVID Advisory Panel - Amy Betz
- Explanation of Zoom voting procedure - Rob Morrison

Business:

- Election of new Board members
 - Presentation of Slate of Candidates - Rob Morrison
 - Nominations from the floor
- Presentation and Approval of 2022-23 Budget
- Other new business

Announcements and Closing Comments

Call to Adjourn

Members must sign in, at tinyurl.com/AnnualMtg2022/, before the meeting begins on Sunday, April 10, at 1 pm. Please review all Annual Mtg information on pages 6 and 7 of this newsletter.

Our **ANNUAL MEETING** will be held following the Sunday service on **APRIL 10**, at 1 pm. We will meet on Zoom only, at 1 pm, to allow those who attend the Sunday service in-person time to return home and sign-in. Members are urged to take this opportunity to participate in the future of our Fellowship, as we discuss our hopes for fiscal year 2022/2023 (June 1, 2022 thru May 31, 2023). Please review the information provided to familiarize yourself with items to be discussed and voted upon.

PROPOSED FY 2022/2023 UUFM BUDGET MEMBERS MUST SIGN IN BEFORE MEETING BEGINS, AT [TINYURL.COM/ANNUALMTG2022](https://tinyurl.com/AnnualMTG2022)

| UUFM Budget | FY 21/22 | FY 22/23 | Change |
|-------------------------------|------------------|------------------|--------------|
| Income | | | |
| Contributions-Cash | \$500 | \$500 | 0.0% |
| Contributions-Non-Pledge | \$3,000 | \$5,500 | 83.3% |
| Contributions-Pledges | \$145,000 | \$160,000 | 10.3% |
| Fund Raising | \$2,000 | \$2,000 | 0.0% |
| Other Income | \$1,000 | \$500 | -50.0% |
| Endowment Distribution | \$22,311 | \$23,841 | 6.9% |
| Total Income | \$173,811 | \$192,341 | 10.7% |
| Expenses | | | |
| Administration | \$3,150 | \$6,020 | 91.1% |
| Caring | \$100 | \$200 | 100.0% |
| Communications/Publicity | \$3,500 | \$3,500 | 0.0% |
| UUA Contribution | \$9,950 | \$10,000 | 0.5% |
| Facilities | \$10,655 | \$12,805 | 20.2% |
| Green Sanctuary | \$100 | \$100 | 0.0% |
| Insurance | \$3,412 | \$3,500 | 2.6% |
| Leadership Development | \$2,000 | \$2,000 | 0.0% |
| Legal Fees | \$50 | \$50 | 0.0% |
| Membership | \$400 | \$425 | 6.3% |
| Minister's Discretionary Fund | \$300 | \$300 | 0.0% |
| Music | \$350 | \$350 | 0.0% |
| Payroll | \$127,284 | \$136,581 | 7.3% |
| Religious Education | \$1,960 | \$1,960 | 0.0% |
| Sitter | \$200 | \$200 | 0.0% |
| Social | \$700 | \$500 | -28.6% |
| Social Action | \$2,500 | \$2,500 | 0.0% |
| Stewardship | \$200 | \$200 | 0.0% |
| Sunday Services | \$1,500 | \$6,250 | 316.7% |
| Utilities | \$5,500 | \$4,900 | -10.9% |
| Total Expenses | \$173,811 | \$192,341 | 10.7% |

PROPOSED FY 2021/22 BUDGET AND PLEDGE DRIVE

Greetings from the Treasurer!

We are now in the middle of planning for next year. Part of that is preparing a budget before our Annual Meeting, having a pledge drive, and updating members about Grow Green ... Let me try to summarize as best I can.

BUDGET -- Our fiscal year runs from June 1 through May 31. My best estimate for our current year is that income will be \$160,096 and expenses \$176,833, giving a shortfall of \$16,737. Since we budgeted for a shortfall of \$22,311, this means we should end the year in a better position than anticipated. I hope to cover this in more detail at the Annual Meeting.

The proposed budget for FY 22/23 is shown [in the column at left]. This budget assumes Pastor Isabel has a 3/4-time appointment and that the staff and minister receive a 3% raise, which does not keep up with inflation. Currently, our endowments and operating funds total \$907,761.

PLEDGE DRIVE -- Chris Bailey is leading the pledge drive which will be much more active this year than in the past several years. [Small group meetings were held in March to discuss UUFM's budget for the coming year, and pledging opportunities. If you missed this opportunity but would like to take part in a group discussion, contact Chris at meadbailey@gmail.com.]

GROW GREEN -- [Grow Green](https://www.growgreenmanhattan.com/) is a way to help organizations develop an endowment. This year, the total amount of your donation will be passed directly to UUFM. The first \$1,000 of your donation will be matched with a 50% grant to our endowment at Greater Manhattan Community Foundation. The maximum matching grant to any one organization is \$10,000. This is an easy way for us to improve our finances.

Members who donate can tell the Treasurer whether they want their donation applied to their FY 21/22 pledge, their FY 22/23 pledge, or as an extra cash donation. Since most people specify Grow Green as an extra cash donation, we'll assume that is the case unless you contact us.

To donate by check, print the 2022 GROW Green Giving Form at www.growgreenmanhattan.com/, after April 1. If you want to donate online, that can only be done Friday, April 22, 2022, at the same web site.

Contact UUFM Treasurer Dan Swenson at 785 341-1973 or swenson.home@gmail.com, with questions about Fellowship finances and for help with your pledge.

BOARD OFFICER NOMINEES Executive Board candidates standing for election appear in **BOLD ITALICS**. Officers continuing their terms from the previous year appear in plain text:

Chair - Amy Betz
 Chair-Elect - **EMILY FRASER**
 Treasurer - **DAN SWENSON** (2nd, 2-year term)
 Secretary - Cathy Hedge
 Member-at-Large - Marisa Larson
 Member-at-Large - **RUDDY BENAVIDES**
 Past Chair - Judy Nickelson

**APPROVAL OF 2021 ANNUAL MTG MINUTES,
 AND SEPTEMBER 12, 2021, CONGREGATIONAL MTG MINUTES**

Voting members are asked to review these meeting minutes:

- <https://uufm.net/annualmtg2021minutes/>
- <https://uufm.net/congregationalmtg9-12-2021/>

UUFM COVENANT OF RIGHT RELATIONS AND CONFLICT RESOLUTION PROCESS

Reverend Thea Nietfeld comments on this newly adopted statement, developed through a series of open congregational meetings and approved by the UUFM Executive Board at the December 2009 meeting:

Healthy congregations are often supported by covenants and processes for inevitable conflict. A covenant links principles with behavior as a statement of aspirations. A conflict resolution process reduces anxiety with planned steps toward resolution.

UUFM members have been thinking together about what causes congregational stress and conflict and how we want to treat each other when we have issue disagreements. The results of these open conversations were adopted by the Board at its December 2009 meeting.

UUFM COVENANT OF RIGHT RELATIONS

- We value each person's worth and welcome people of all ages to participate in Fellowship life.
- We gather to support each other in our personal and community growth.
- Our congregational life provides opportunities to practice working together cooperatively and in friendship, keeping the greater good of the whole at heart. We approach each other with good will, allowing for mistakes and with an expectation that we will forgive each other.
- Recognizing that our different experiences and paths may lead to disagreement, we intend to practice respectful acceptance. Since we need to work together, we will patiently negotiate to reconcile conflicts and choose friendship over irreconcilable differences.
- Practicing right relations in our Fellowship encourages character growth and naturally extends caring qualities into other relationships.

UUFM CONFLICT RESOLUTION PROCESS

We encourage patient self-reflection in times of conflict for personal growth. Members are invited to apply reflection questions that are posted on the bulletin board. Individuals may choose to seek counseling from the minister.

- Members or groups in conflict are invited to first attempt to respectfully resolve issues with the original people or Committee involved.
- If it is not possible to respectfully solve the conflict among the original people/groups, they are encouraged to involve a mediator. Those involved could agree on and choose the minister, another member of the Fellowship, the Conflict Resolution Promoter or Team, a consultant from UUA, or a community mediator.
- The UUFM Board will be the final decision-maker for conflicts unresolved by mediation or where mediation is not useful. If the Board is involved, any leader may contact the MidAmerica District Office for assistance.
- This process will supplement rather than displace other congregational decision-making processes and structures.

REFLECTION QUESTIONS FOR THOSE IN CONFLICT

When conflict arises, each person is encouraged to consider the following before meeting with the person with whom they are in conflict:

1. What do I want my relationship with the Person to be like?
2. What attitudes and values do I want to honor when I'm with the Person?
3. What must I let go of to turn toward the Person?
4. What is the goodness in the Person that I will see and trust?
5. How will I show/tell the Person about the inherent goodness I see in him/her?
6. What will I dare to ask of the Person?

-- from Practicing Right Relationship, by Sellon and Smith

- † How willing am I to resolve this conflict?
- † Do I want this to work for both of us or only for myself?
- † What is the key issue or problem in this conflict?
- † What do I want to change--and how do I say so without blame or attack?
- † How well am I seeing the whole picture?
- † Am I using power inappropriately? Is the other person?
- † Am I judging the other person without hearing him or her?
- † What are my feelings? Am I blaming him or her for my feelings?
- † Have I told him or her how I feel?
- † What would it be like to take the other person's position--to walk in their shoes? What do I wish to accomplish specifically?
- † What can I give?
- † What points would I need to have covered if we made an agreement?
- † How can we all save face?
- † Can we manage this ourselves or do we need outside help?
- † What opportunities are present for our congregation in this conflict?
- † How will we acknowledge and celebrate our solution?

-- from UUA Vision, Mission, Covenant Workshop Resources

(uua.org/documents/congservices/visionmissioncovenant.pdf)

GREETING TEAMS

April 3: Elke Lorenz, Susan Gormely,
and Ed Olson
April 10: Lorn Clement, Lynn Ewanow,
and Livia Olsen
April 17: Mark Clarke, Anne Cowan,
and Marisa Larson
April 24: Jane Pelletier, Mary Beth Reese,
and Christopher Renner

Our coffee and greeting teams are springing back into action creating a warm and welcoming atmosphere on Sunday mornings. Learn more about coffee and greeting volunteers from Shirley Hobrock at 785 776-3175 or shirleyhobrock2@gmail.com.

BUILDING USE AND SCHEDULING

The UUFM building is now available to reserve, with limited group size, length of use, and the expectation that those using the building will practice reasonable social distancing and cleaning following use. Please contact Susan Turner to schedule your meeting space, at 785 537-2349 or office@uufm.net.

Administrator's Schedule

| | |
|-----------------|-----------------|
| Monday, April | 4 - 12 to 5 pm |
| Tuesday, April | 5 - 12 to 5 pm |
| Thursday, April | 7 - 12 to 5 pm |
| Monday, April | 11 - 12 to 5 pm |
| Tuesday, April | 12 - 12 to 5 pm |
| Thursday, April | 14 - 12 to 5 pm |
| Monday, April | 18 - 12 to 5 pm |
| Tuesday, April | 19 - 12 to 5 pm |
| Thursday, April | 21 - 12 to 5 pm |
| Monday, April | 25 - 12 to 5 pm |
| Tuesday, April | 26 - 12 to 5 pm |
| Thursday, April | 28 - 12 to 5 pm |

Drop in at the Fellowship during Susan Turner's office hours or call 785 537-2349. She may be reached at any time at office@uufm.net.

HELPFUL INFORMATION FOR MEMBERS AND FRIENDS

Contact Fellowship administrator Susan Turner at 785 537-2349 or office@uufm.net to **UPDATE YOUR MAILING ADDRESS, PHONE, or EMAIL**, or to **CANCEL YOUR SUBSCRIPTION** to this newsletter. You may also contact Susan to learn how to join our private **COFFEE AND CONVERSATIONS FACEBOOK** group.

If you are considering **BECOMING A MEMBER** of UUFM, learn more from our Welcoming chair Shirley Hobrock at shirleyhobrock@hotmail.com or 785 776-3175.

Fellowship members may receive **UU WORLD MAGAZINE**, without cost.

An audio version of *UU World* is available for those with vision or reading difficulties. To subscribe, contact Susan Turner at 785 537-2349 or office@uufm.net. Everyone can read *UU World* articles online at www.uuworld.org.

Join in discussions of interest; receive information on community events, and last-minute updates and announcements on our UUFM **EMAIL LIST**. Contact Susan Turner at office@uufm.net to subscribe.

Consider the convenience of **ELECTRONIC GIVING**. UUFM relies on the financial support of our congregation and automatic monthly contributions offer a simple and easy way to give on a regular basis. Learn more from Fellowship bookkeeper Sandy Nelson at 785 341-0135 or sandralounelson@yahoo.com. You can also make pledge payments, contribute to our General Operating fund, or give to our Helping Hands recipient directly, at uufm.net/donate. *Thank you!*

SUNDAY ANNOUNCEMENTS

Please contact fellowship administrator Susan Turner at 785 537-2349 or office@uufm.net, **NO LATER THAN WEDNESDAY EVENING** with announcements and information for inclusion in the Sunday morning order of service, and Sunday announcement slides.

CARING FOR MEMBERS AND FRIENDS

Providing support to one another is one of the most important things we do as religious community. Our Caring Team is ready to support you, or help you in supporting others. If you're sick and could use someone to do errands, or can use any kind of assistance or support, please let us know at 785 537-2349 or office@uufm.net.

MAY NEWSLETTER DEADLINE

The deadline for submissions to the May 2022 edition of *The UUFM Voice* is Friday, **APRIL 15**. Submissions received later may not be included in the newsletter. Send your newsletter contributions to Susan Turner at 785 537-2349 or office@uufm.net. *If you cannot get your submission in by the April 15 deadline, please contact Susan to arrange a deadline extension.*



APRIL 2022 at UUFM

Sunday

Monday

Tuesday

Wednesday

Thursday

Friday

Saturday



3

10:45 AM SUNDAY SERVICE
Strenuous Contours of Enough
Pastor Isabel Call

4

12 TO 5 PM
SUSAN TURNER
at Fellowship, 537-2349

5

12 TO 5 PM
SUSAN TURNER
3:30 TO 4:30 PM
SANDY NELSON
at Fellowship, 537-2349

6

12 NOON
LUUNCH BUUNCH
Kathleen Oldfather
kioldfather@gmail.com

7

9:30 AM
UU COFFEE GROUP
mjanepelletier@gmail.com
12 TO 5 PM
SUSAN TURNER
3:30 TO 4:30 PM
SANDY NELSON
at Fellowship, 537-2349

8

7 AM HAPPY KITCHEN breakfast
St Paul's Episcopal Church

9

10

10:45 AM SUNDAY SERVICE
Waking Up, Showing Up
Pastor Isabel Call
1 PM ANNUAL MEETING
ZOOM ONLY
tinyurl.com/AnnualMtg2022

11

12 TO 5 PM
SUSAN TURNER
at Fellowship, 537-2349

12

12 TO 5 PM S TURNER
3:30 TO 4:30 PM S NELSON
at Fellowship, 537-2349
7 PM BOARD MEETING
Judy Nickelson
judynickelson@gmail.com

13

12 NOON
LUUNCH BUUNCH
Kathleen Oldfather
kioldfather@gmail.com
6 PM ACTION
WEDNESDAY on Zoom
<https://tinyurl.com/AWedUUFM>

14

9:30 AM
UU COFFEE GROUP
mjanepelletier@gmail.com
12 TO 5 PM
SUSAN TURNER
3:30 TO 4:30 PM
SANDY NELSON
at Fellowship, 537-2349

15

7 AM HAPPY KITCHEN breakfast
St Paul's Episcopal Church

last minute
NEWSLETTER DEADLINE

16

17

10:45 AM SUNDAY SERVICE
Alive Again, Today
Pastor Isabel Call
12:15 PM EASTER POTLUCK
at the Fellowship
Sandy Nelson, dre@uufm.net
4 PM RACIAL JUSTICE MTG
on Zoom, pastor@uufm.net

18

12 TO 5 PM
SUSAN TURNER
at Fellowship, 537-2349

19

12 TO 5 PM
SUSAN TURNER
3:30 TO 4:30 PM
SANDY NELSON
at Fellowship, 537-2349

20

12 NOON
LUUNCH BUUNCH
Kathleen Oldfather
kioldfather@gmail.com

21

9:30 AM
UU COFFEE GROUP
mjanepelletier@gmail.com
12 TO 5 PM
SUSAN TURNER
3:30 TO 4:30 PM
SANDY NELSON
at Fellowship, 537-2349

22

7 AM HAPPY KITCHEN breakfast
St Paul's Episcopal Church

23

11:30 AM TO 4 PM
LITTLE APPLE PRIDE
FESTIVAL AND PARADE
Manhattan City Park
Marisa Larson
marisa.larson@gmail.com

24

10:45 AM SUNDAY SERVICE
Awakening
Mary Pinard

25

12 TO 5 PM
SUSAN TURNER
at Fellowship, 537-2349

26

12 TO 5 PM
SUSAN TURNER
3:30 TO 4:30 PM
SANDY NELSON
at Fellowship, 537-2349

27

12 NOON
LUUNCH BUUNCH
Kathleen Oldfather
kioldfather@gmail.com

28

9:30 AM
UU COFFEE GROUP
Jane Pelletier
mjanepelletier@gmail.com
12 TO 5 PM
SUSAN TURNER
3:30 TO 4:30 PM
SANDY NELSON
at Fellowship, 537-2349

29

7 AM HAPPY KITCHEN breakfast
St Paul's Episcopal Church
10 AM BOOK DISCUSSION
Susan Adamchak
sadamchak@kansas.net

30

5 TO 8 PM
FIREFLY OPEN CIRCLE
Black Moon clearing ritual
Fellowship fire circle, Mandy Ryan
sparkofdrakaina@yahoo.com